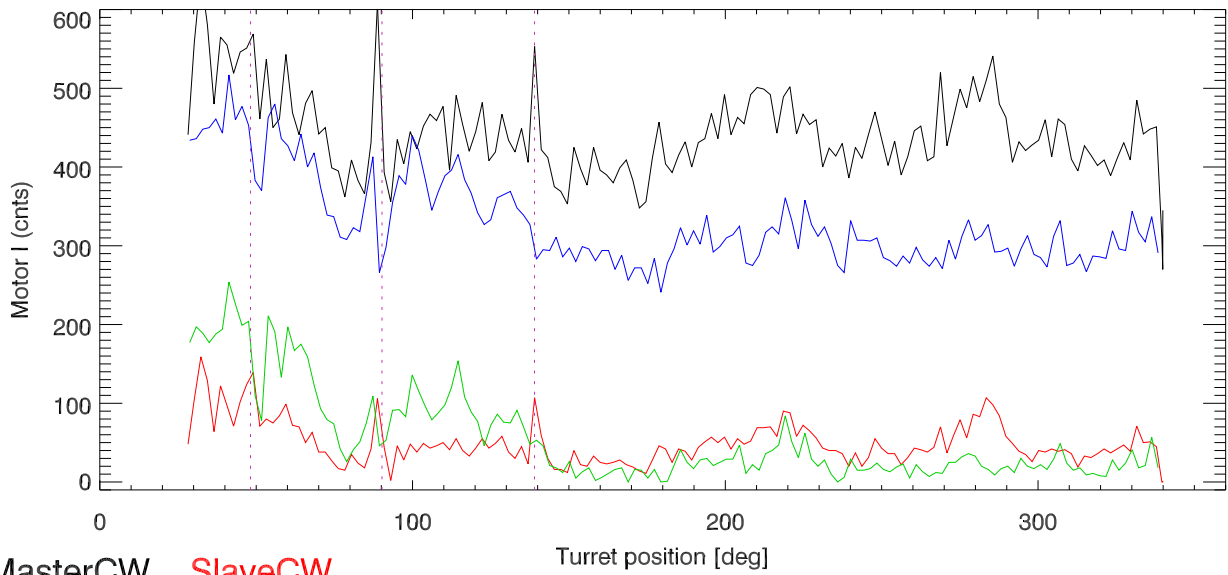
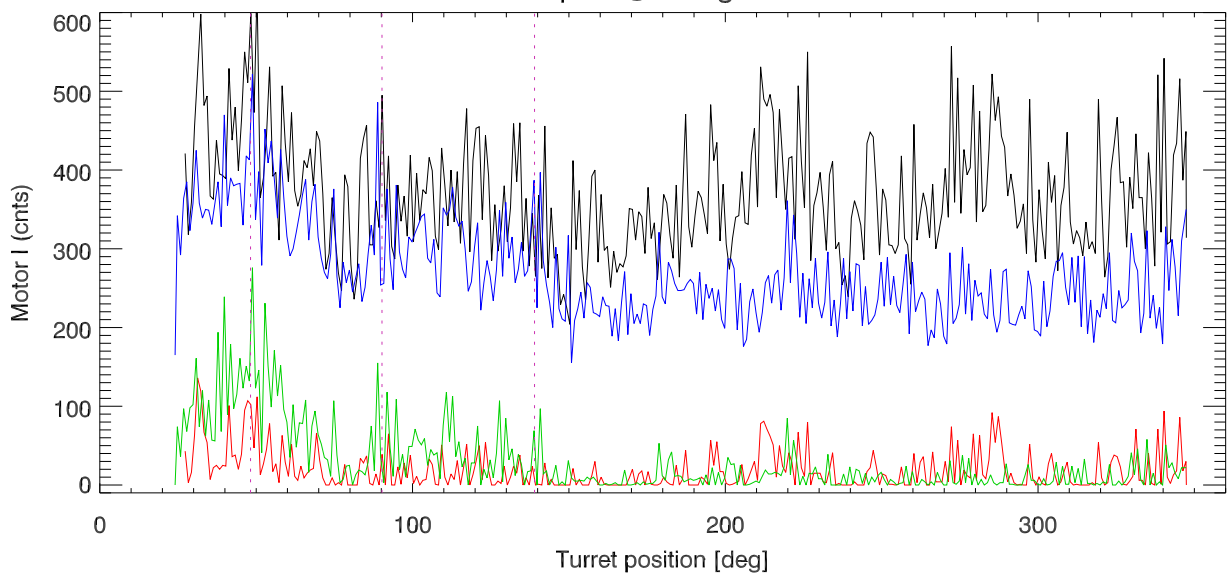


03may11 turrent motor currents for CW,CCW spins @ 3 deg/sec

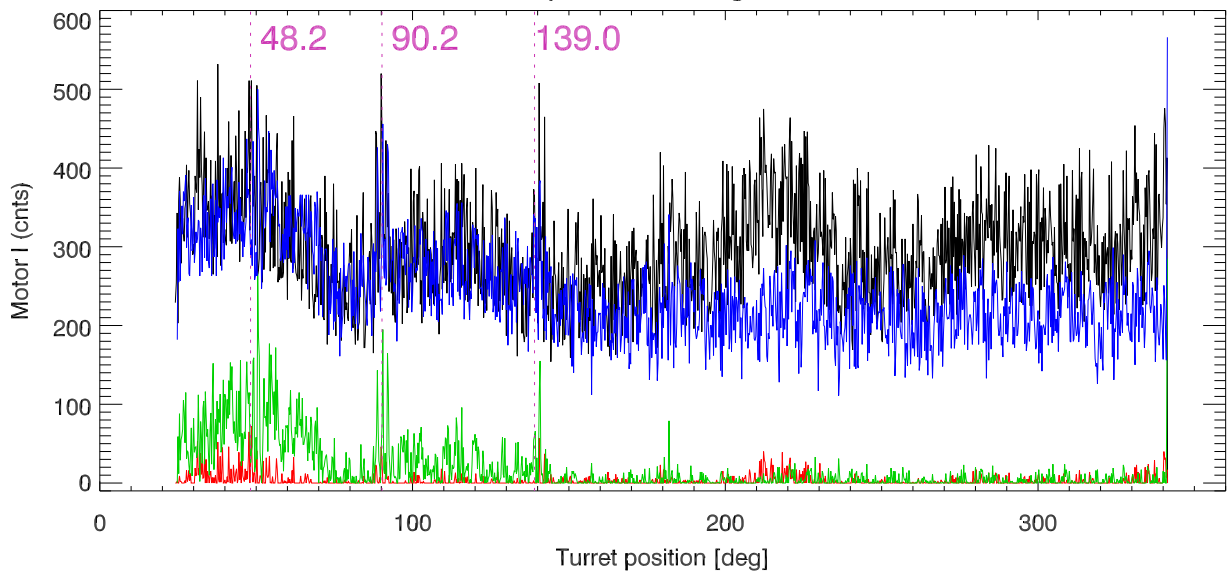


MasterCW SlaveCW
MasterCCW SlaveCCW

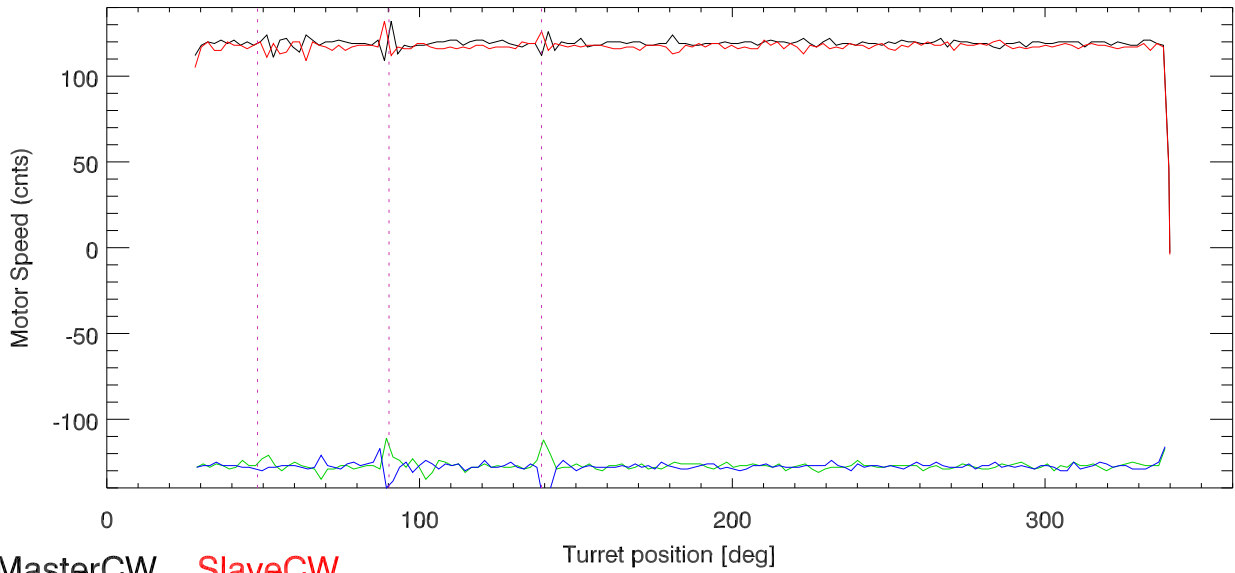
spins @ 1 deg/sec



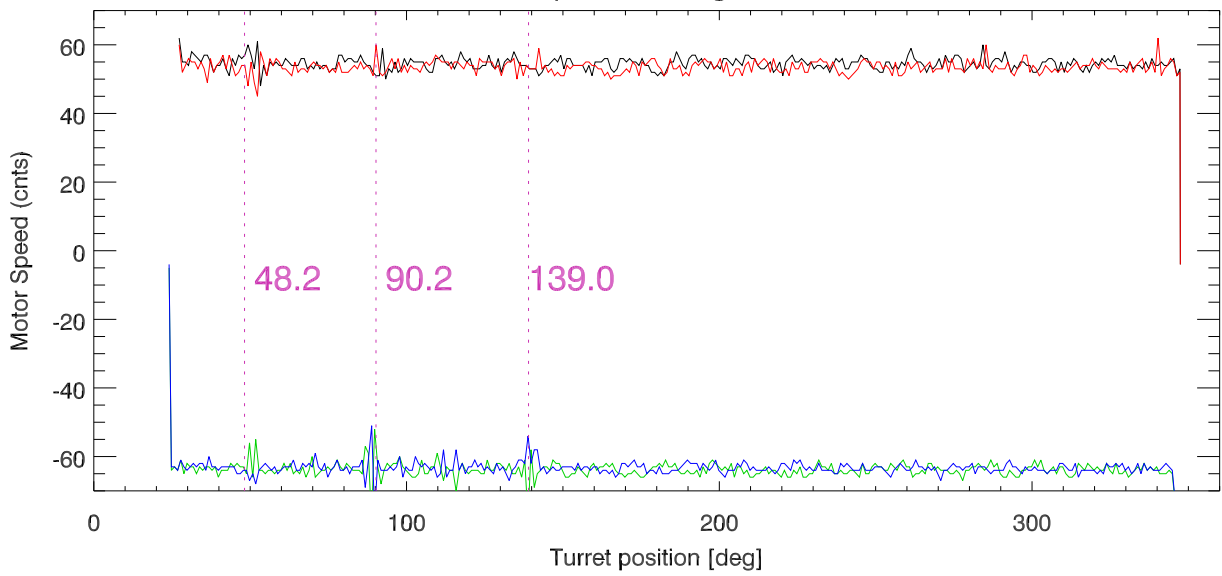
spins @ .25 deg/sec



03may11 turrent motor speed for CW,CCW spins @ 3 deg/sec



spins @ 1 deg/sec



spins @ .25 deg/sec

