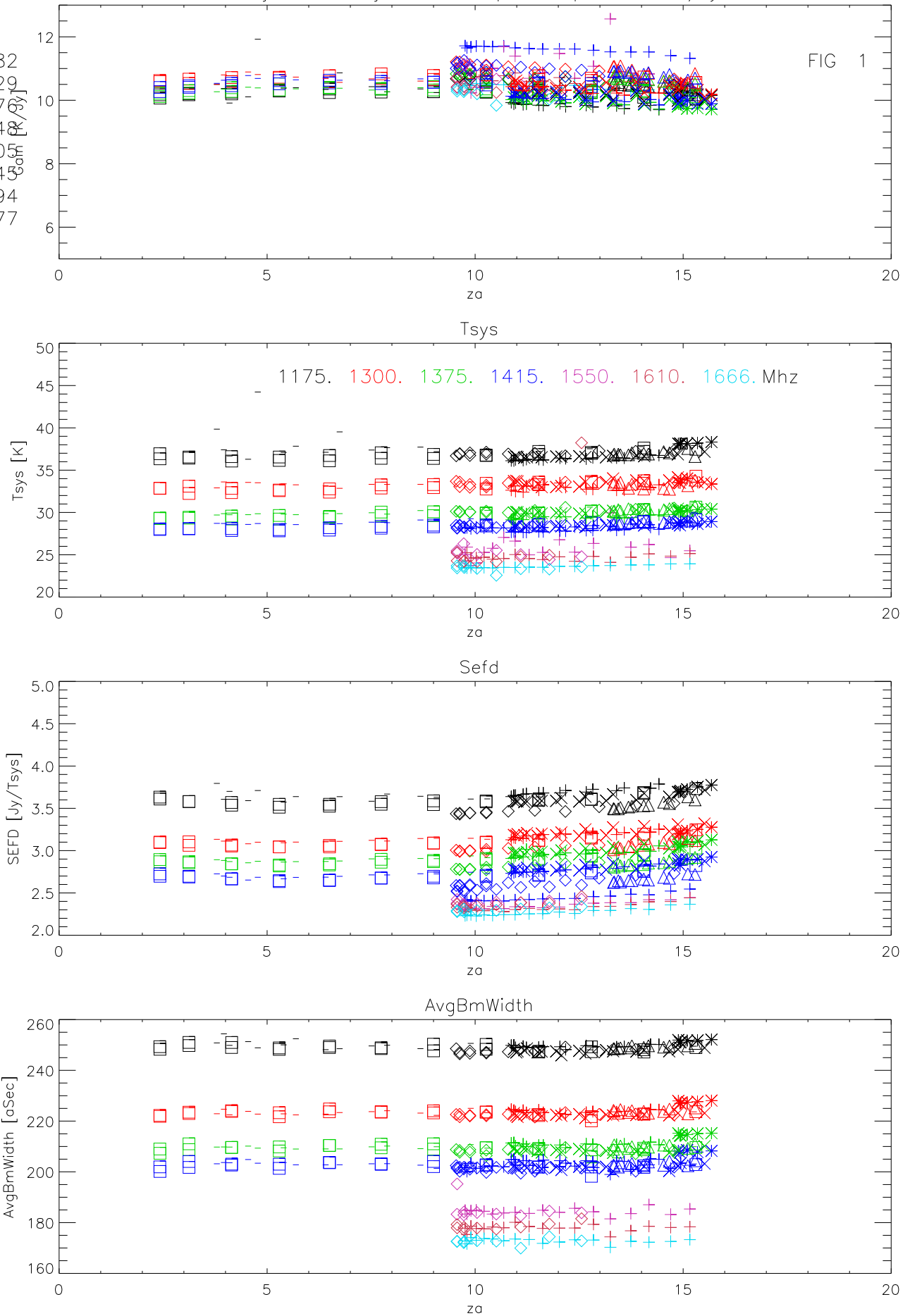


01jan11 to 31jan11 all freq 536 pnts. Gain K/Jy

FIG 1

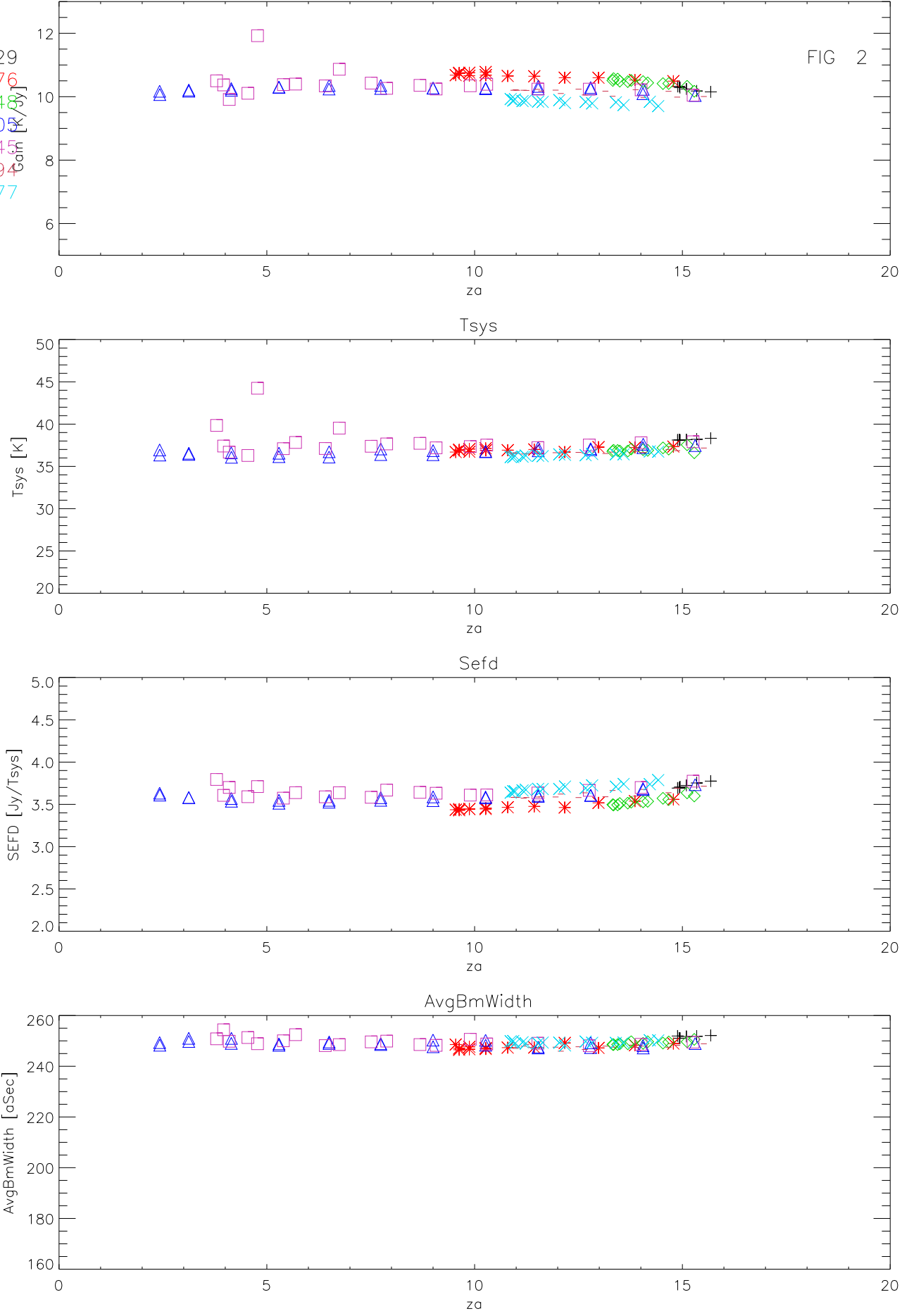
- + B0116+082
- \* B0134+320
- ◇ B0221+270
- △ B0340+040
- B0428+200
- B0618+145
- × B0824+294
- + B1005+077



01jan11 to 31jan11 1175 Mhz 107 pnts. Gain K/Jy

FIG 2

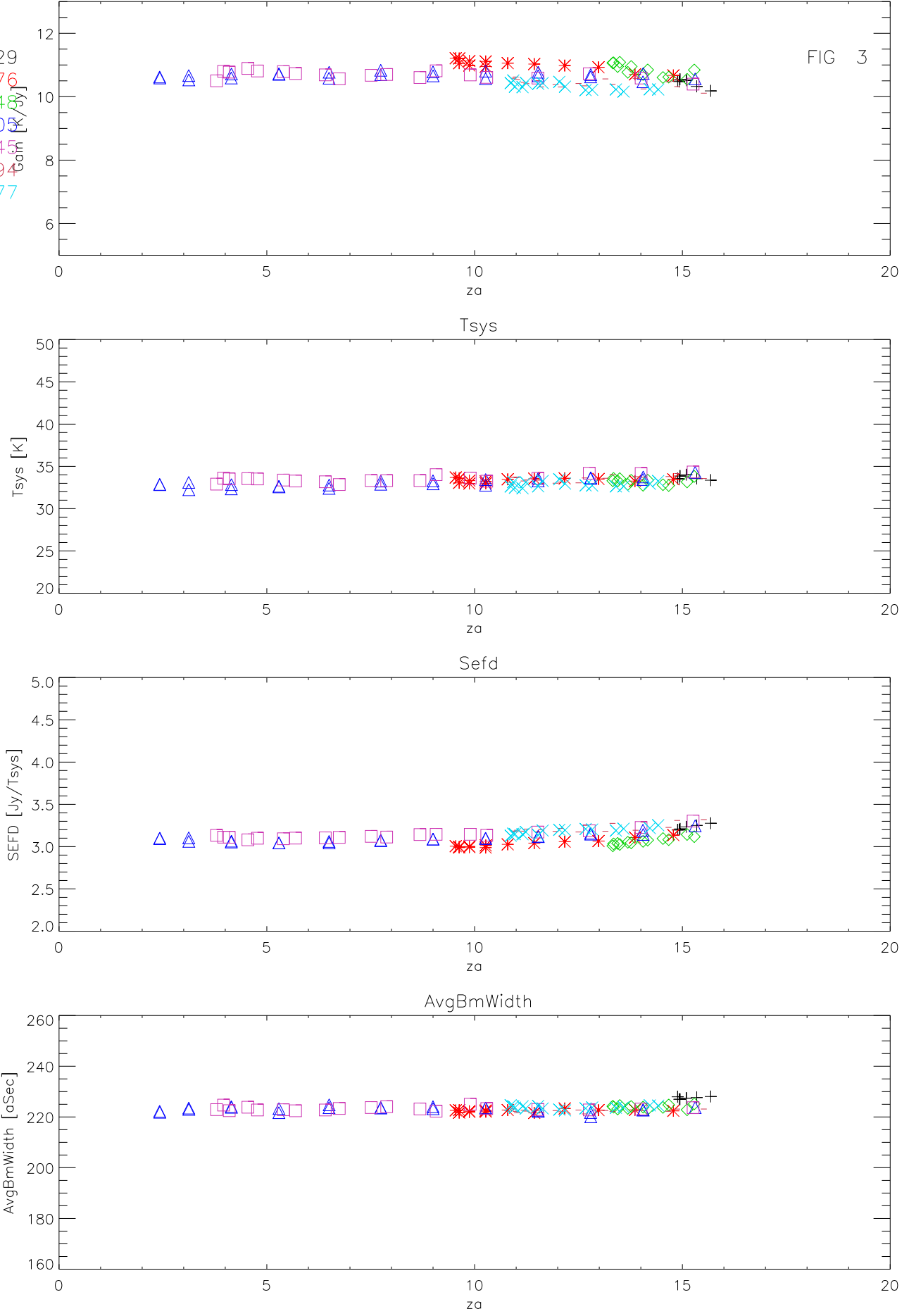
- + B0134+329
- \* B0221+276
- ◇ B0340+049
- △ B0428+206
- B0618+145
- B0824+294
- × B1005+077



01jan11 to 31jan11 1300 Mhz 107 pnts. Gain K/Jy

FIG 3

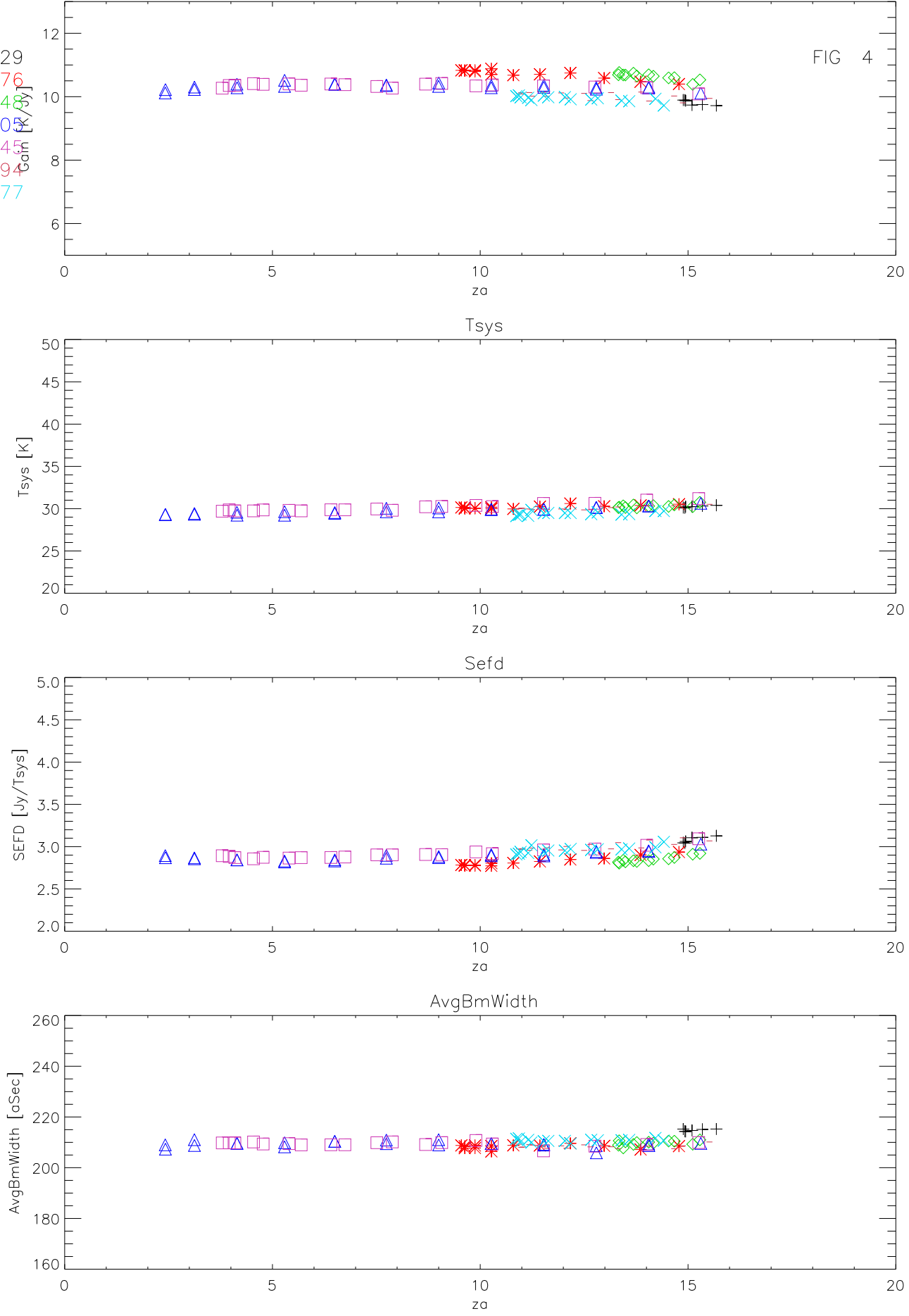
- + B0134+329
- \* B0221+276
- ◇ B0340+049
- △ B0428+206
- B0618+145
- B0824+294
- × B1005+077



01jan11 to 31jan11 1375 Mhz 107 pnts. Gain K/Jy

FIG 4

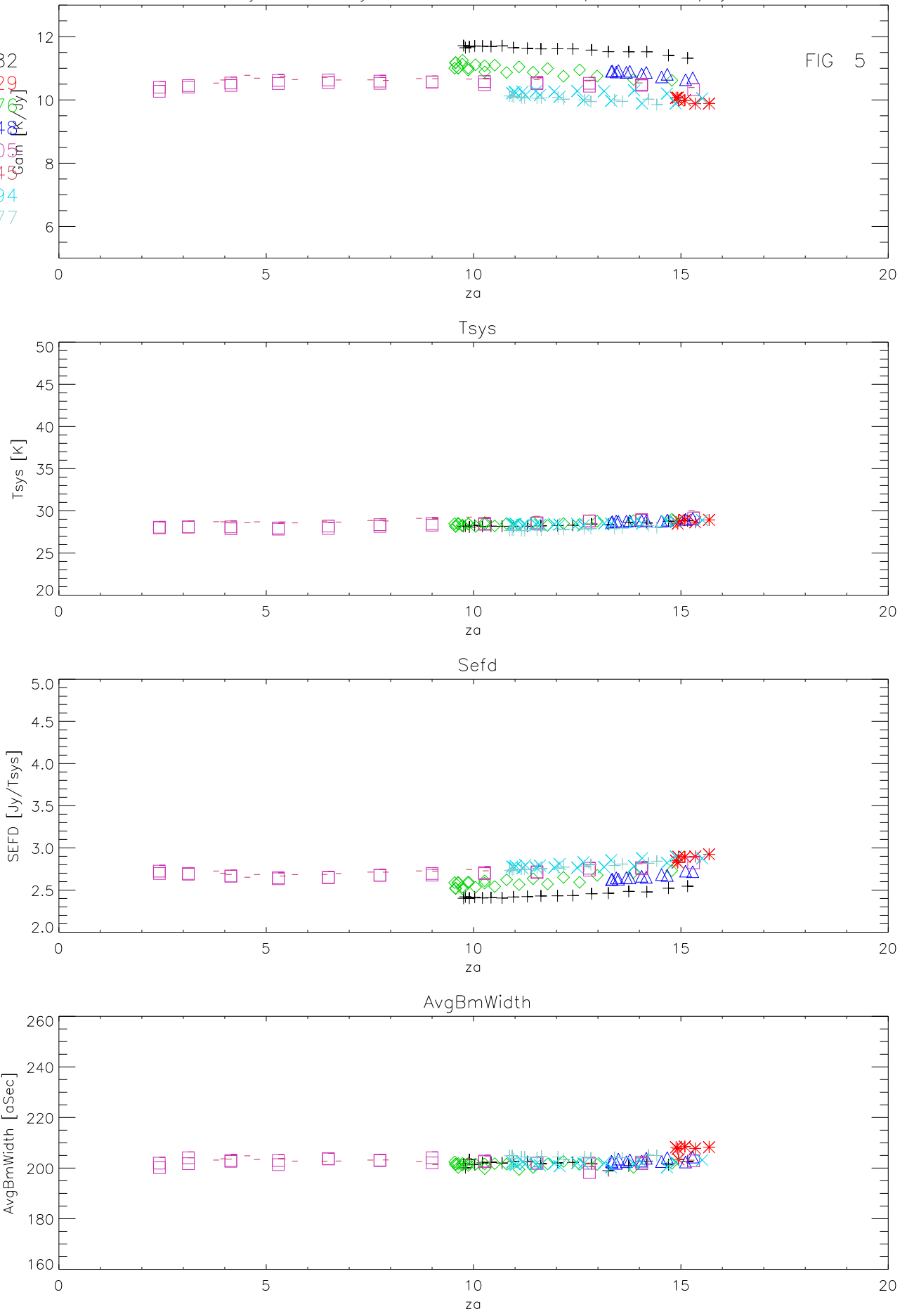
- + B0134+329
- \* B0221+276
- ◇ B0340+049
- △ B0428+207
- B0618+145
- B0824+294
- × B1005+077



01jan11 to 31jan11 1415 Mhz 134 pnts. Gain K/Jy

FIG 5

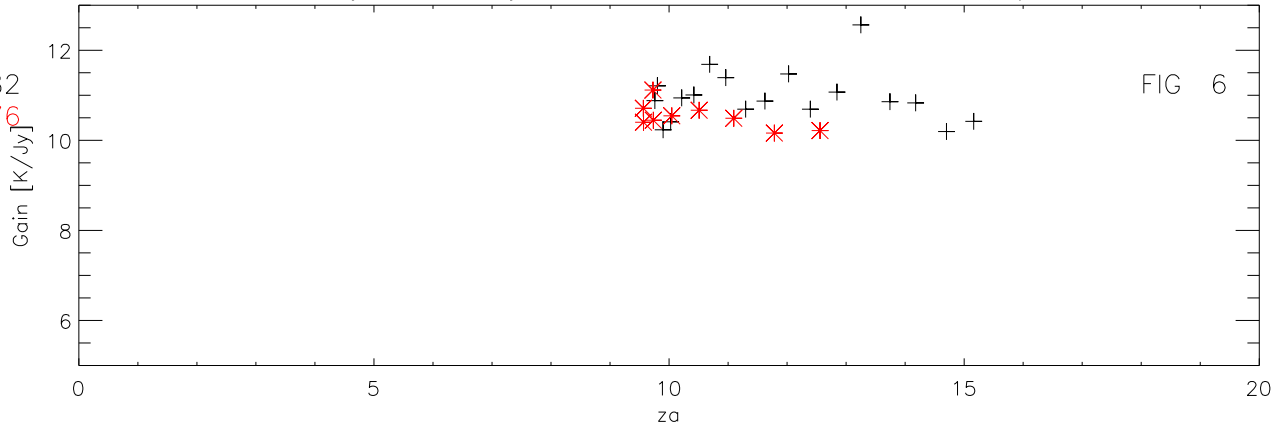
- + B0116+082
- \* B0134+329
- ◇ B0221+270
- △ B0340+048
- B0428+205
- B0618+145
- × B0824+294
- + B1005+077



01jan11 to 31jan11 1550 Mhz 27 pnts. Gain K/Jy

+ B0116+082  
\* B0221+276

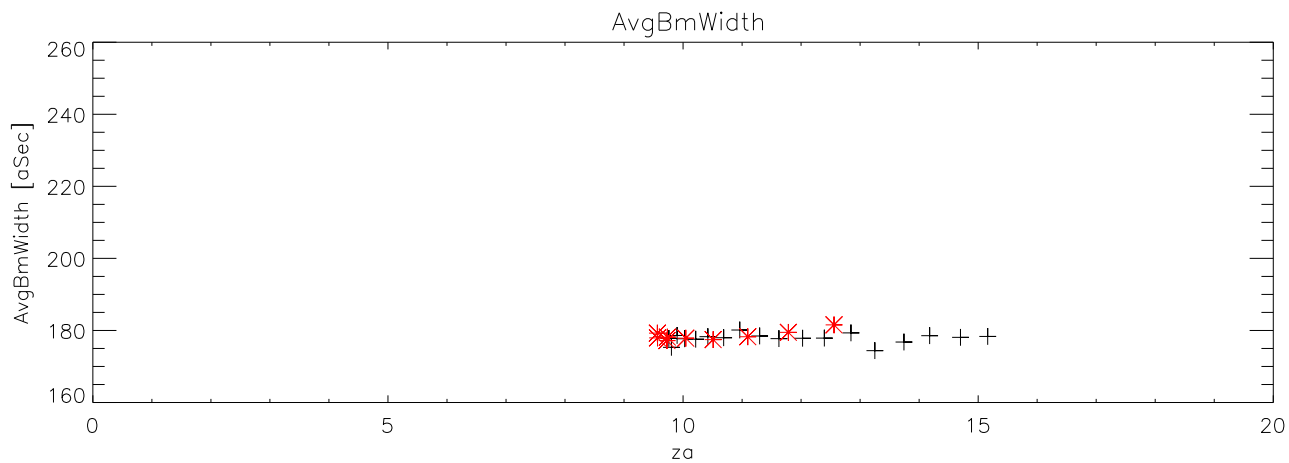
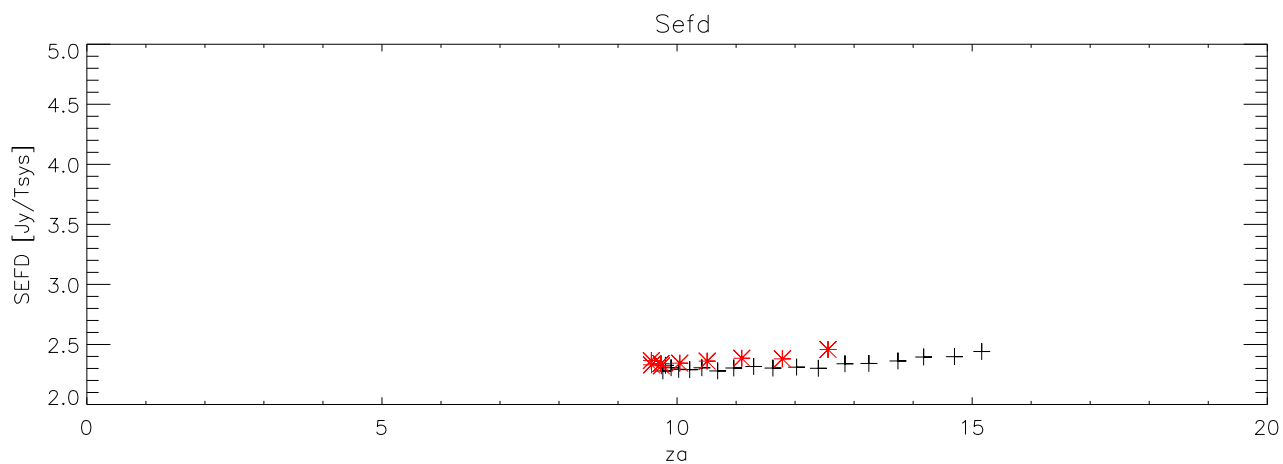
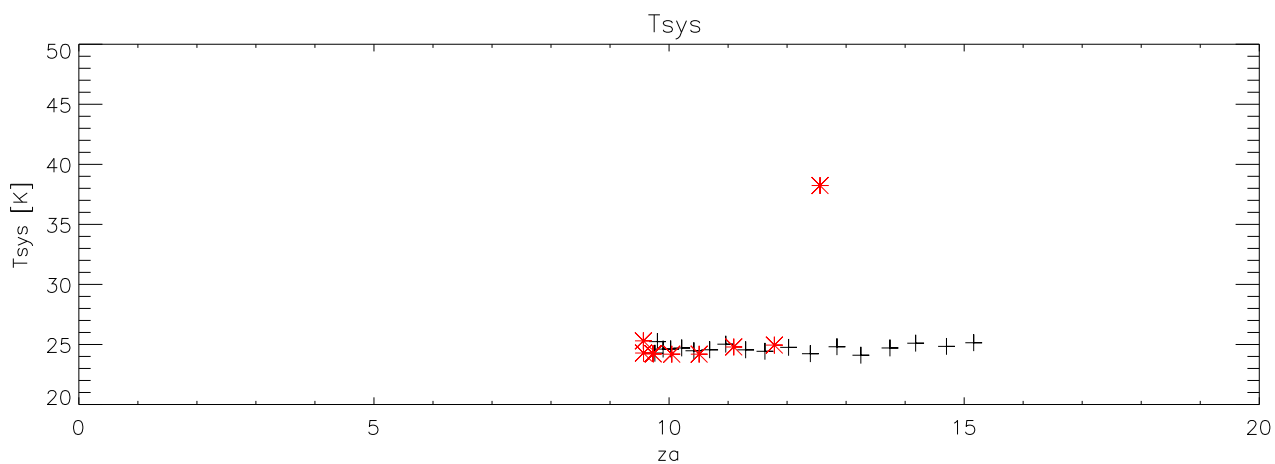
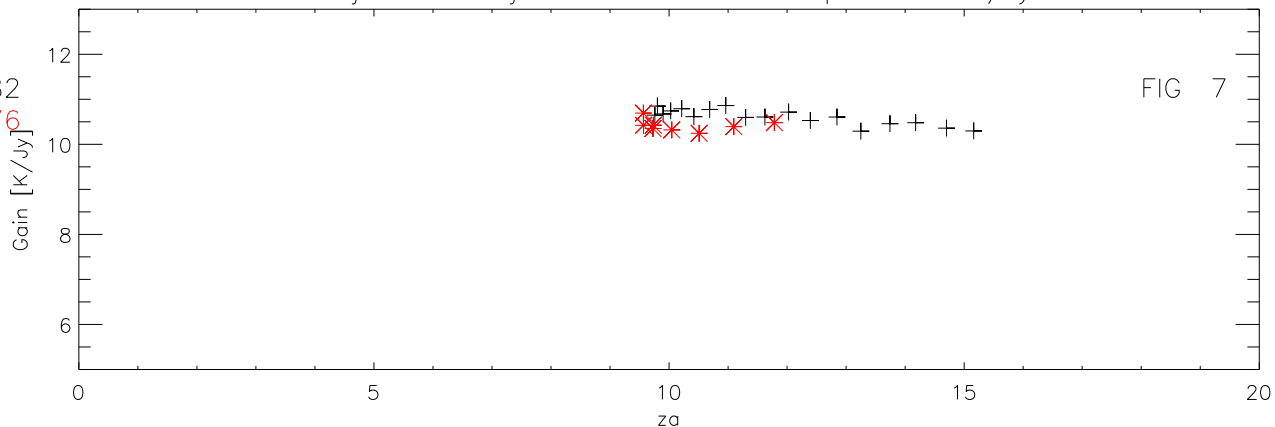
FIG 6



01jan11 to 31jan11 1610 Mhz 27 pnts. Gain K/Jy

FIG 7

+ B0116+082  
\* B0221+276



01jan11 to 31jan11 1666 Mhz 27 pnts. Gain K/Jy

FIG 8

+ B0116+082  
\* B0221+276

