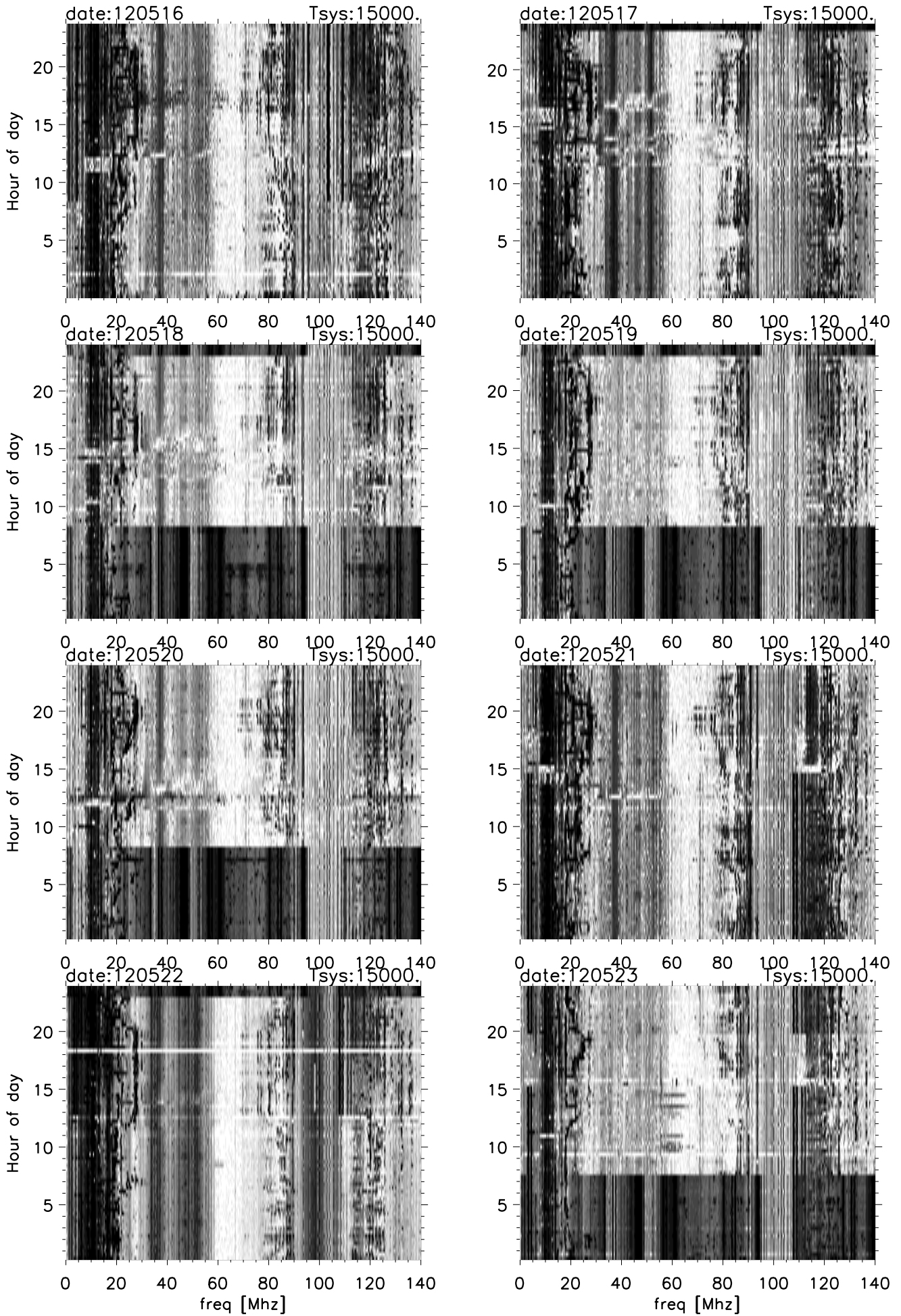
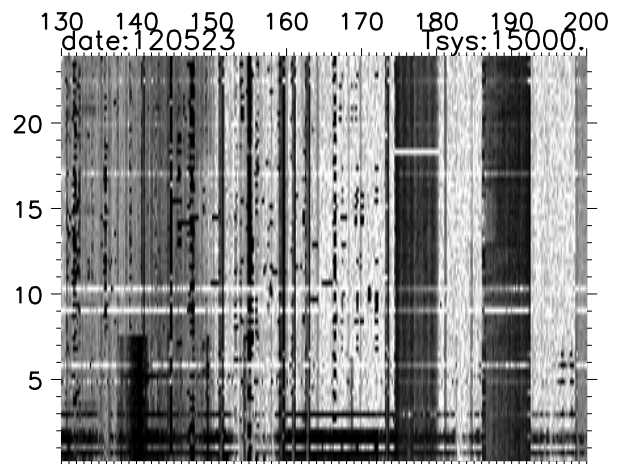
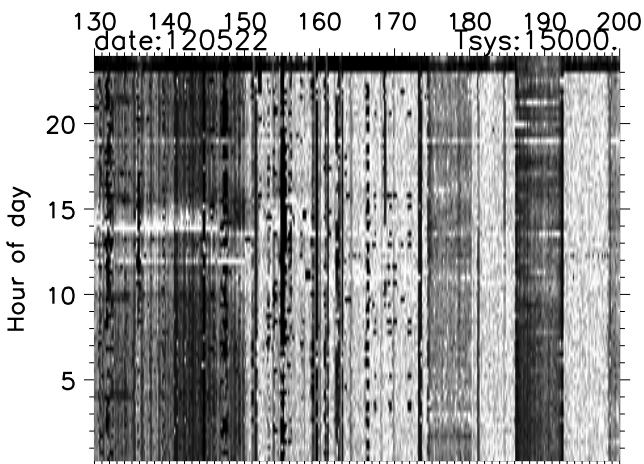
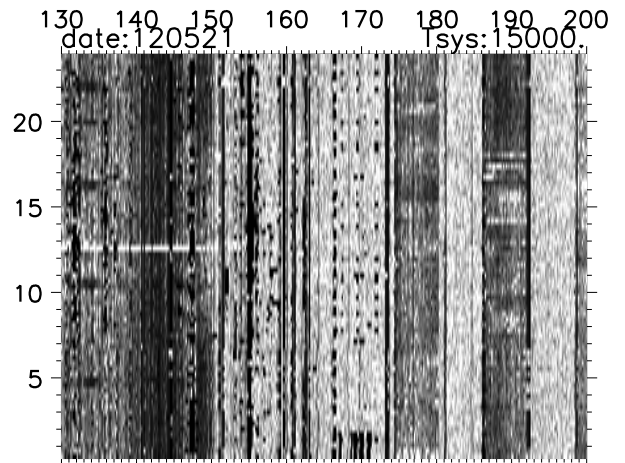
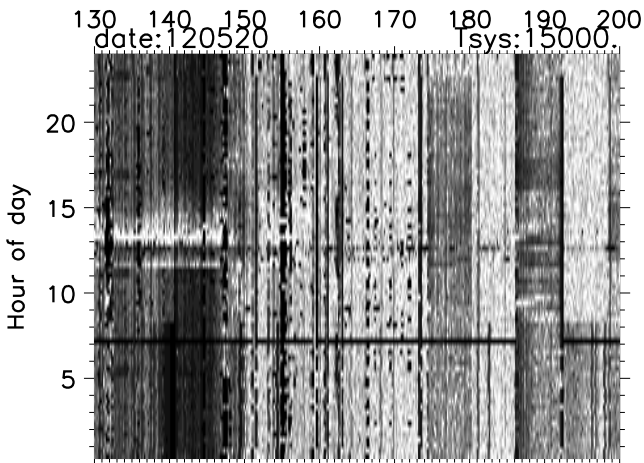
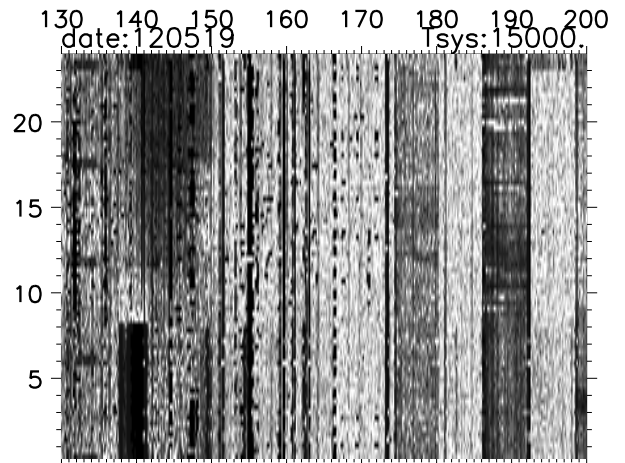
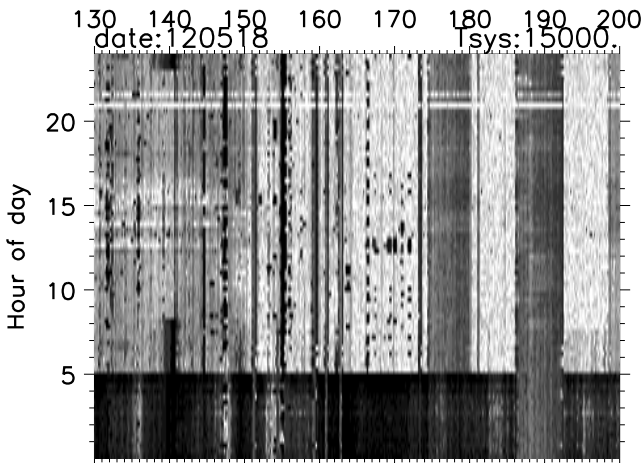
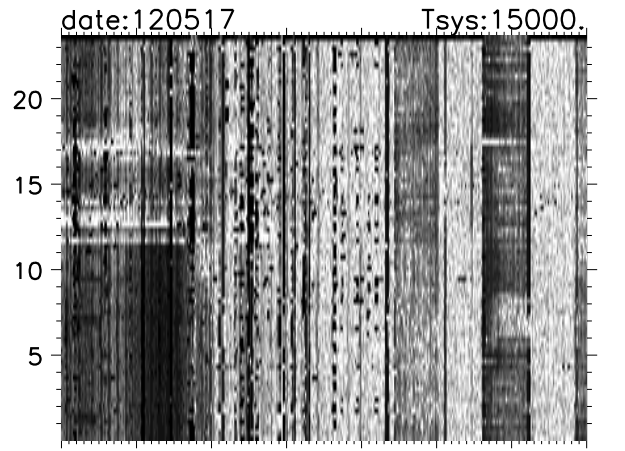
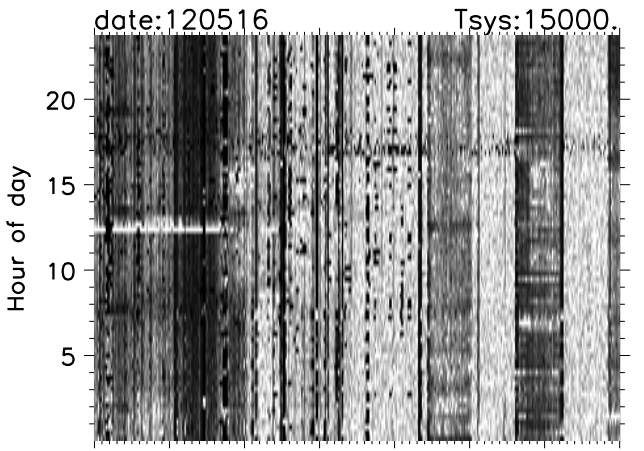


# Arecibo Obs hilltop monitor rfi time vs Freq images



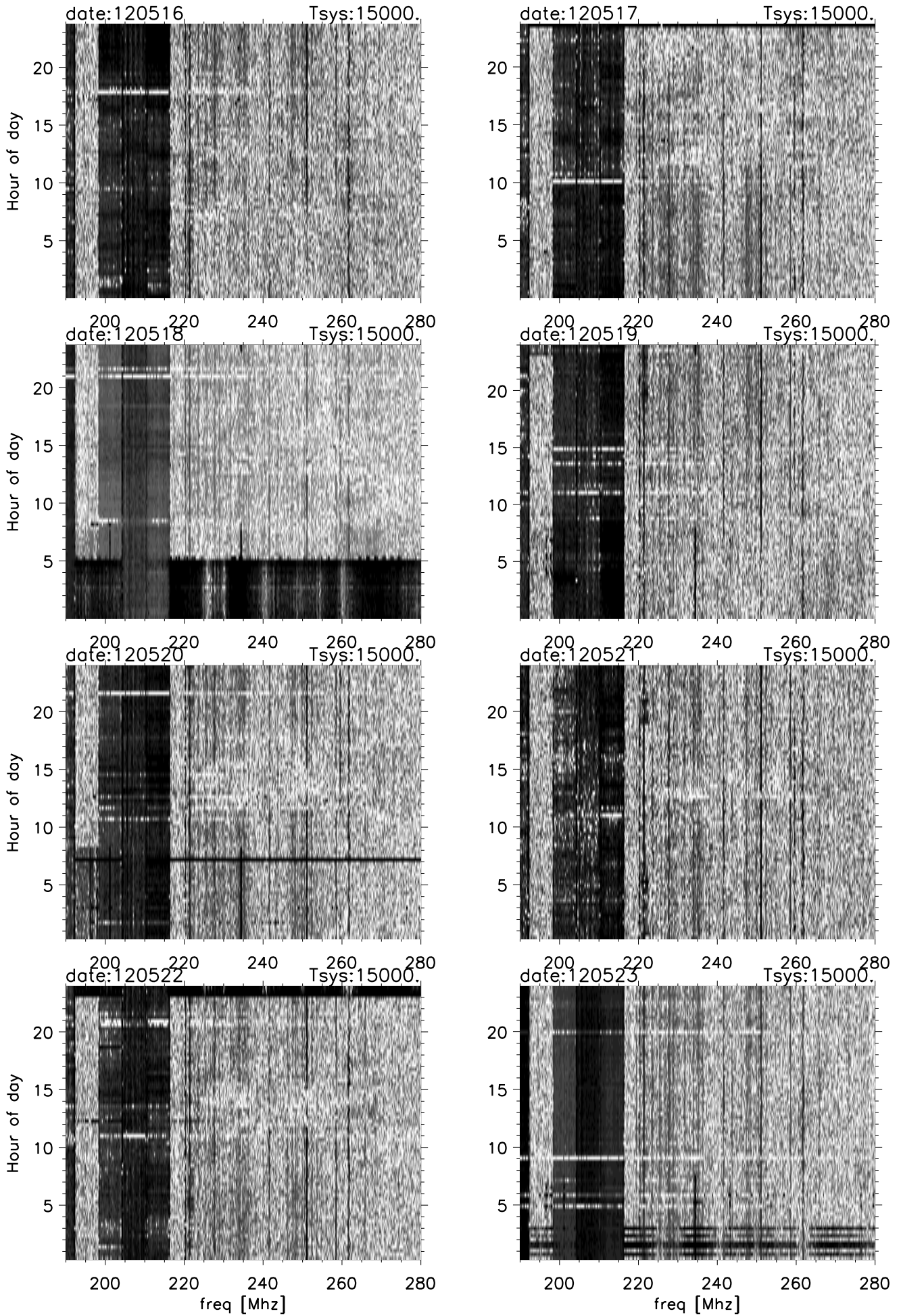
# Arecibo Obs hilltop monitor rfi time vs Freq images



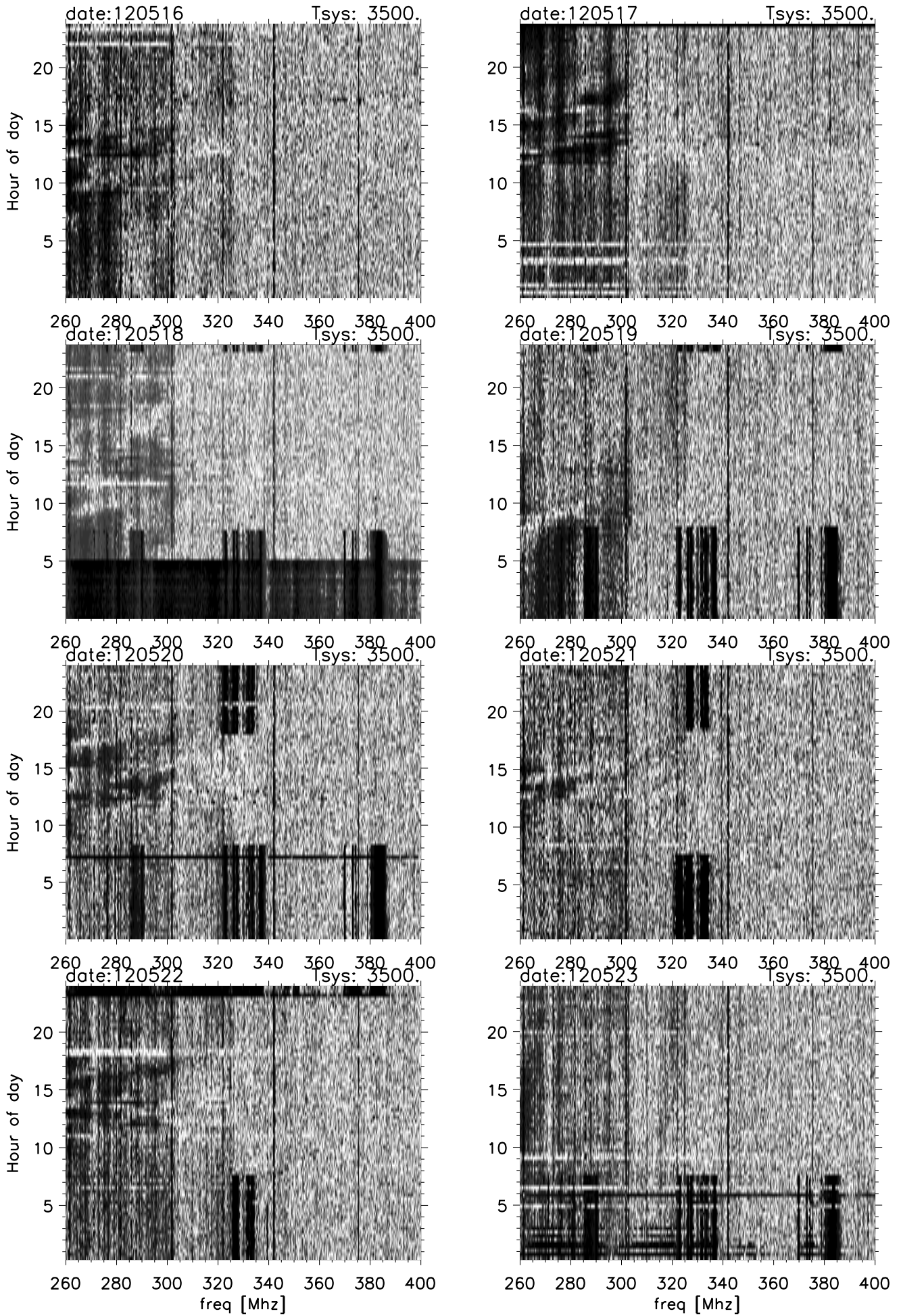
130 140 150 160 170 180 190 200  
freq [Mhz]

130 140 150 160 170 180 190 200  
freq [Mhz]

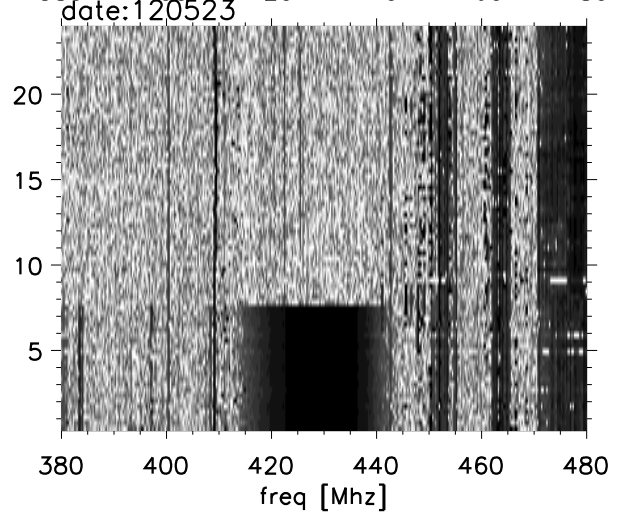
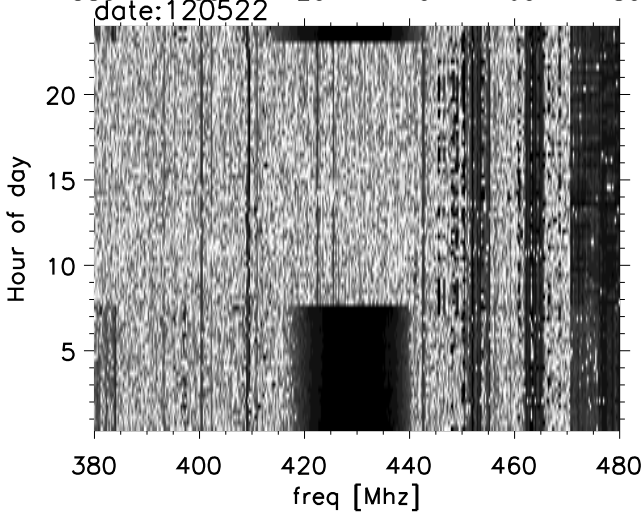
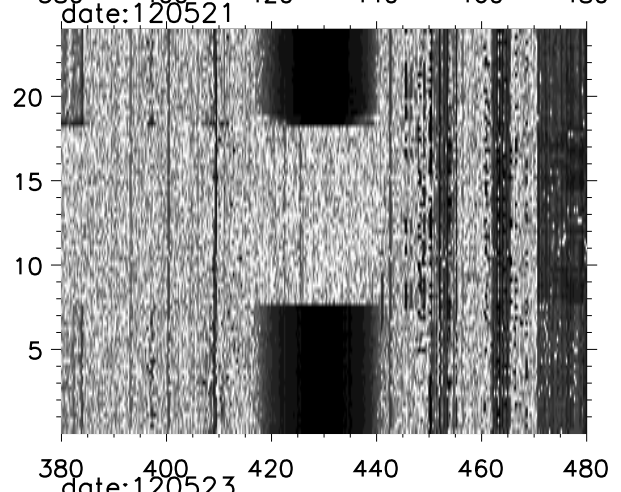
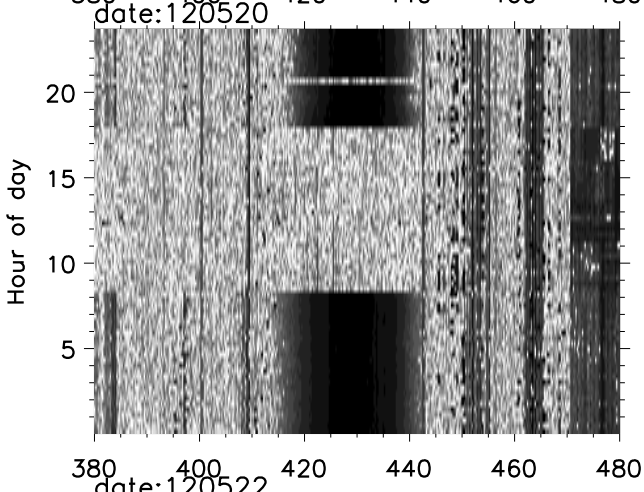
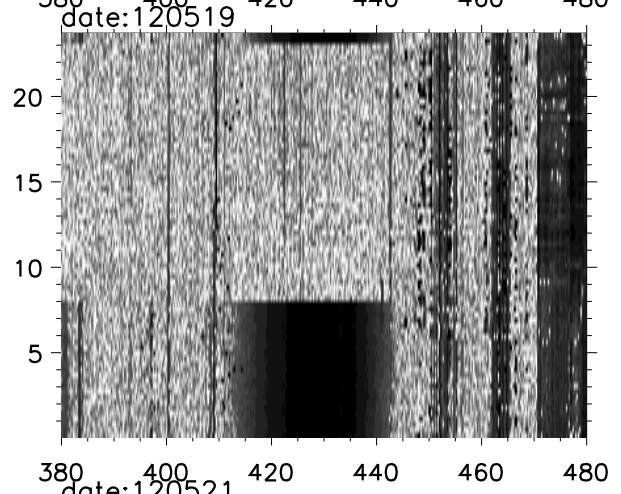
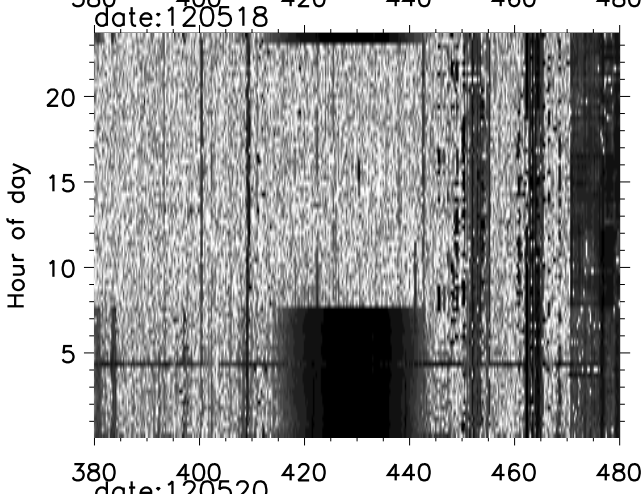
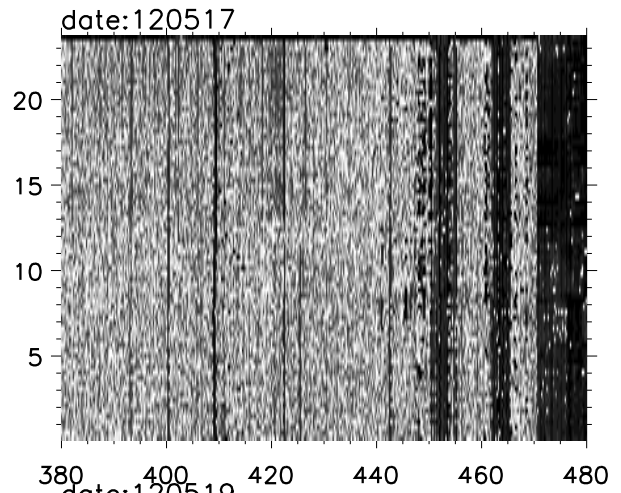
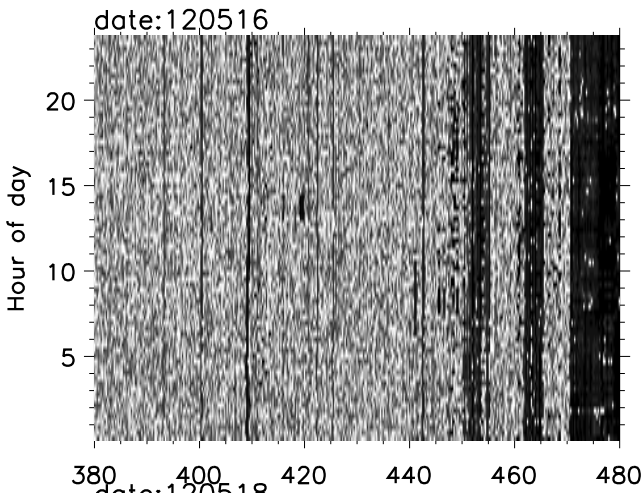
# Arecibo Obs hilltop monitor rfi time vs Freq images



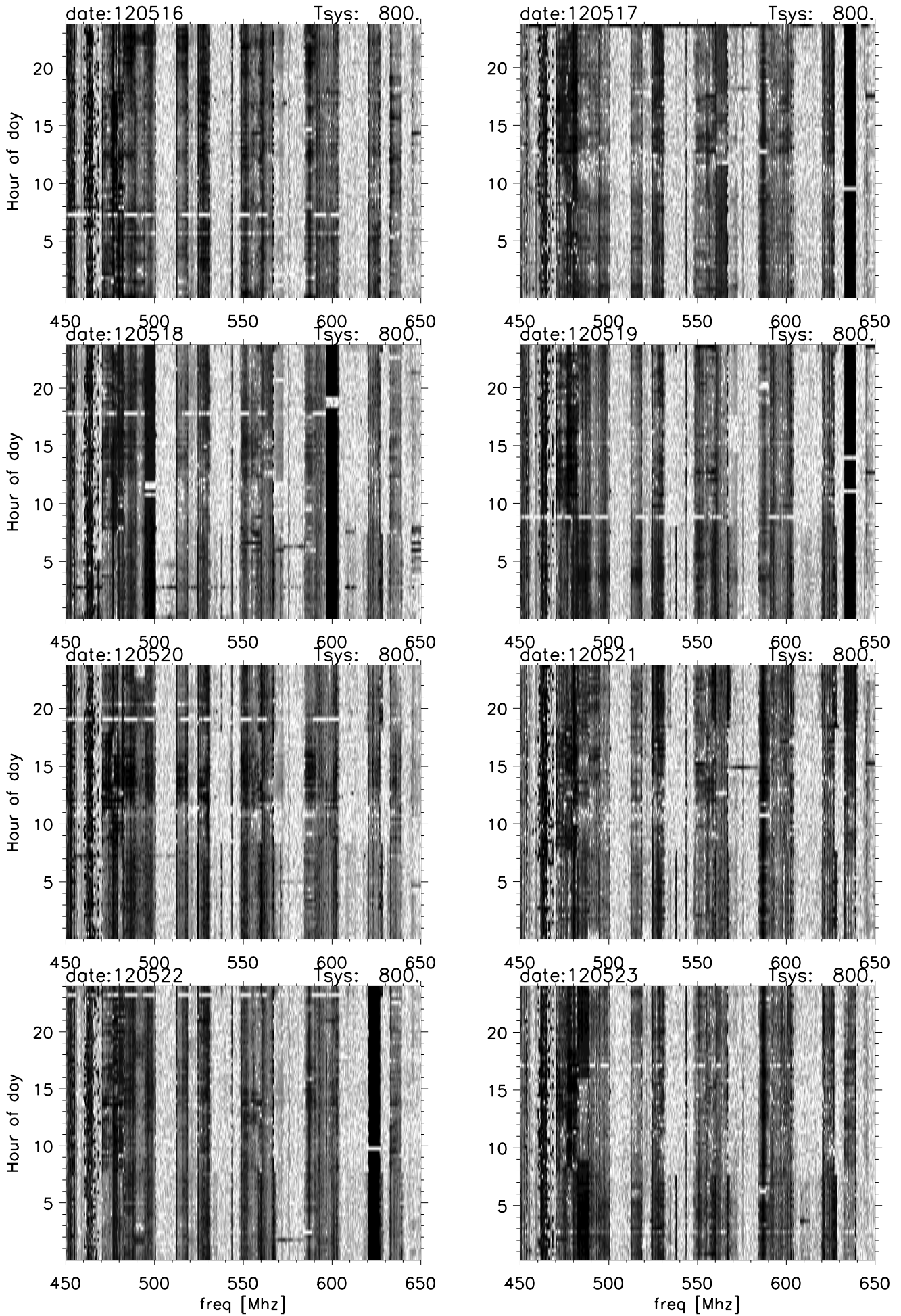
# Arecibo Obs hilltop monitor rfi time vs Freq images



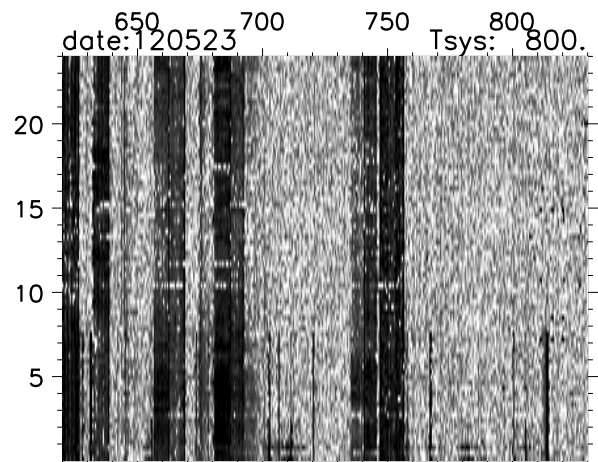
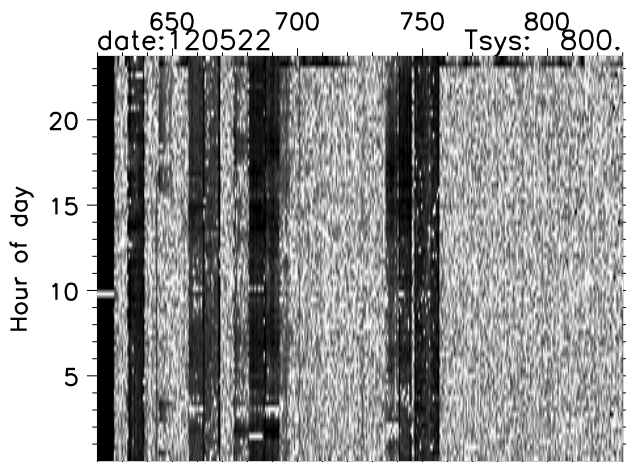
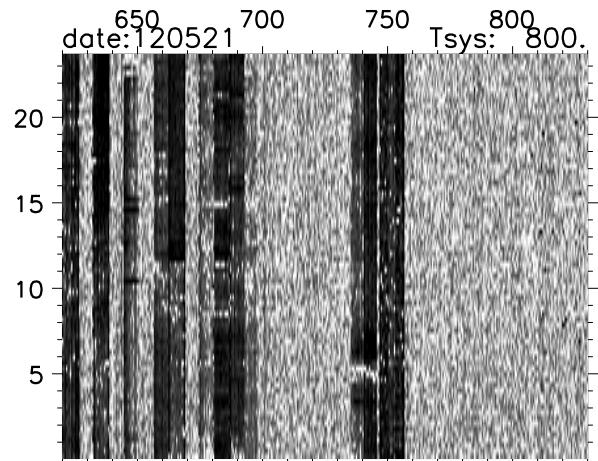
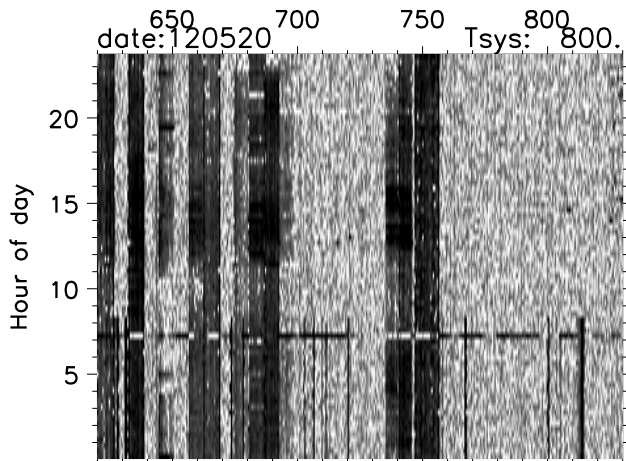
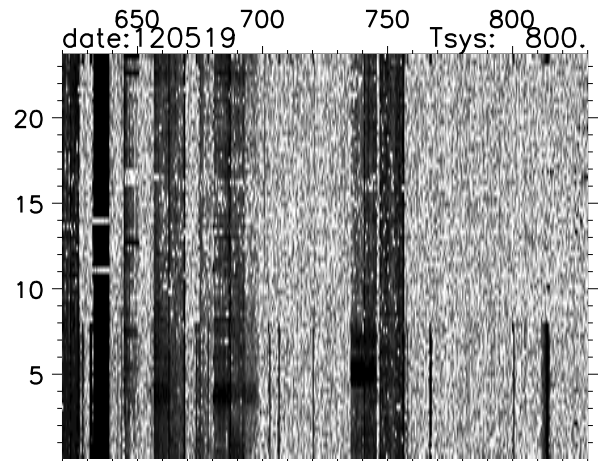
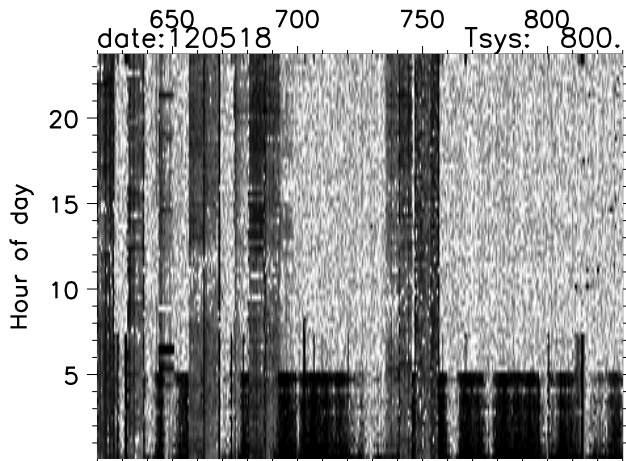
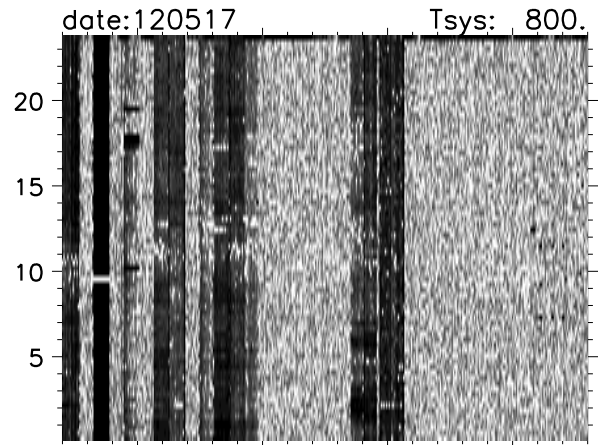
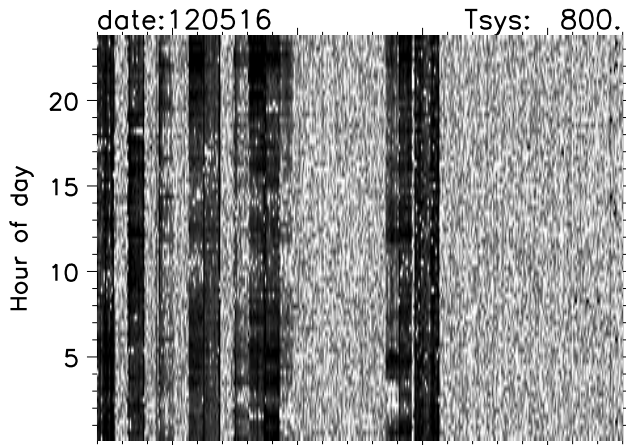
# Arecibo Obs hilltop monitor rfi time vs Freq images



# Arecibo Obs hilltop monitor rfi time vs Freq images



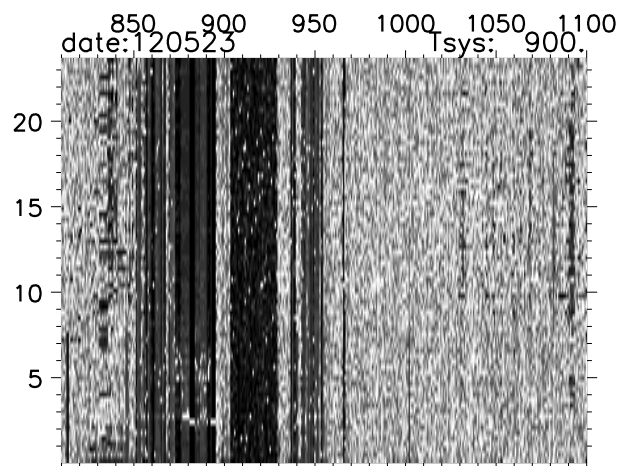
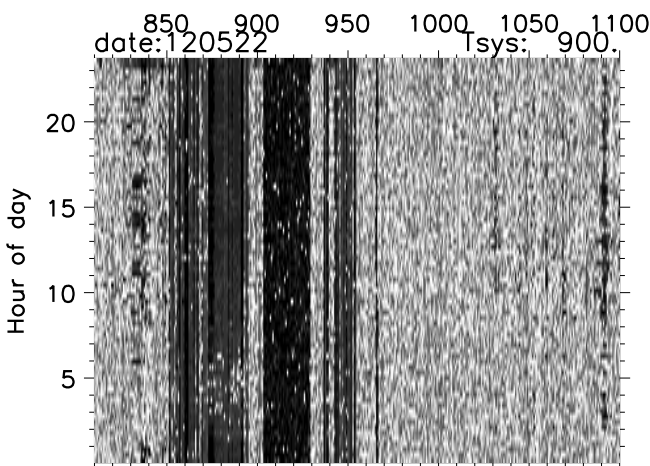
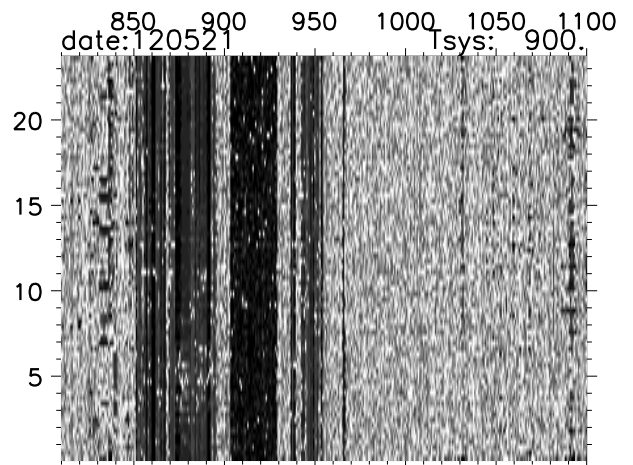
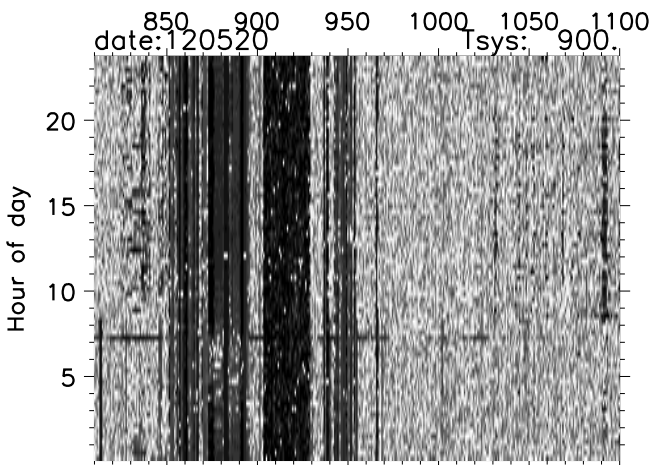
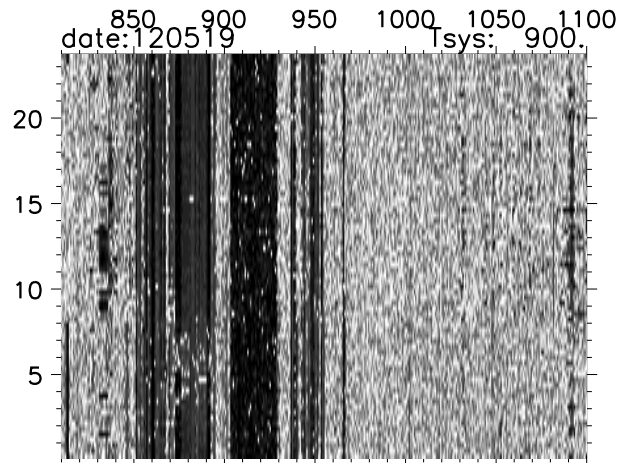
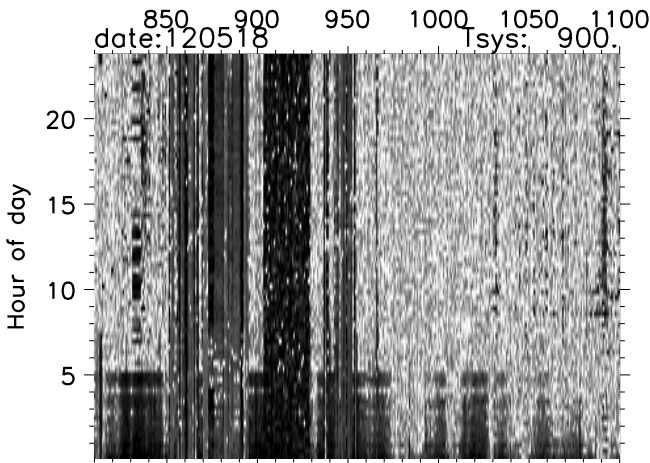
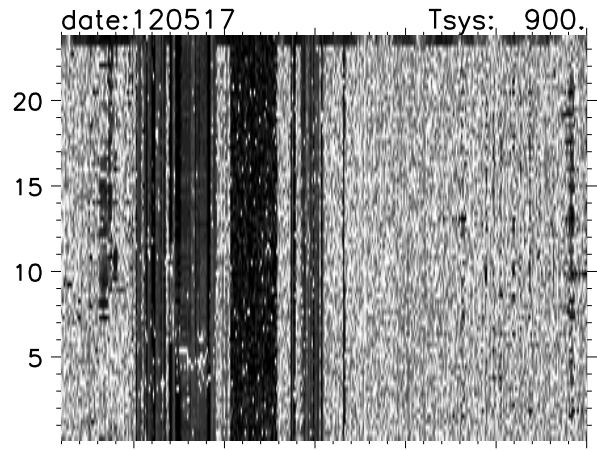
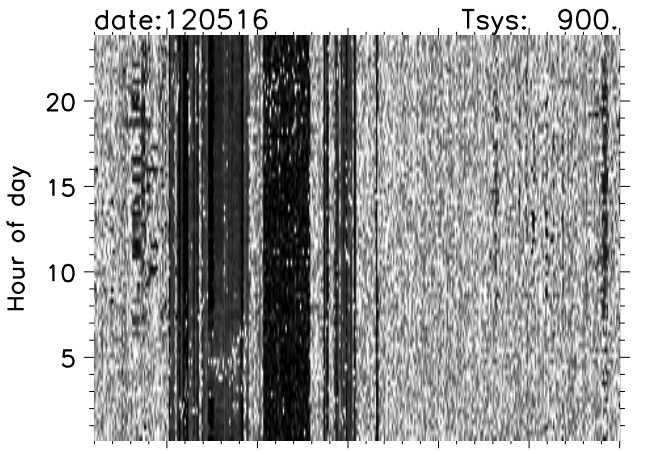
# Arecibo Obs hilltop monitor rfi time vs Freq images



650 700 750 800  
freq [Mhz]

650 700 750 800  
freq [Mhz]

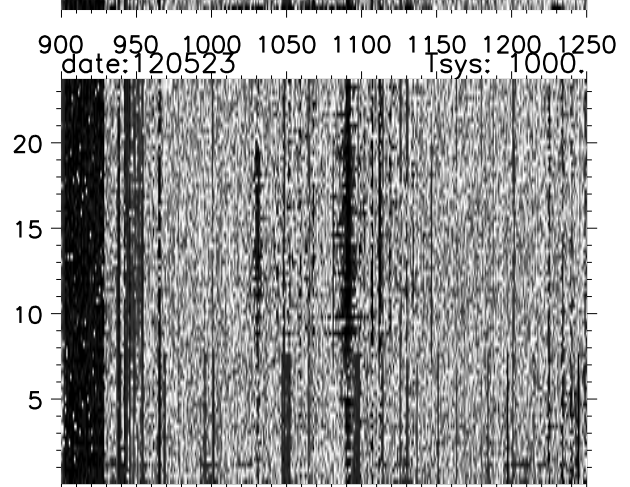
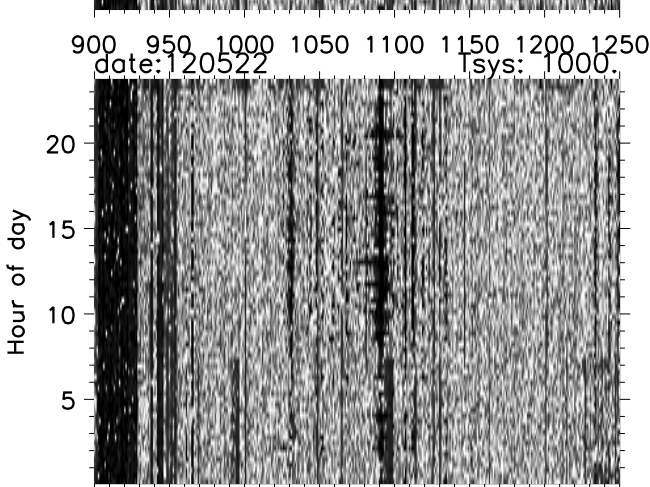
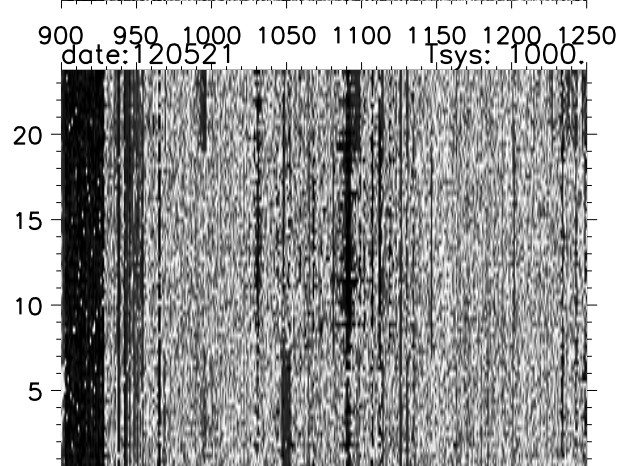
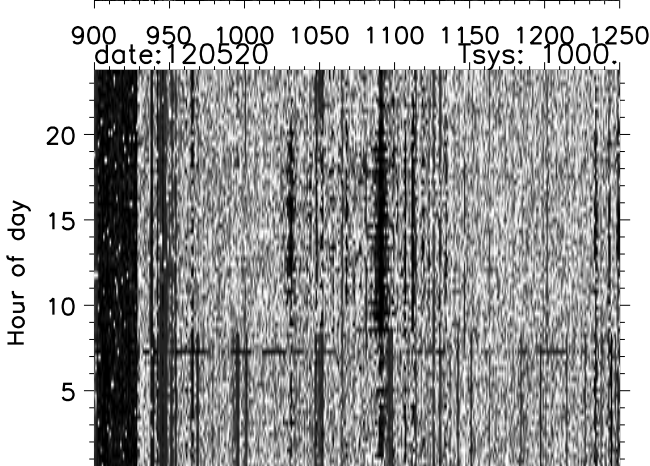
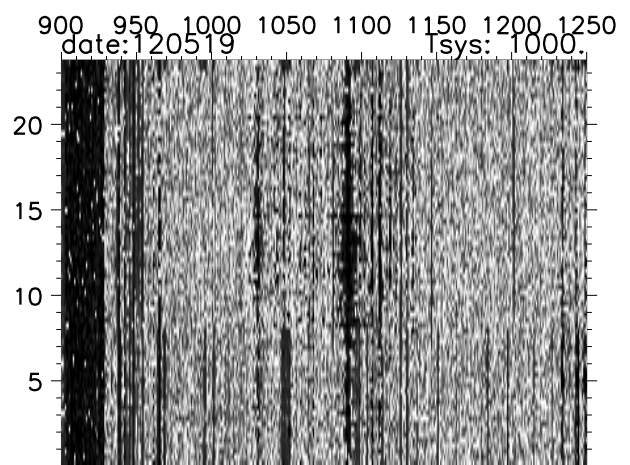
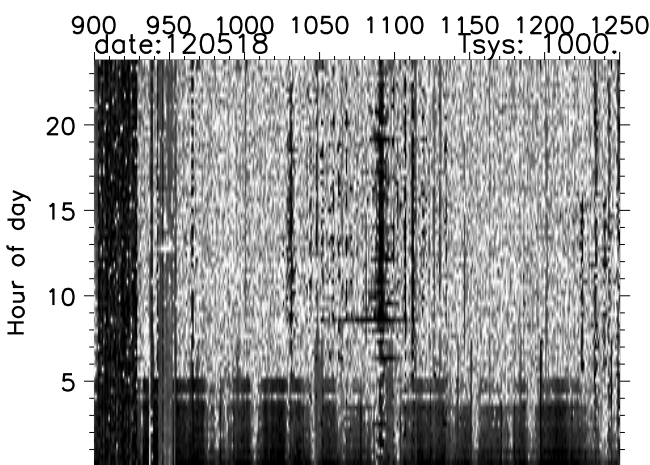
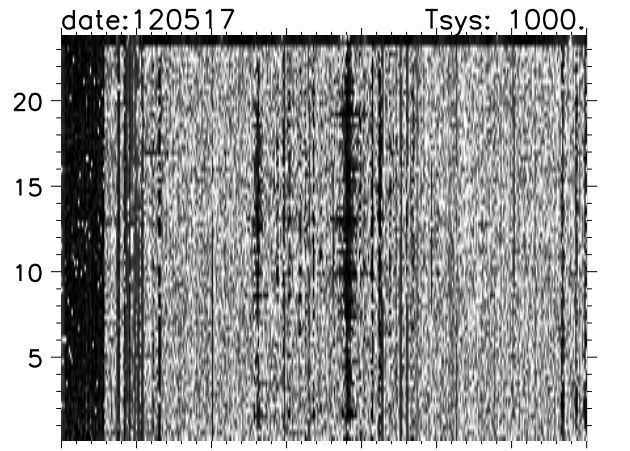
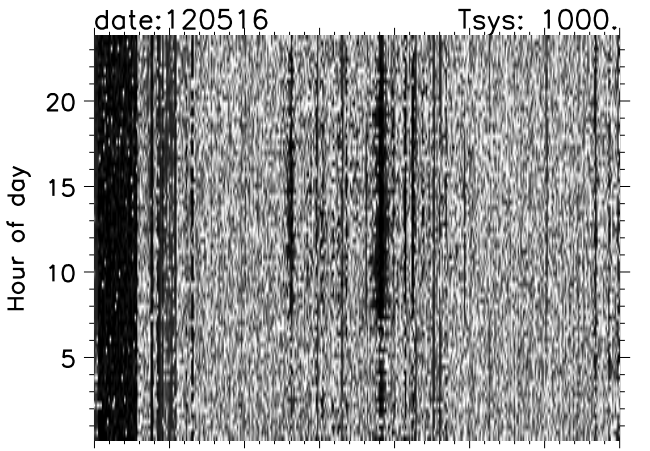
# Arecibo Obs hilltop monitor rfi time vs Freq images



850 900 950 1000 1050 1100  
freq [MHz]

850 900 950 1000 1050 1100  
freq [MHz]

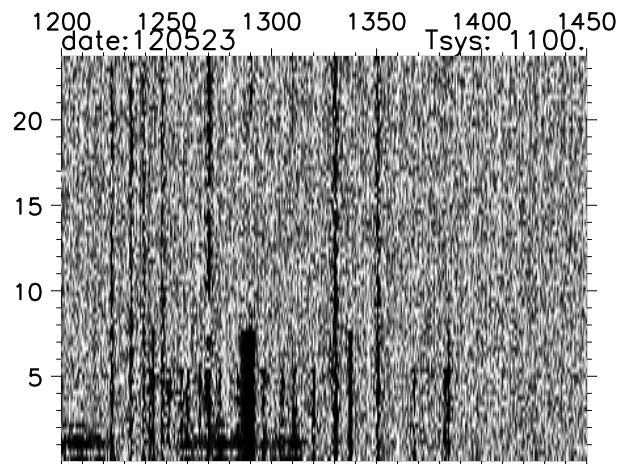
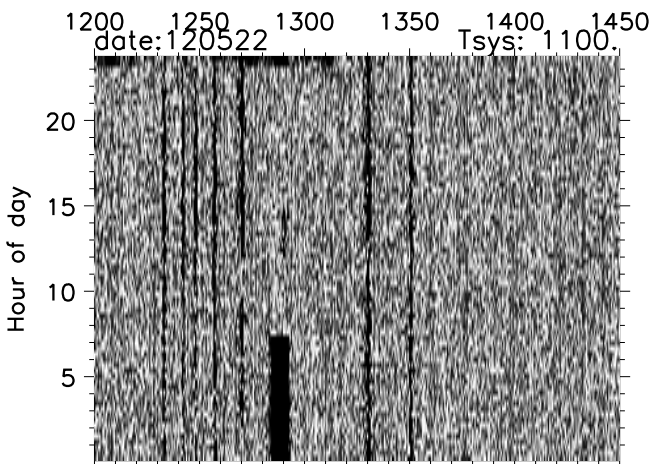
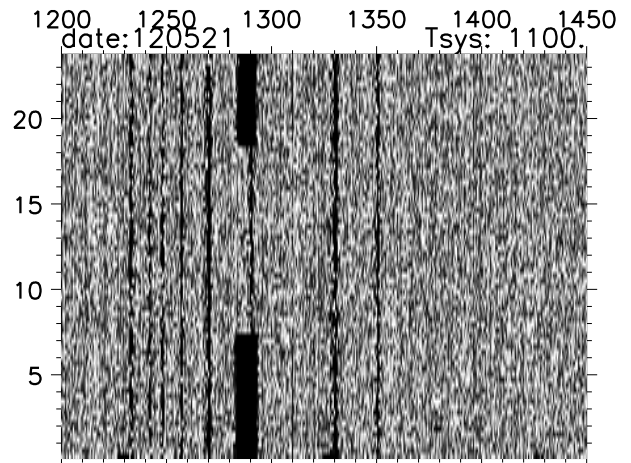
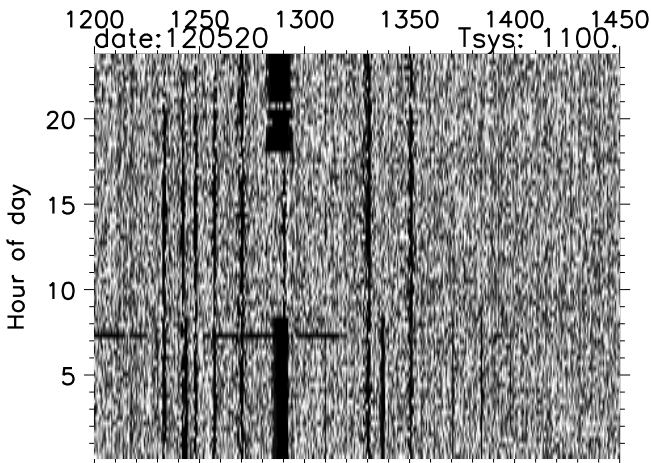
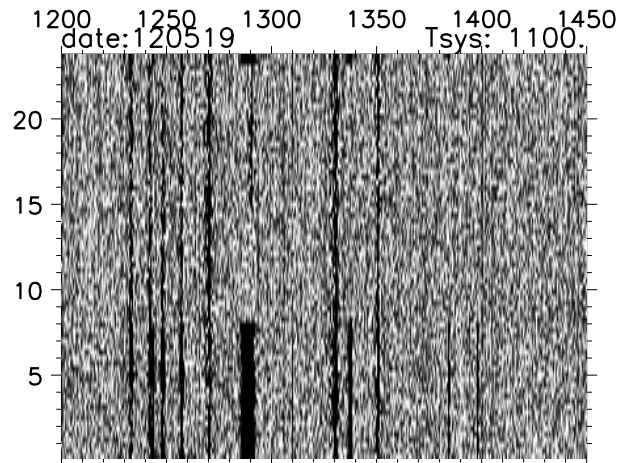
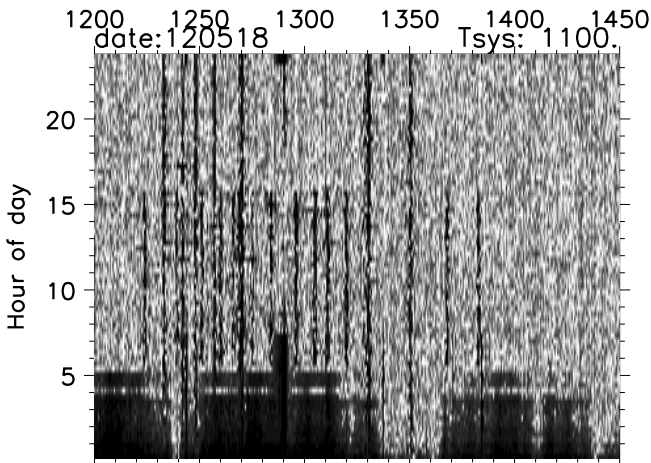
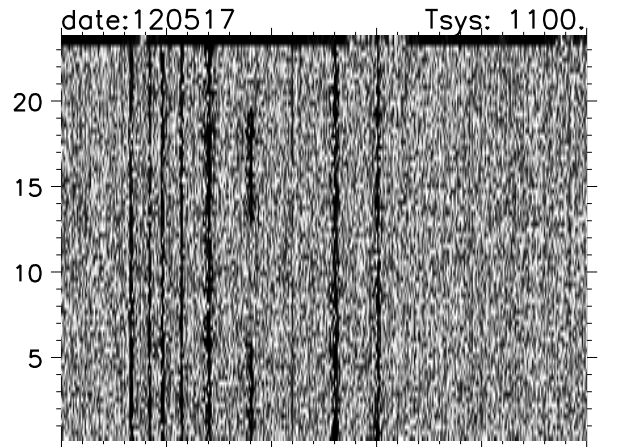
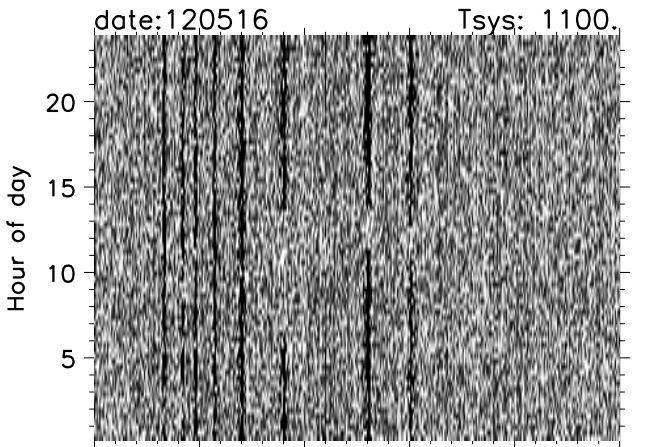
# Arecibo Obs hilltop monitor rfi time vs Freq images



freq [Mhz]

freq [Mhz]

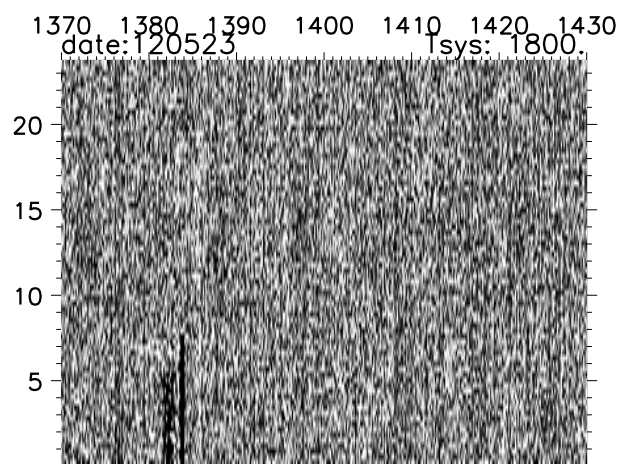
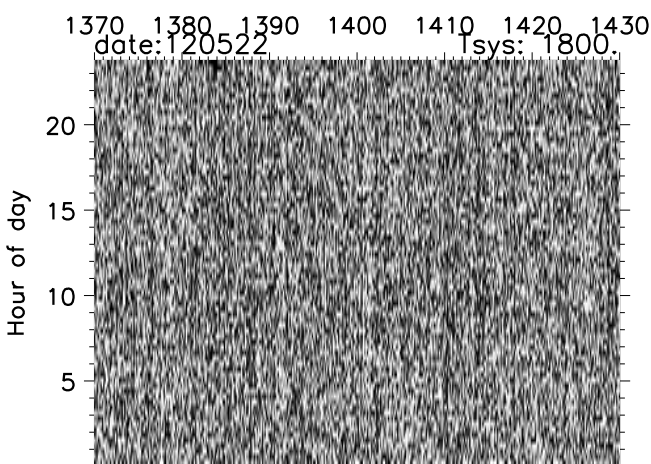
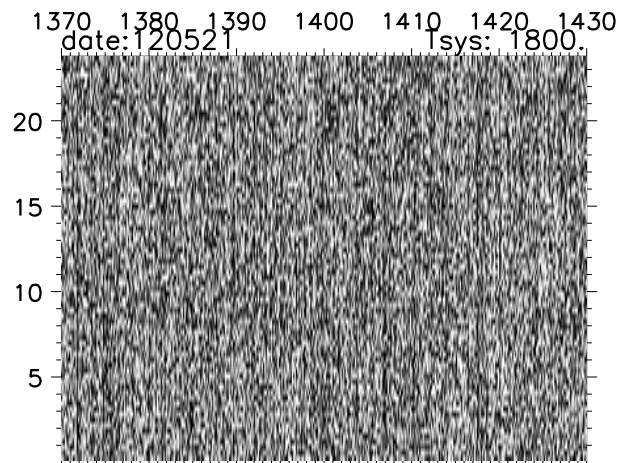
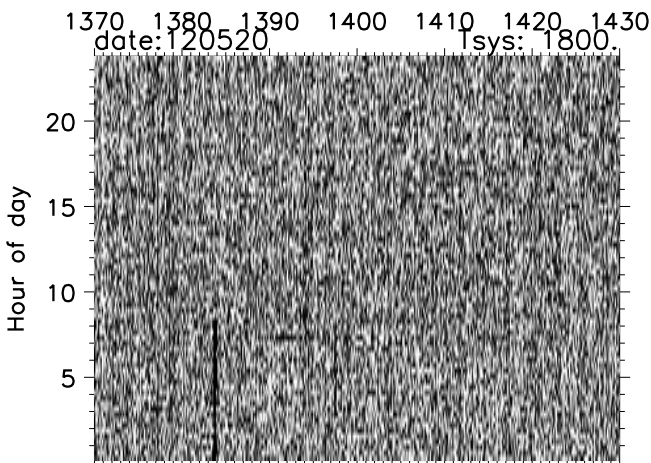
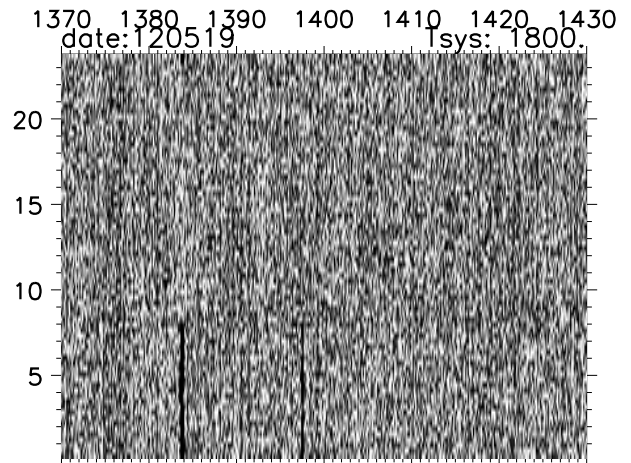
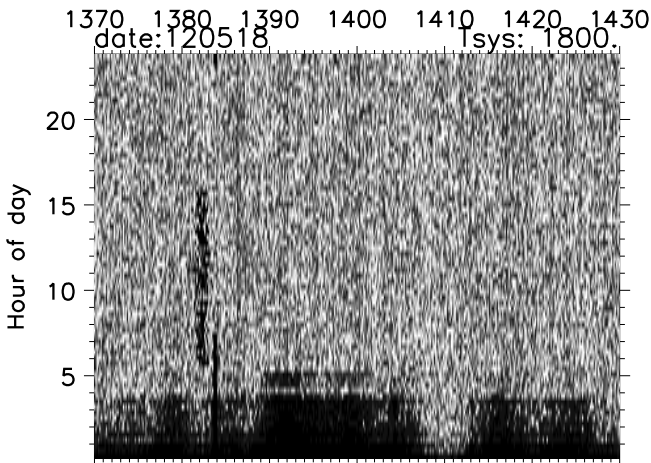
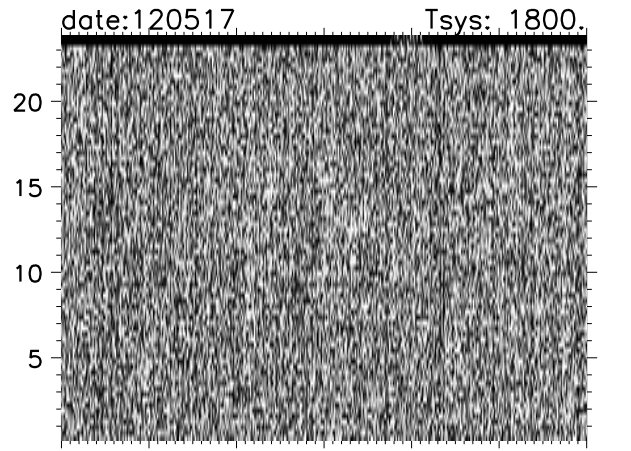
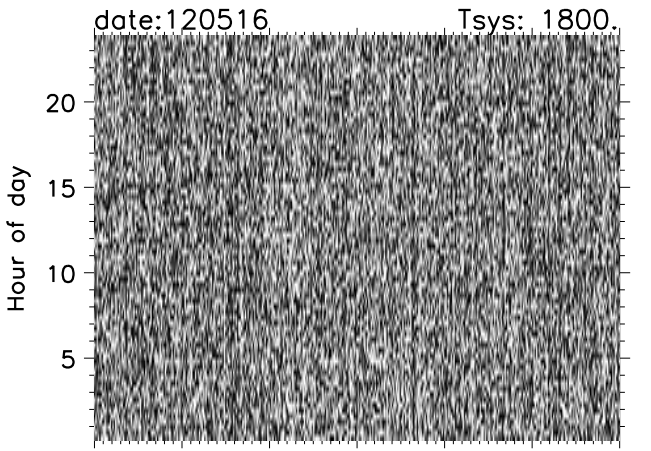
# Arecibo Obs hilltop monitor rfi time vs Freq images



1200 1250 1300 1350 1400 1450  
freq [Mhz]

1200 1250 1300 1350 1400 1450  
freq [Mhz]

# Arecibo Obs hilltop monitor rfi time vs Freq images



1370 1380 1390 1400 1410 1420 1430  
freq [Mhz]

1370 1380 1390 1400 1410 1420 1430  
freq [Mhz]