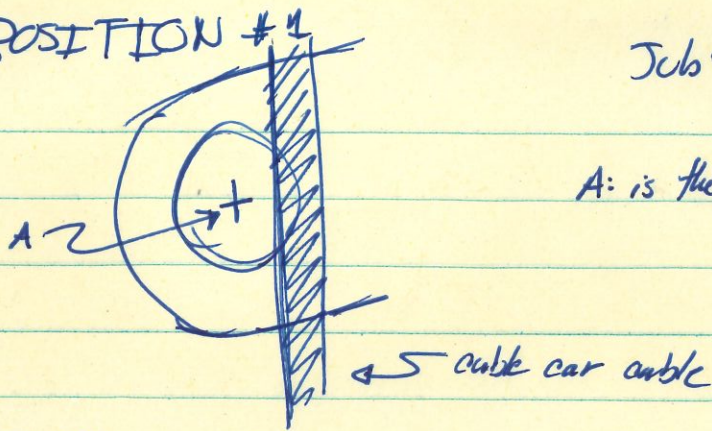


POSITION #1

Job: auxn 8

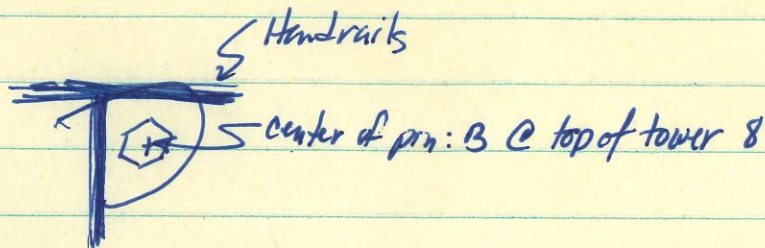
13 Aug 20



A: is the center of the pin @ platform

11:56 AM

A: TPS001, TPS002, TPS003

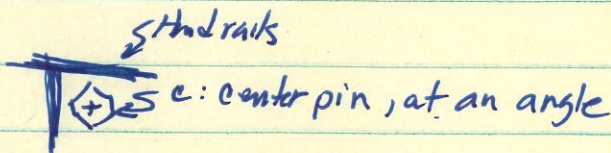


B: TPS004, TPS005, TPS006

POSITION #2

Survey point to ~~farther~~ closer to trash bin

Tower 8:



ⓐ TPS007, TPS008, TPS009

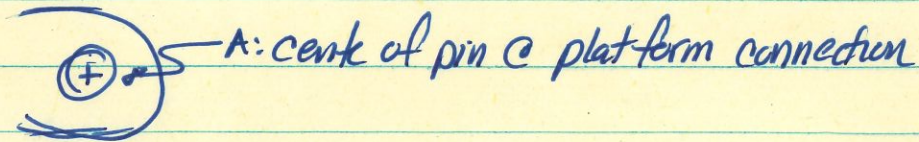
Position #2 PNT A

TPS0010, TPS0011, TPS0012

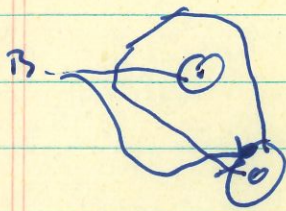
↳
(long) 161315

Job: aux 4n

POSITION #1: right next to uranium plate @ visitor center



TPS001, TPS002, TPS003



center of pin TX4 AUX4N.
saw² see the pin. Hit FRONT of socket
above hole

B # TPS0004, TPS0005, TPS0006

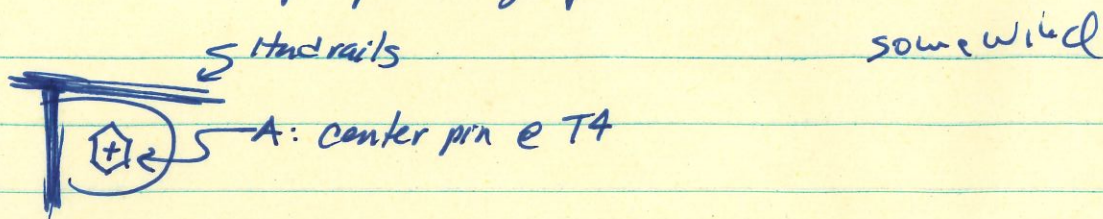
Position #2: next to the black binoculars ~~@ the~~ behind the "platform
^{support}
~~suspension~~ cube" display

A: TPS0007, TPS0008, TPS0009

B: TPS0010, TPS0011, TPS0012

Job: aux 54

POSITION #1: Service road between T4/T8, about 50mts from the pump discharge point



TPS0001, TPS0002, TPS0003

AUX 54 at Photo 9 in center

B



TPS0004, TPS0005, TPS0006

Started measuring points along the cable for cantenary fit

TPS0007 ; TPS0008

- We tripped on one of the tripod legs. Had to re-level the ~~the~~ T.S.

B: TPS0009, TPS0010 * taking points along the cable from B to A

1st: TPS0011

2nd: TPS0012

3rd: TPS0013 - BAD, leaf in sight

~~3rd: TPS0014~~

4: ~~TPS0014~~

TPS0014⁴ gang back to the right, angle reading unstable

TPS0015

~~TPS0016~~: left to TPS0015, did not resolve too bright light

TPS0016: moving to the right past the leaves

TPS0017: 202mts, moving to the right

0825.
8723.081

TPS0018 212mts, to the right

TPS 0019 ²²³~~219~~mts, angle reading unstable,

~~TPS 0~~ 228mts, angle reading unstable,
it took three times to take this point

TPS0020 moving to the right

TPS0021 moving to the right 259mts

TPS0022 pin on T4

TPS 0023 pin on T4

Then 4 images of main L1 south that is unworked.