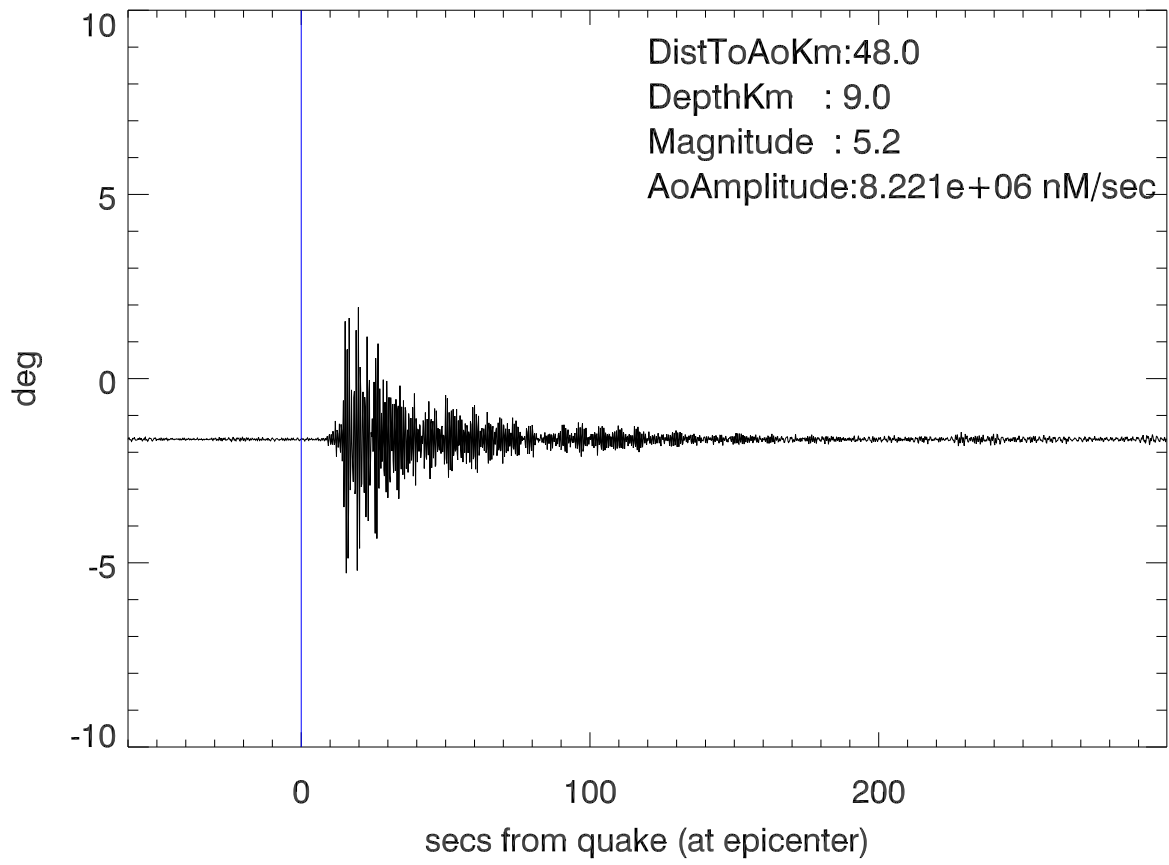
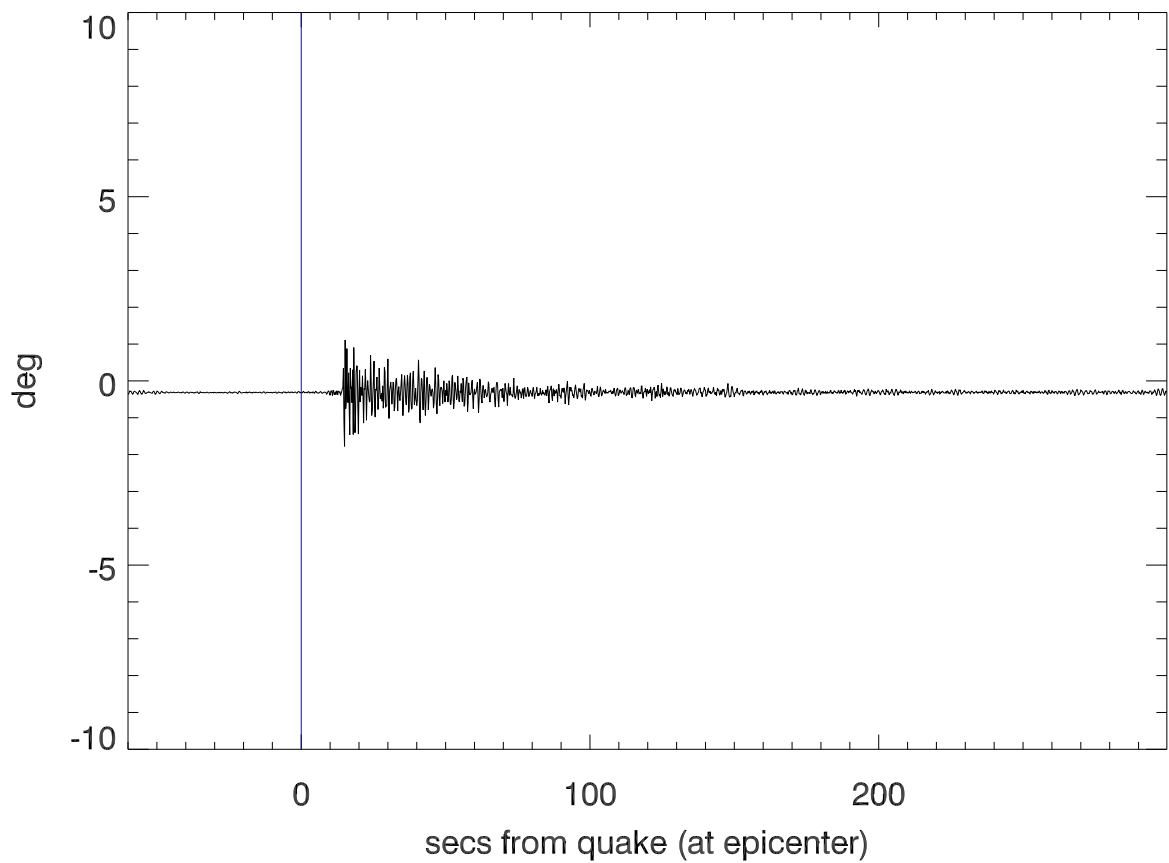


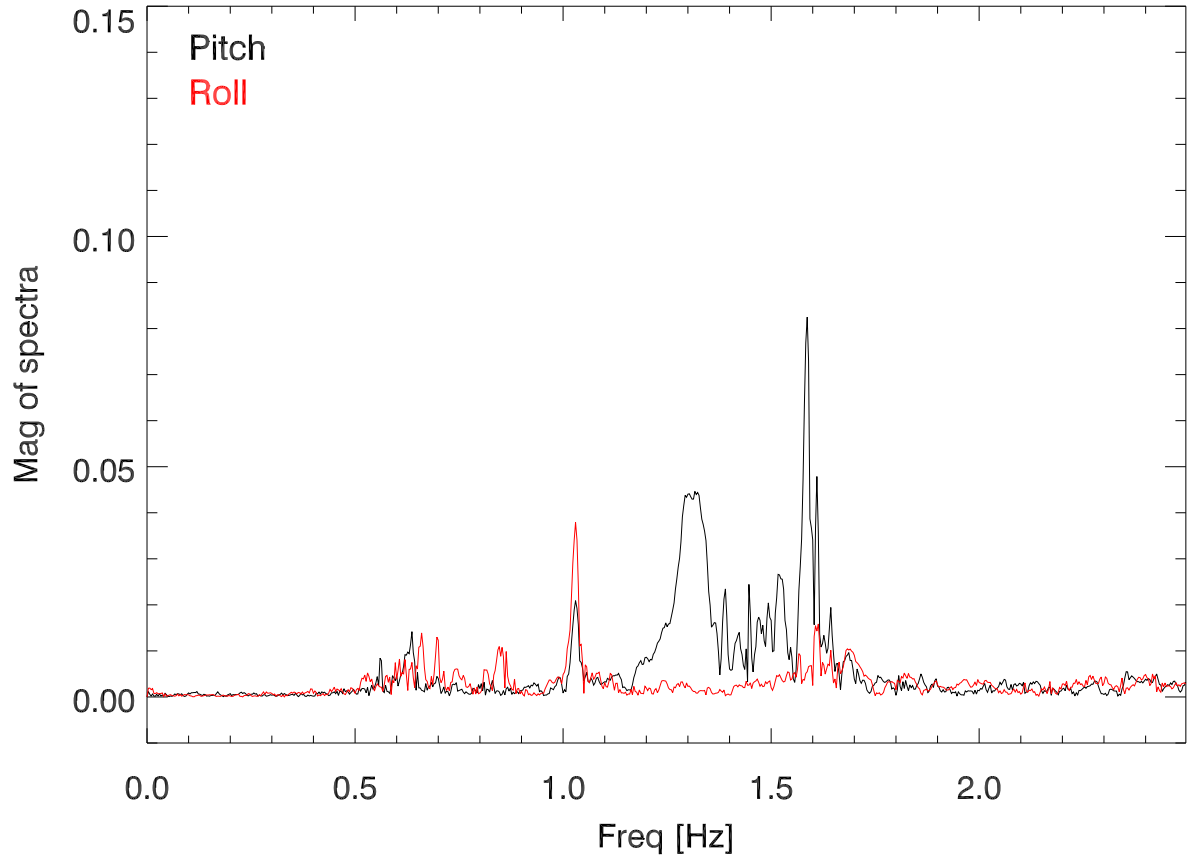
20200110 22:26:25(UTC) quake. Pitch tiltSensor in Dome



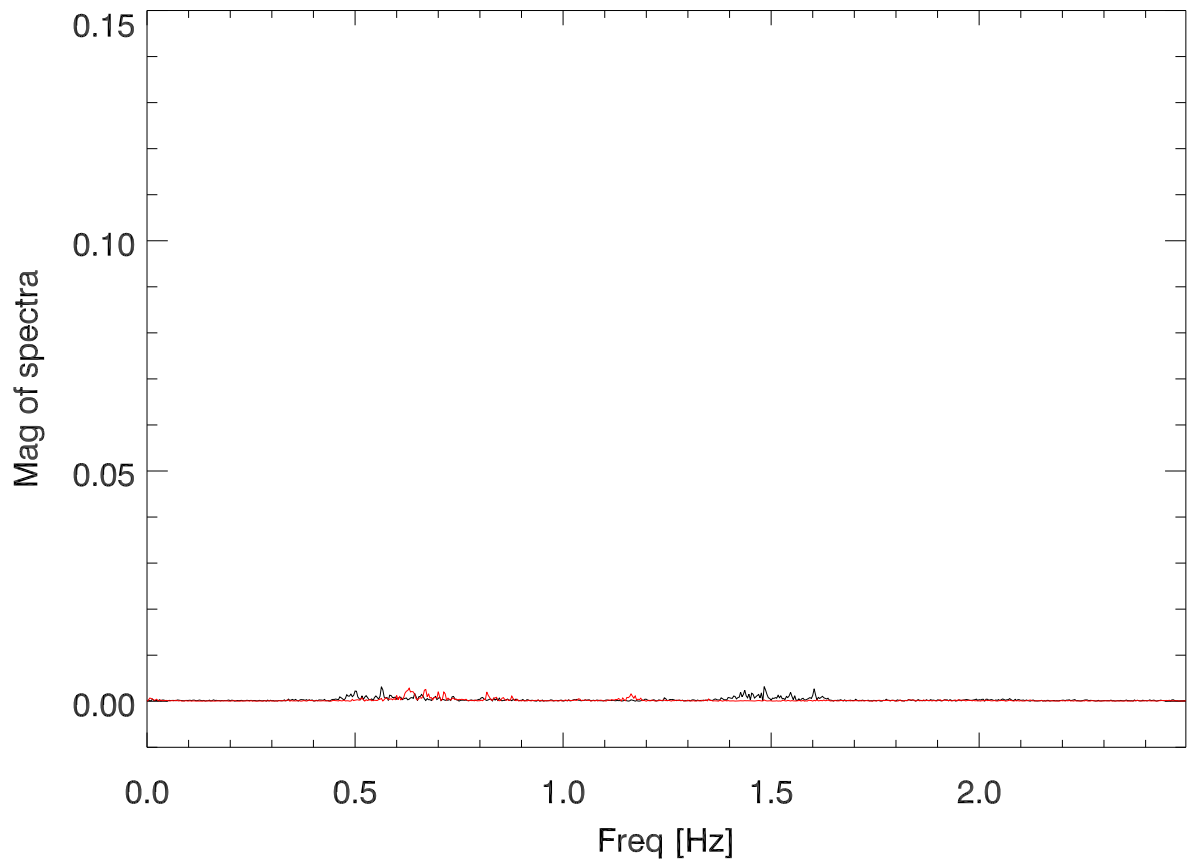
Roll tiltSensor in Dome



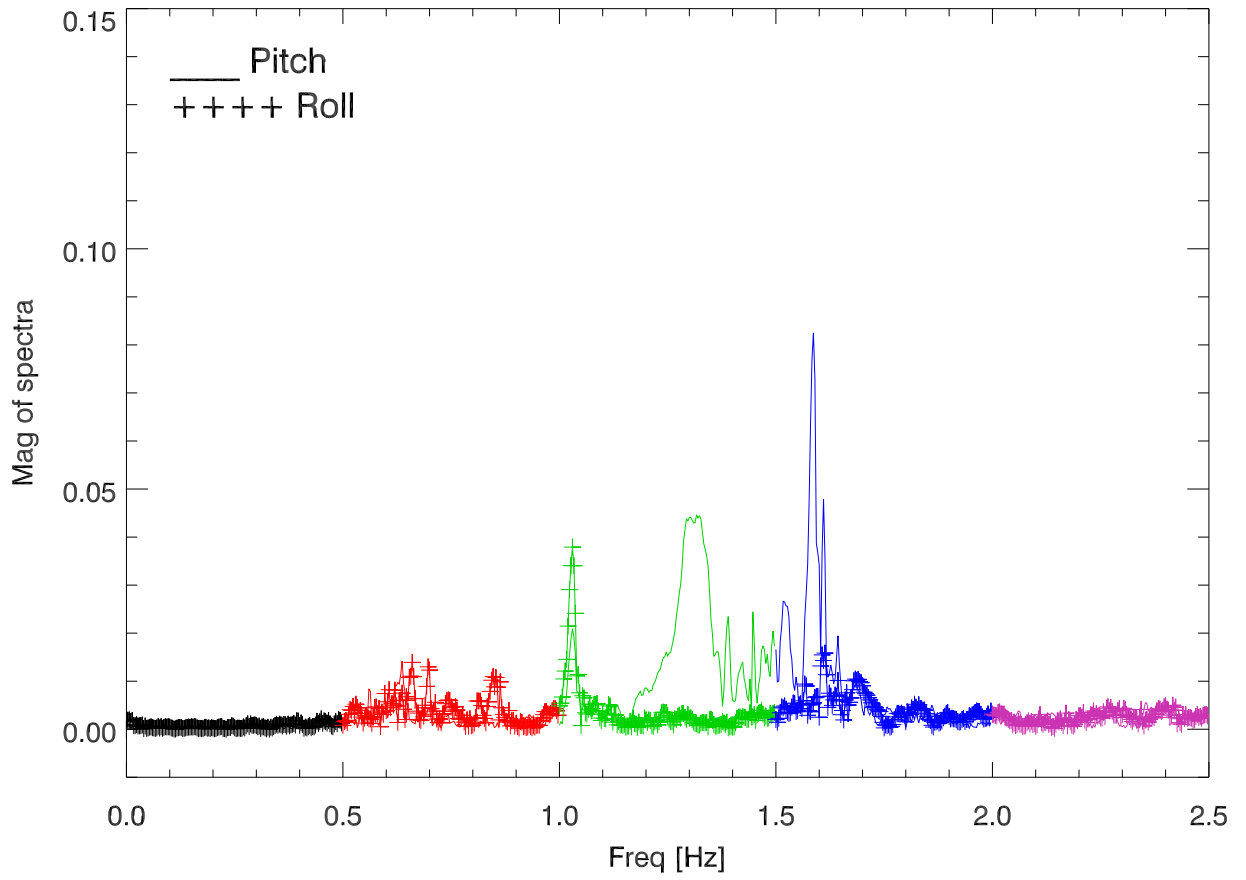
Magnitude of tilt sensor spectra around earthquake



Magnitude of tilt sensor spectra before earthquake



Pitch,roll spectra plotted in .5 Hz sections



Pitch,roll spectra showing aliasing at 1 sec sampling (tdKips)

