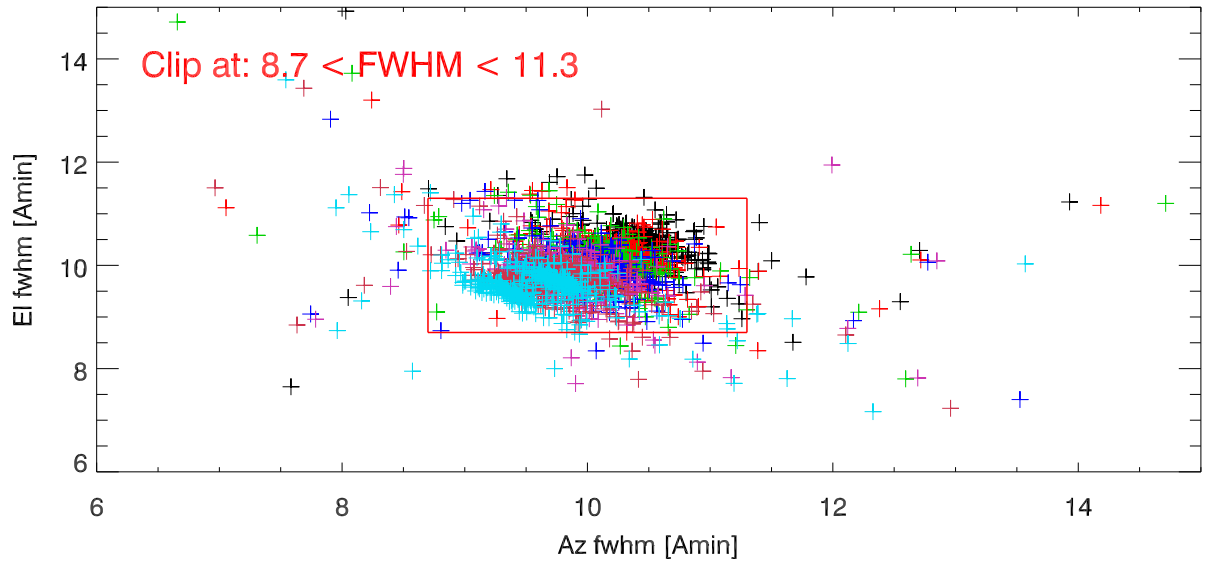
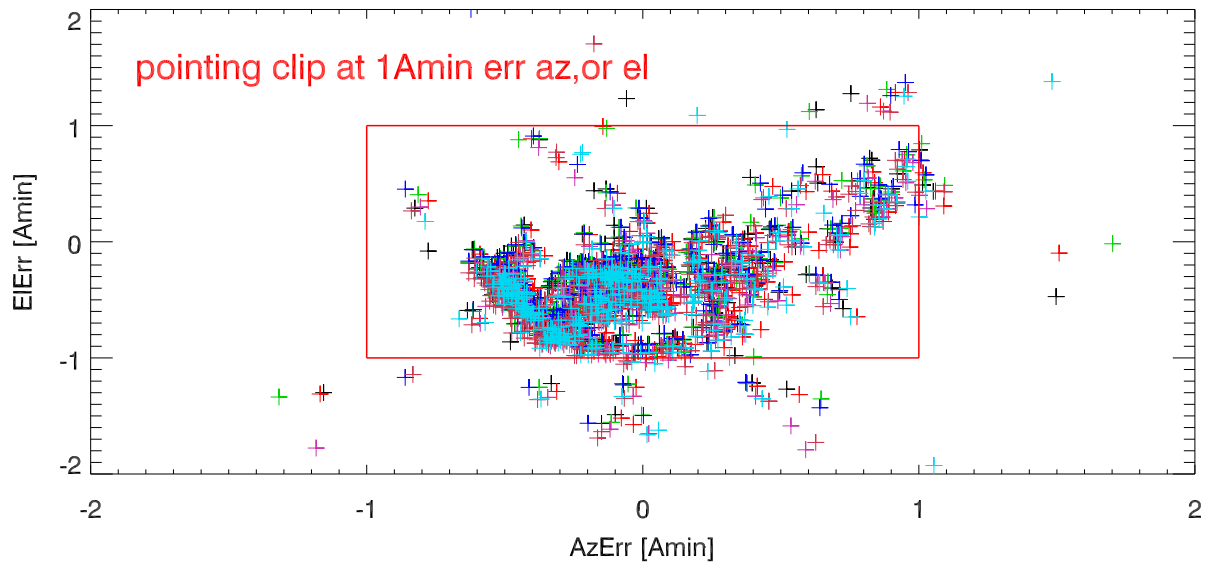


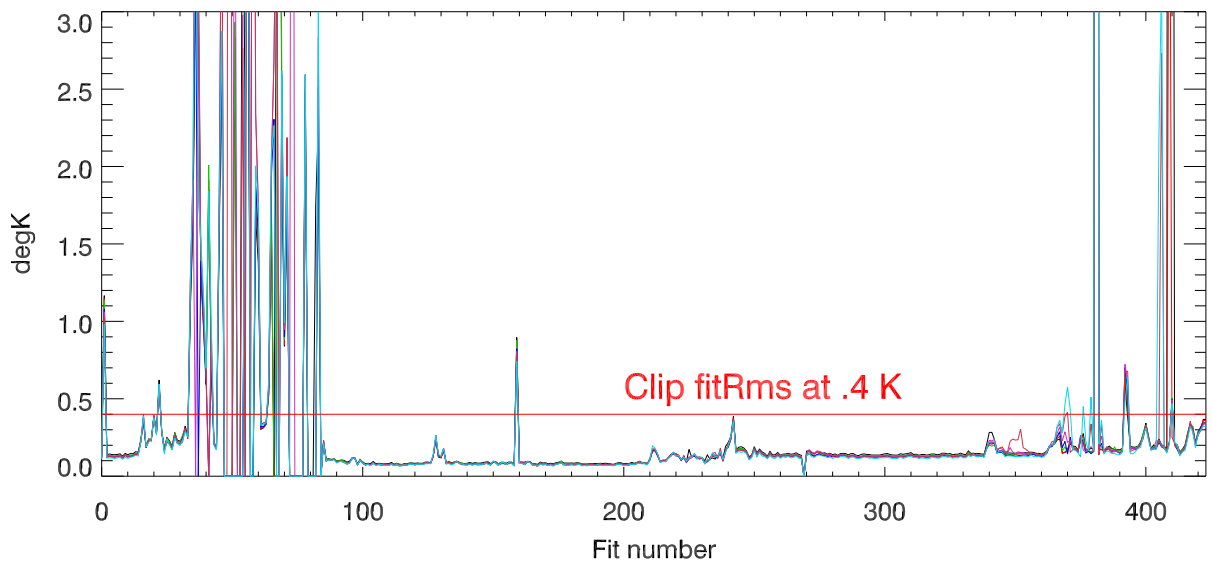
ju22 fits fwhmEl vs fwhmAz



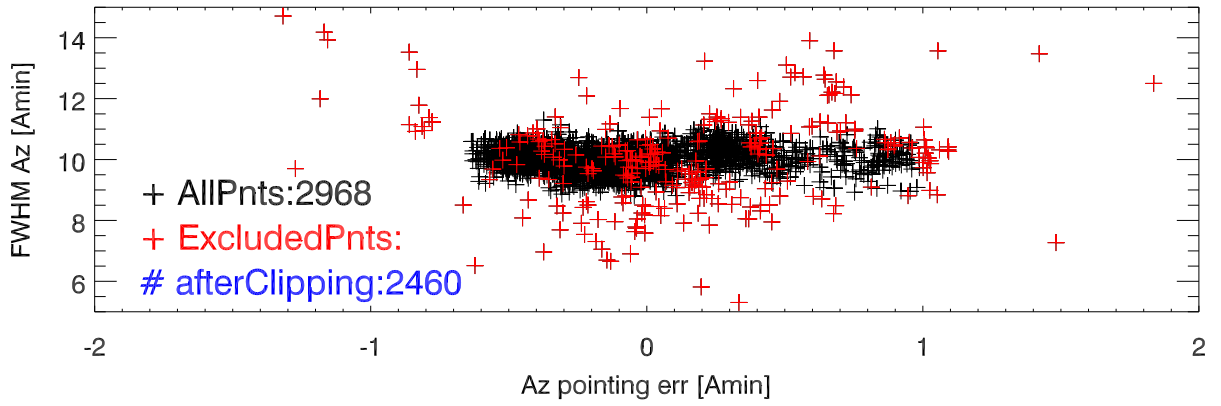
plot El pointing err vs az pointing err



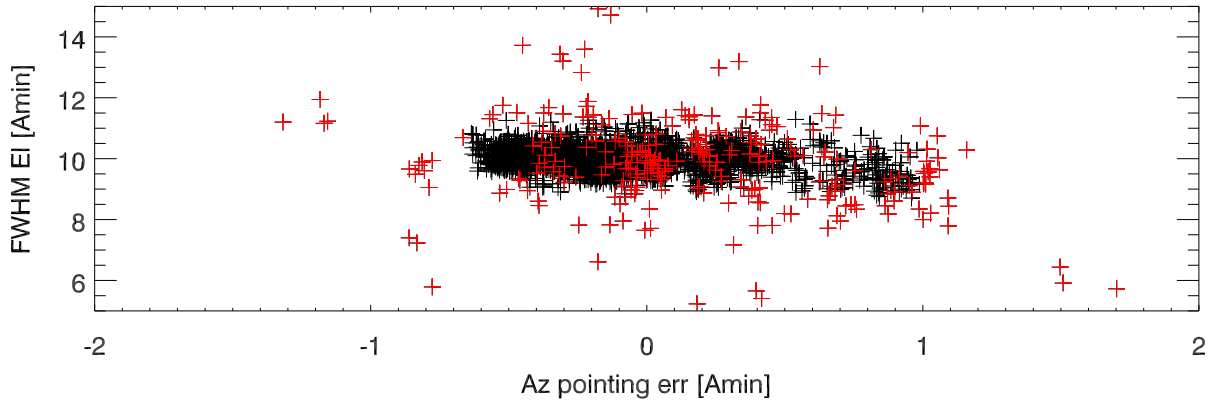
2d fit Rms



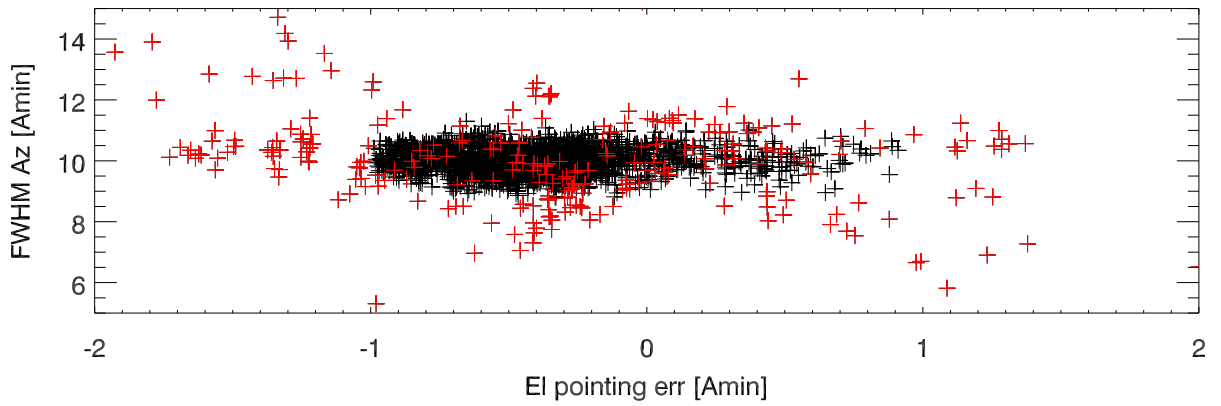
FWHM Az vs Az pointing error, 2dFits all freqBands



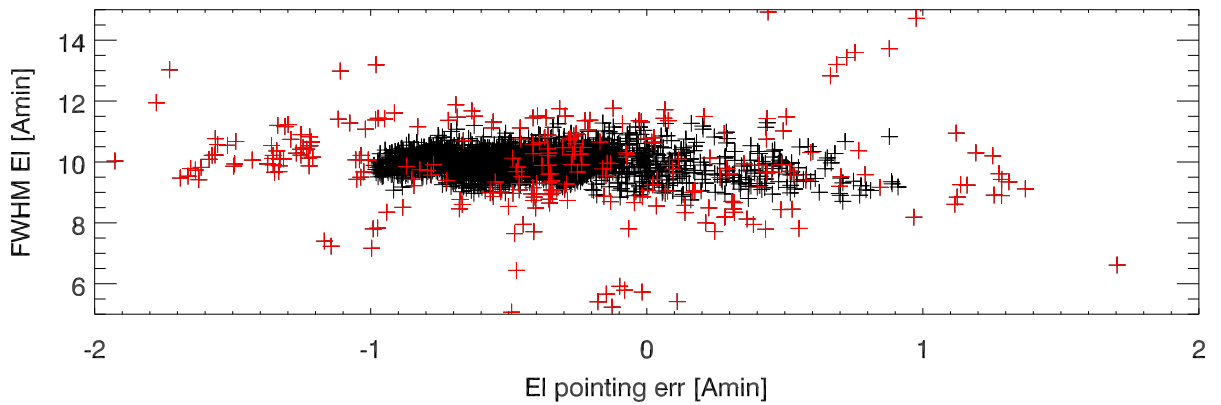
FWHM EI vs Az pointing error



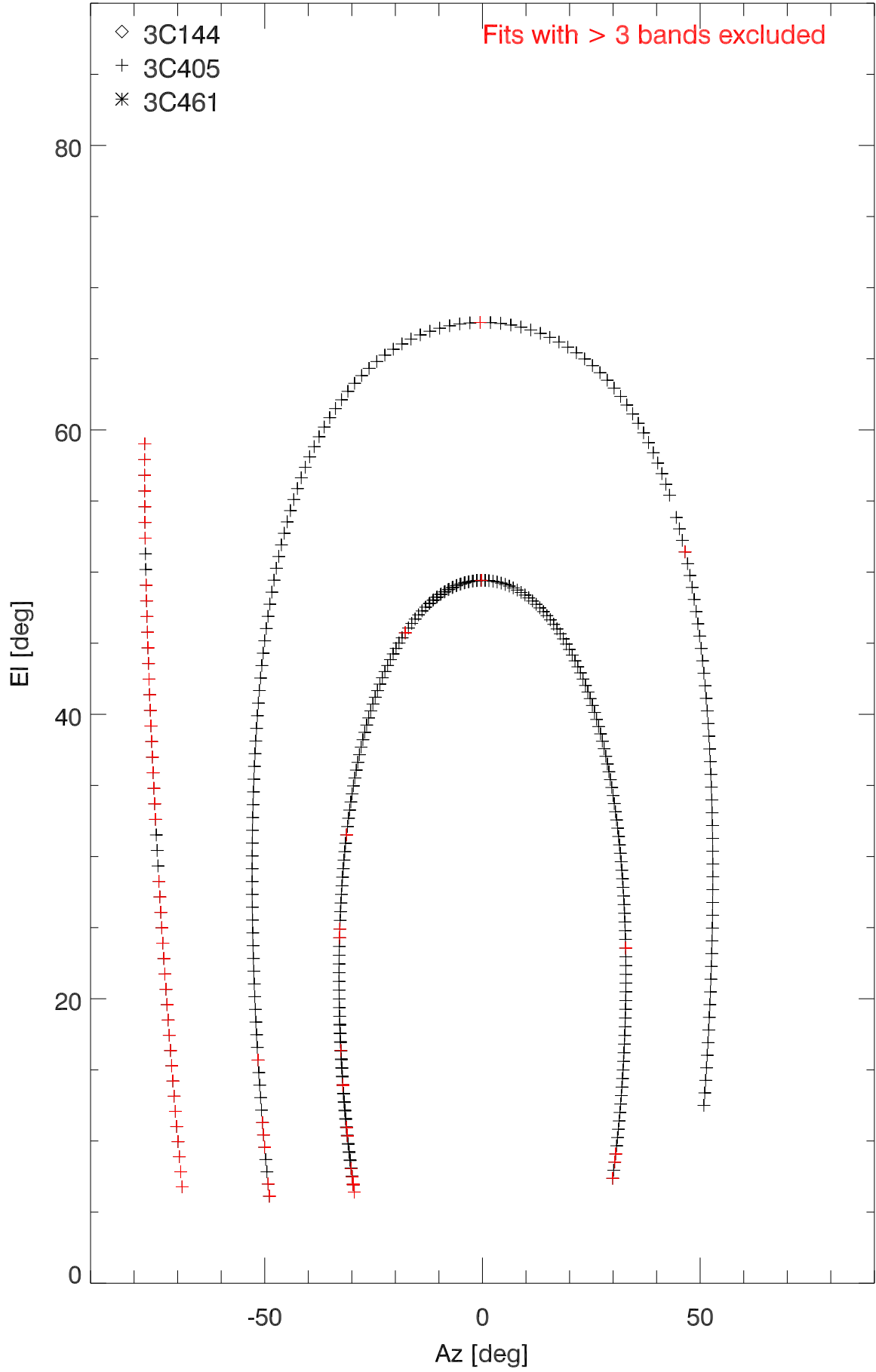
FWHM Az vs EI pointing error



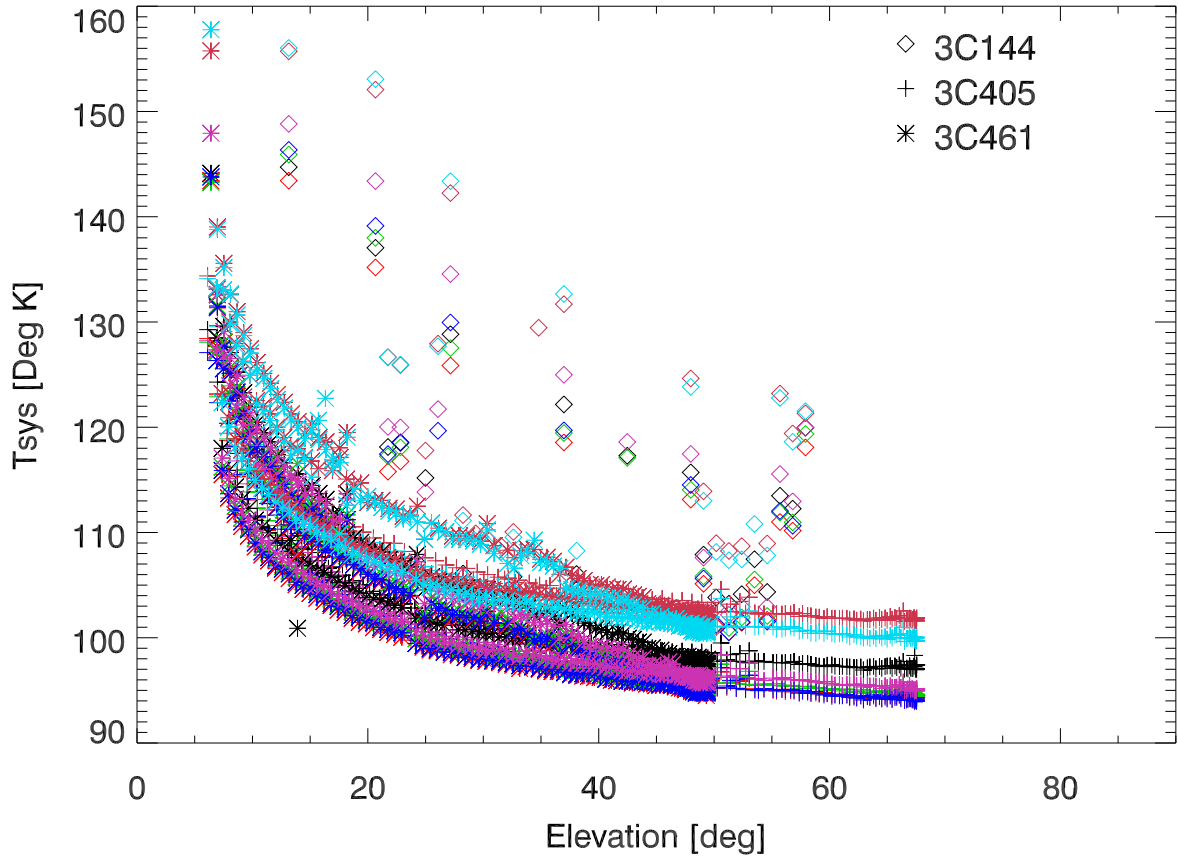
FWHM EI vs EI pointing error



jun22 fits. az,el coverage



Tsys from fits vs elevation (all data)



Tsys from fits vs elevation after clipping

