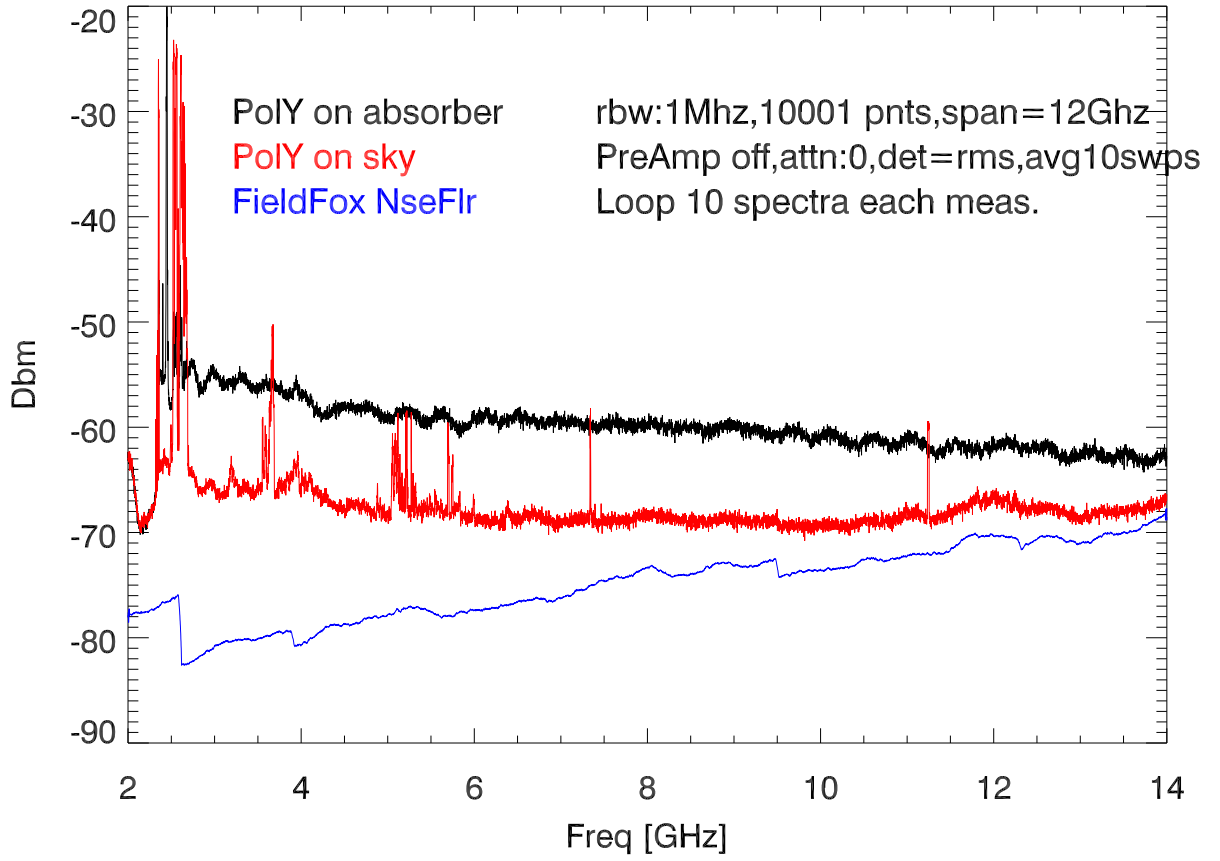
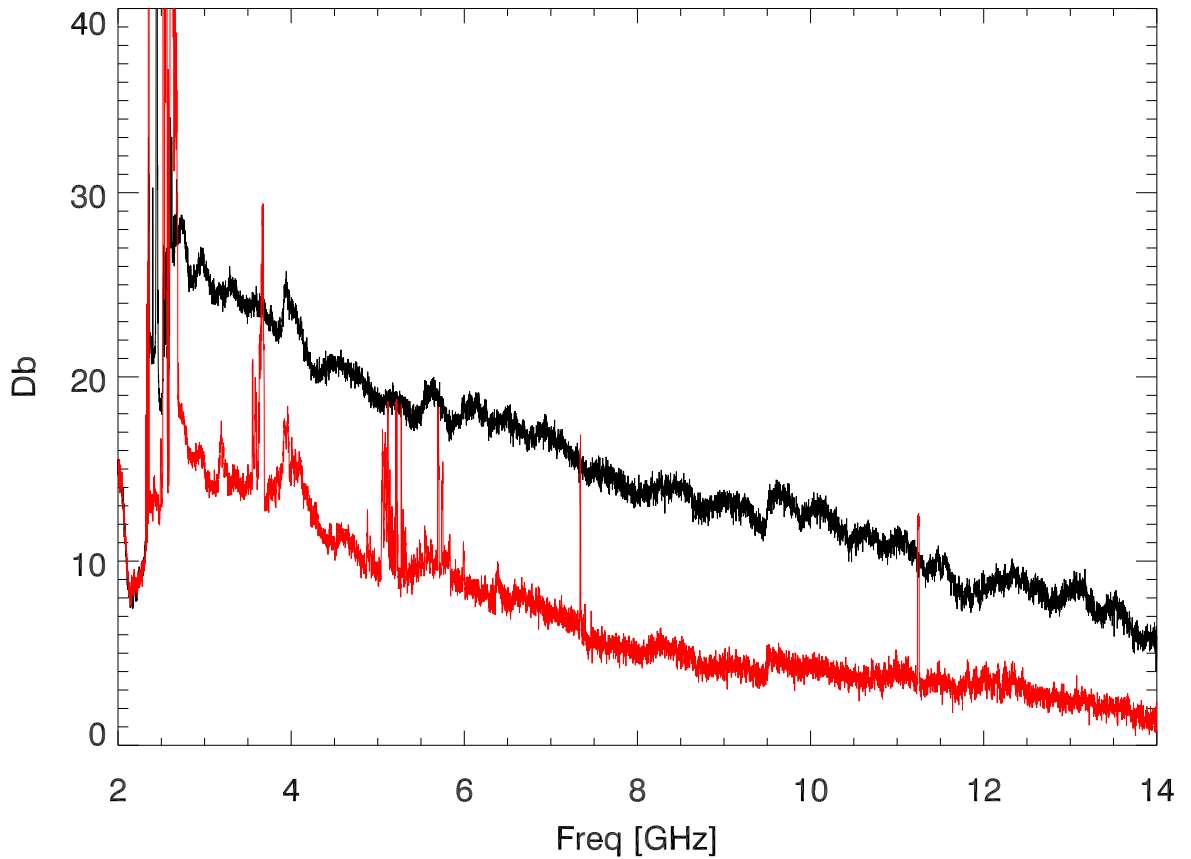


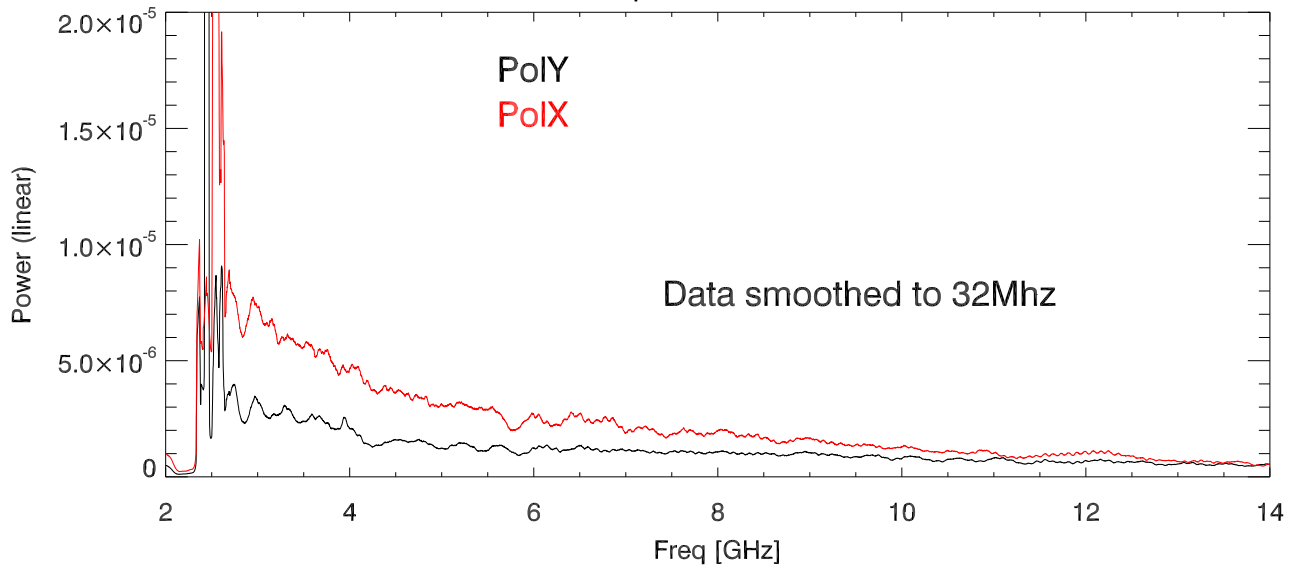
31mar23 wbRcv spectra at test range. PreampOff



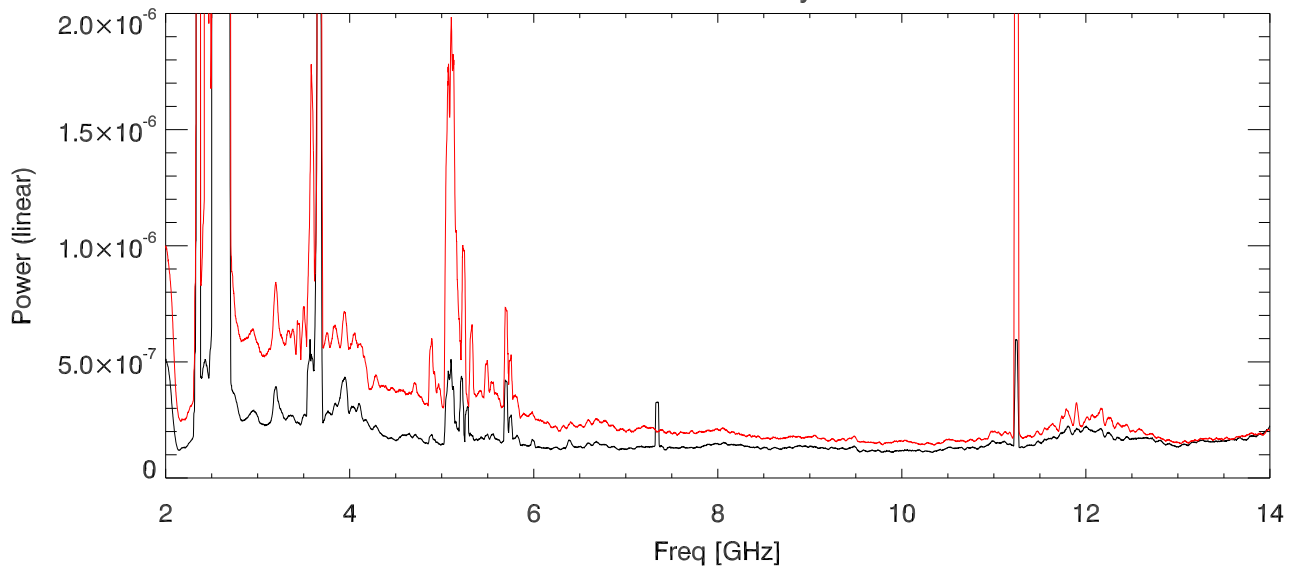
db above Noise floor for sky, abs measurement



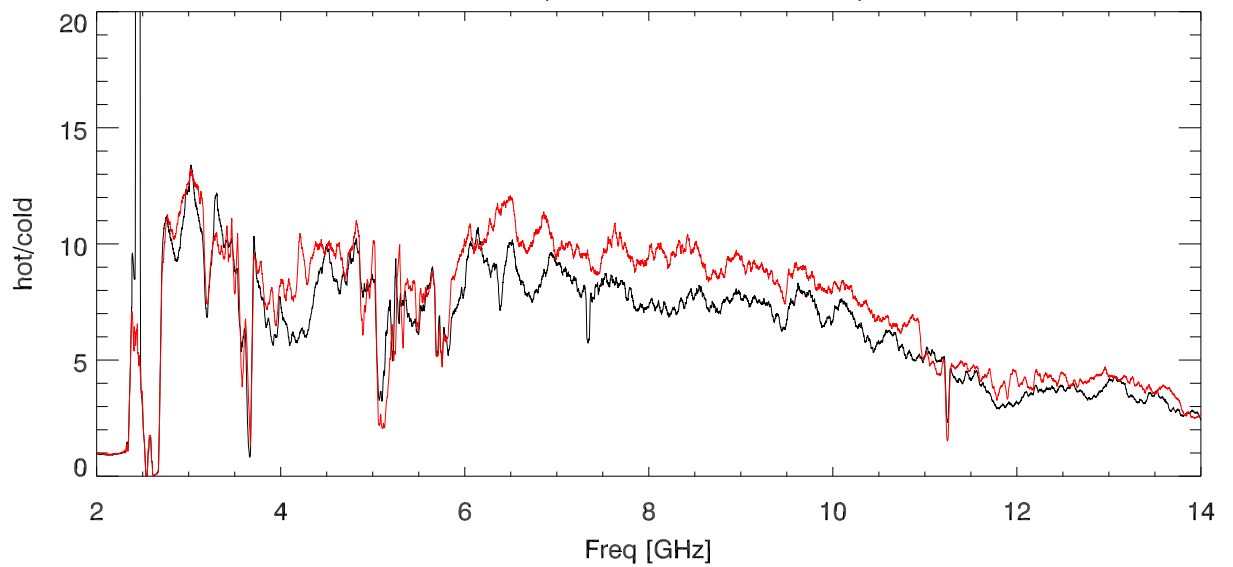
31mar23 cooled qrth antTestBld. Power on Abs



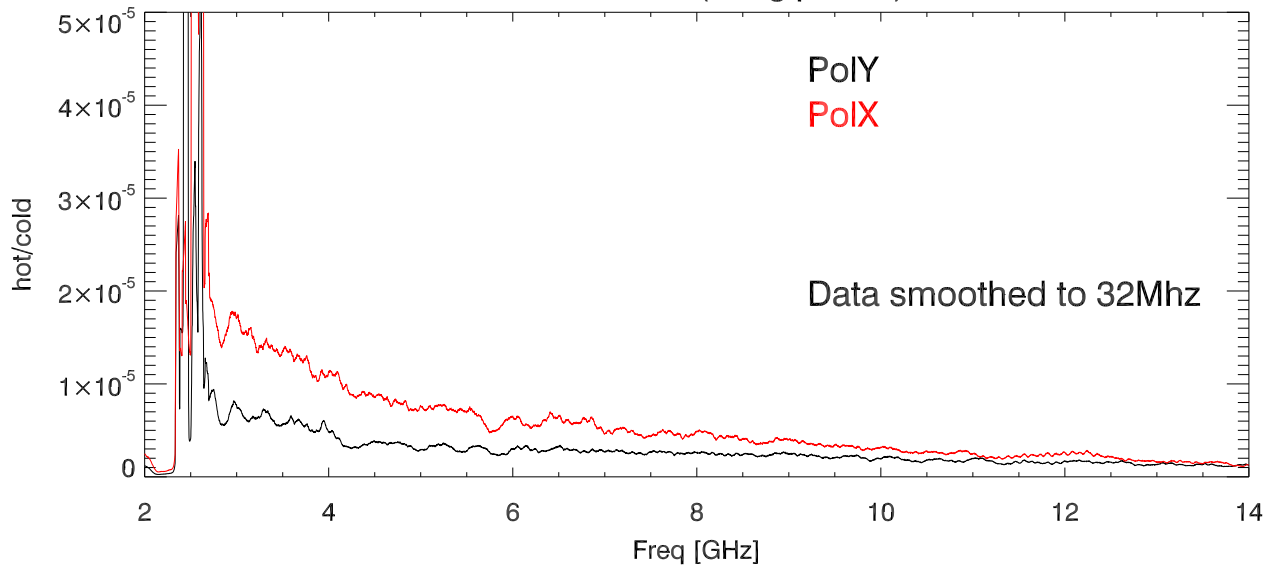
Power on sky



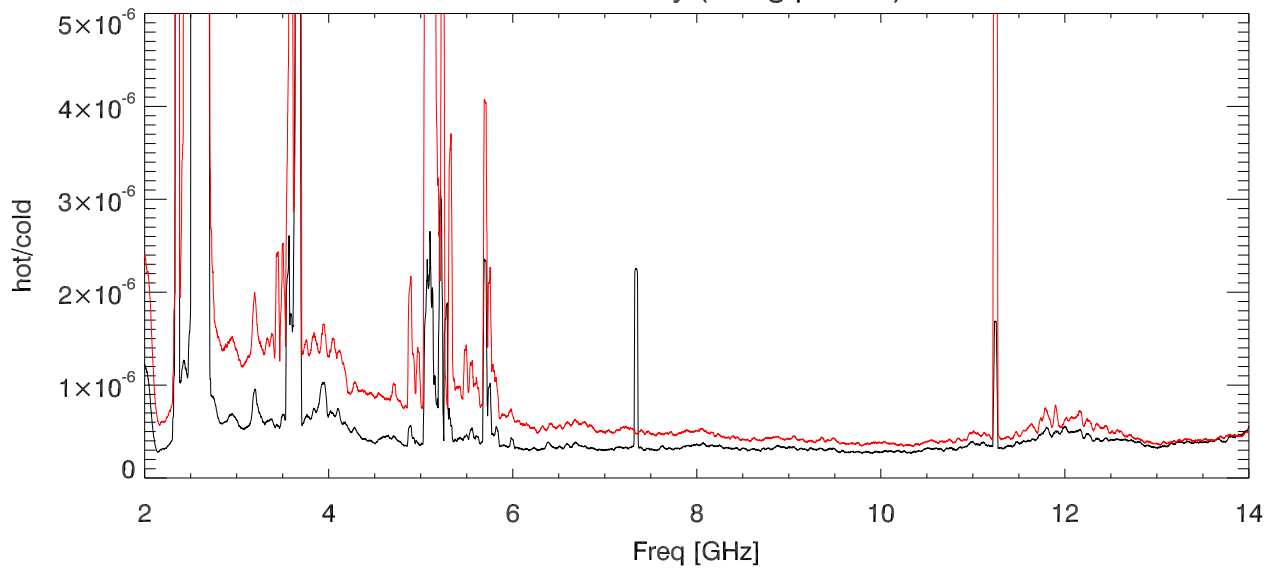
Yfactor (PowerHot/PowerCold)



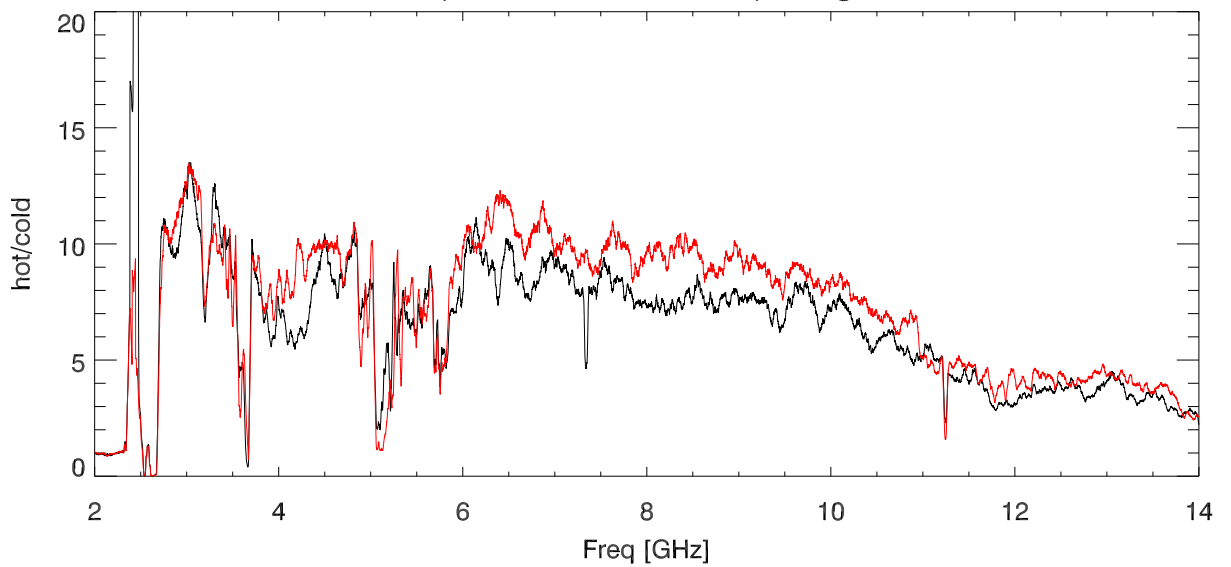
Power on Abs (using pkhold)



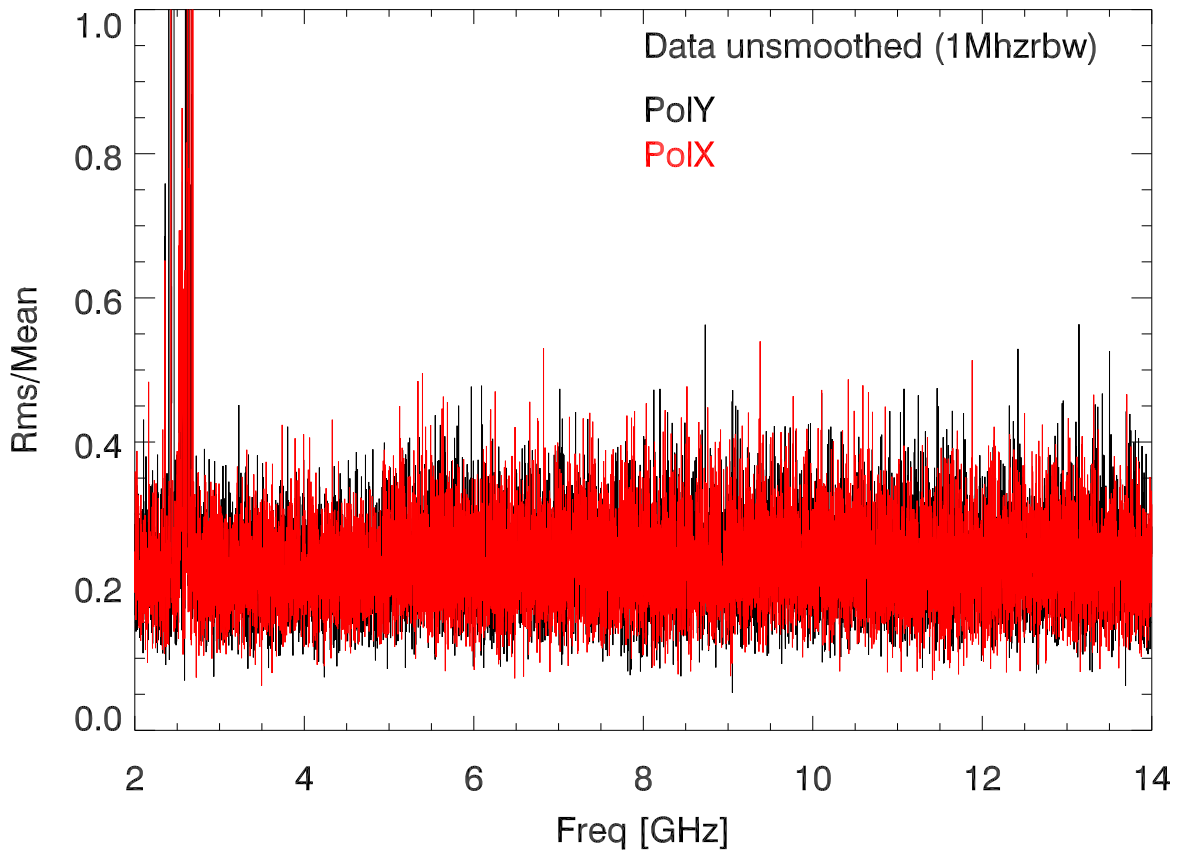
Power on Sky (using pkhold)



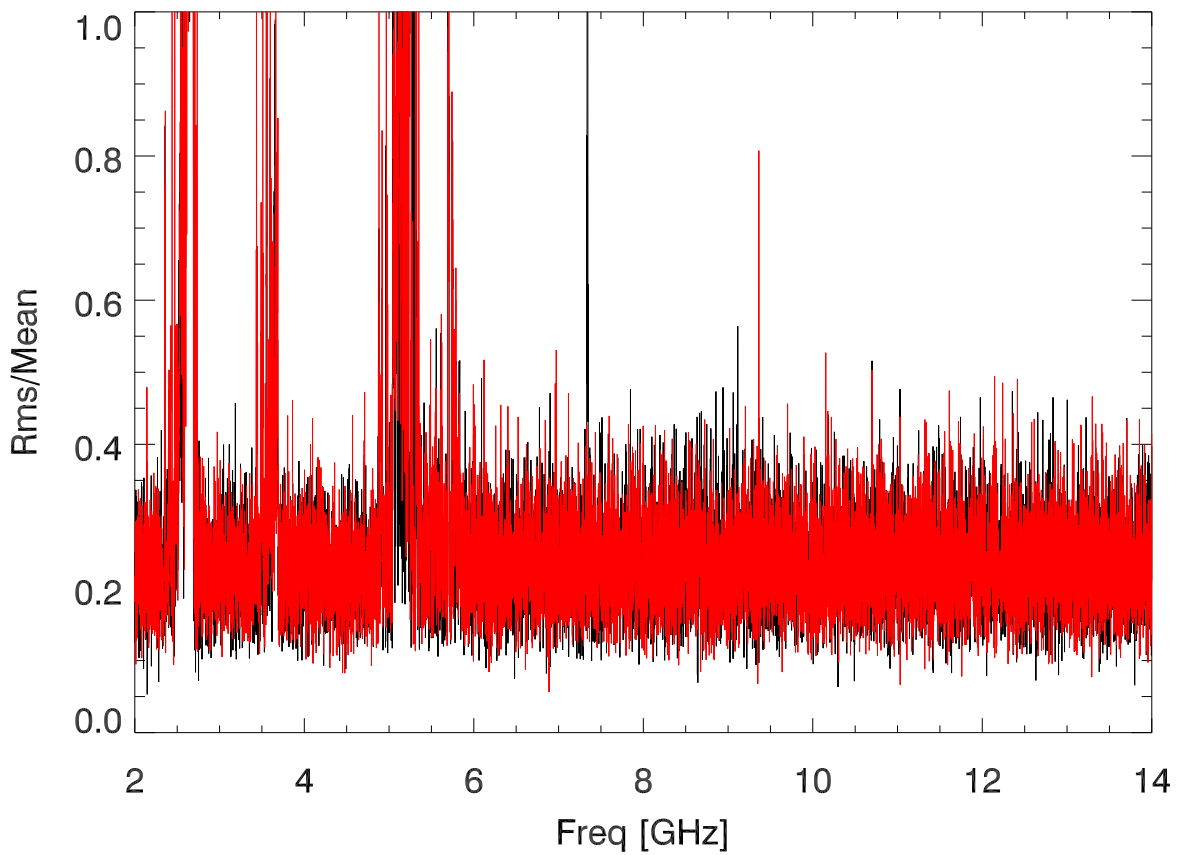
Yfactor (PowerHot/PowerCold) using PkHold



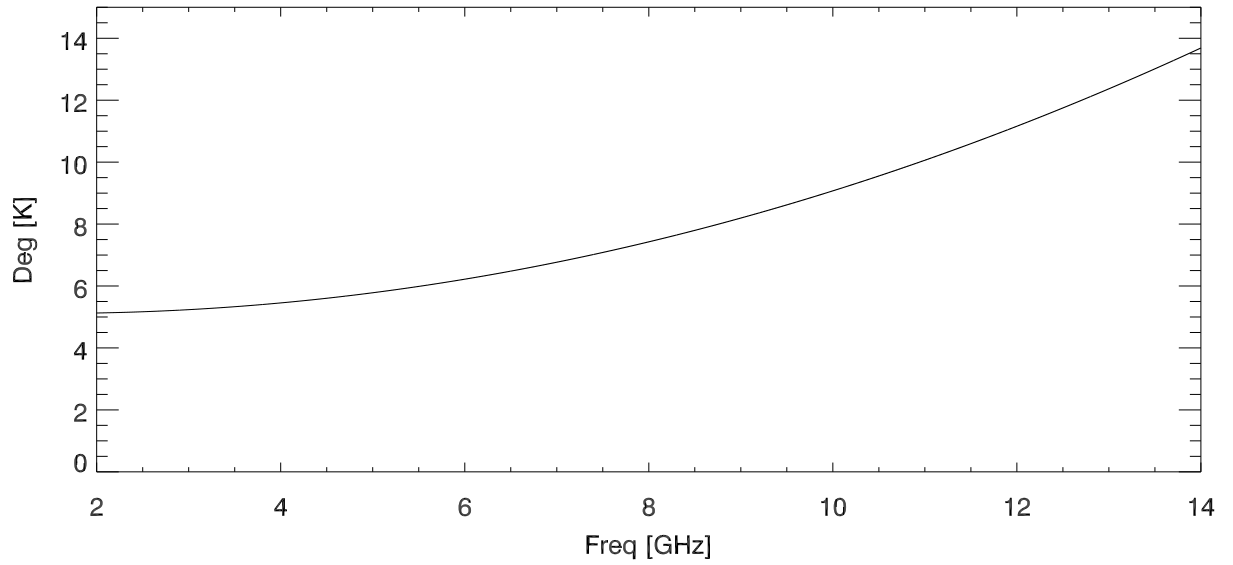
Rms/mean be freq chan for 10 spectra. (on Abs)



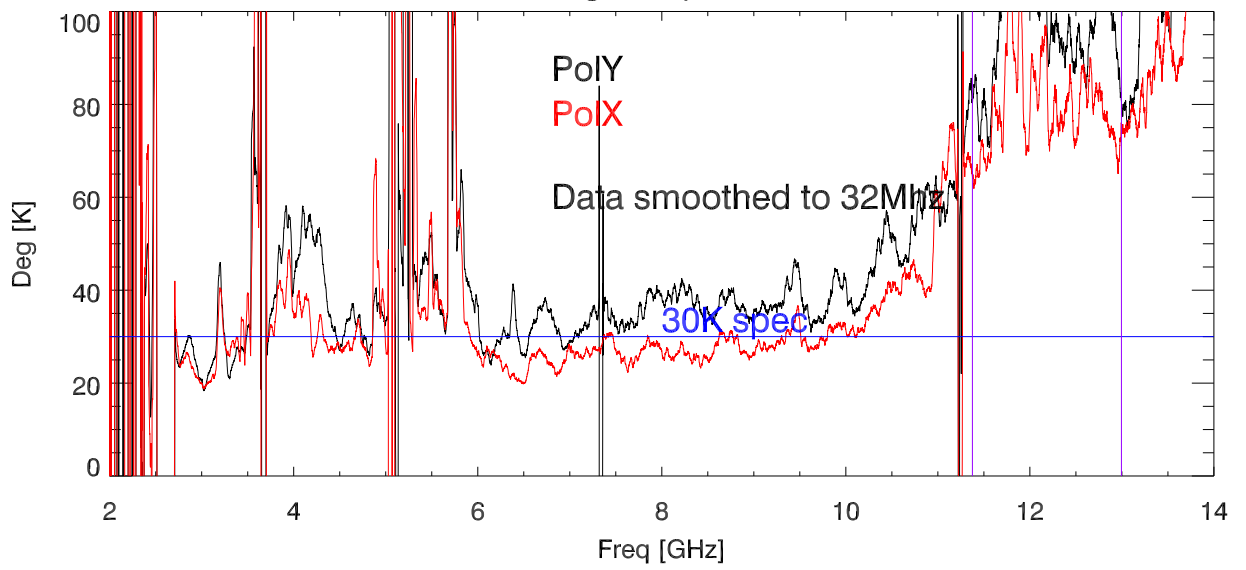
Rms/mean by freq chan for 10 spectra. (on Sky)



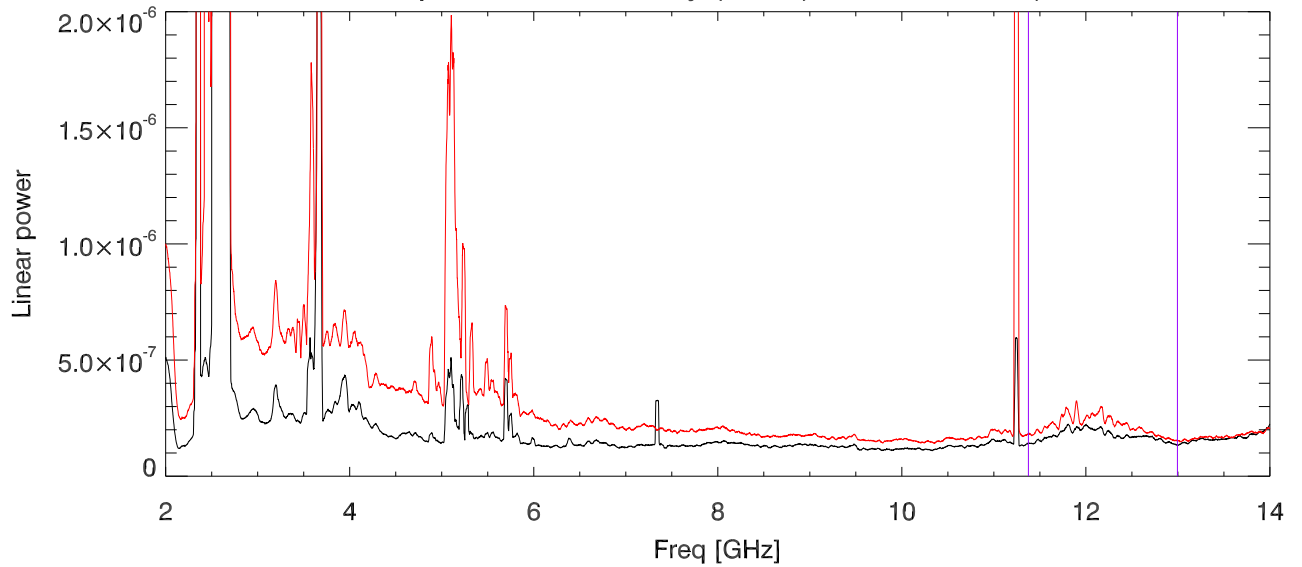
Tsky vs freq (from paulGoldsmiths plot)



Flange temperature



replot Power from sky (Tcold) measurements)



Blowup onsky Trcv 11-13 GHz

