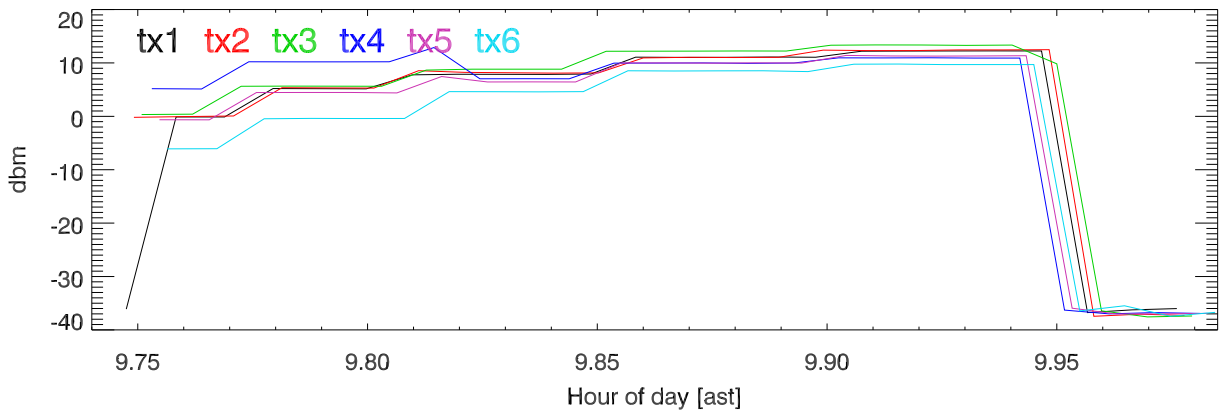
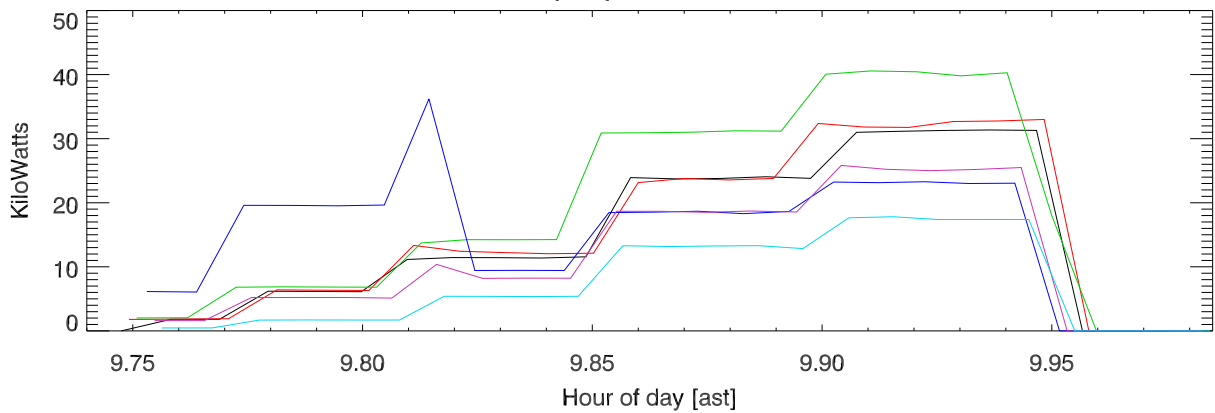


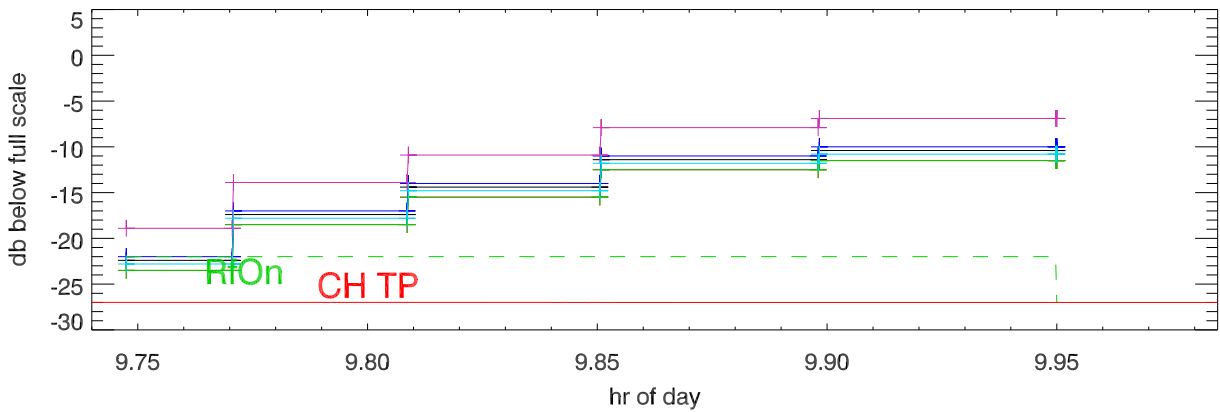
161014 5 MHz Band tx power. rf coupler output. 5MHz,mesh -15 ft



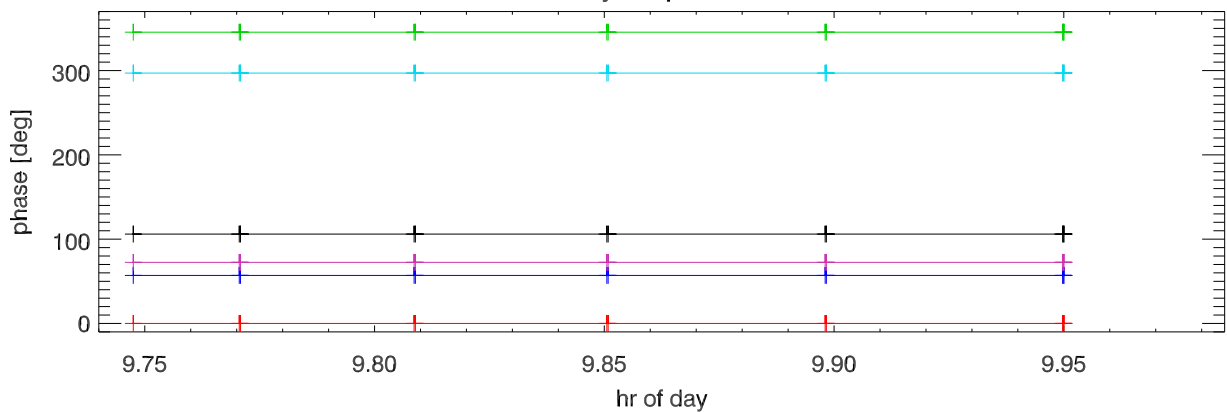
Output power in KWatt



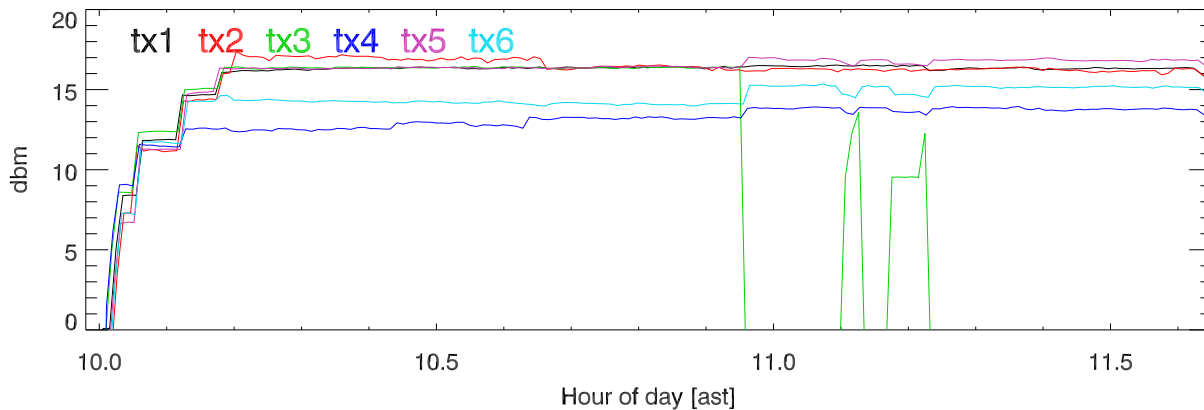
synth drive amplitude.



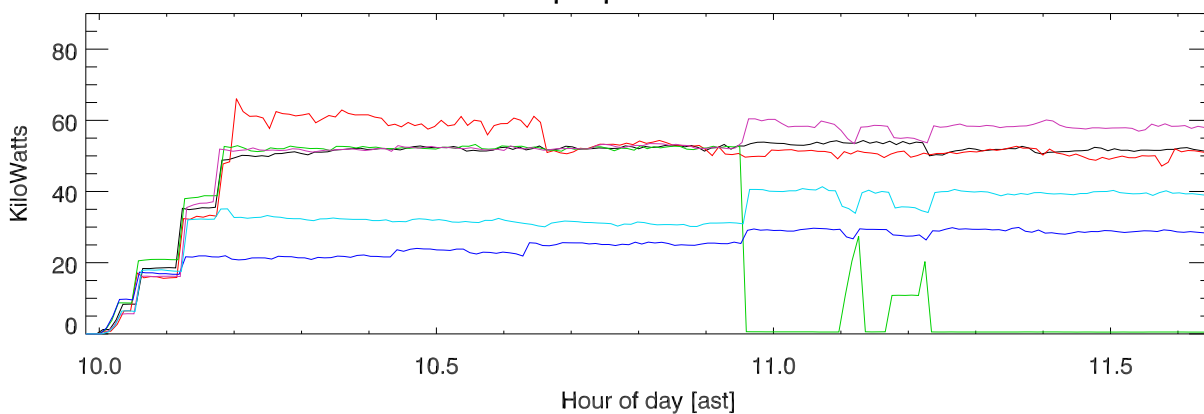
synth phase



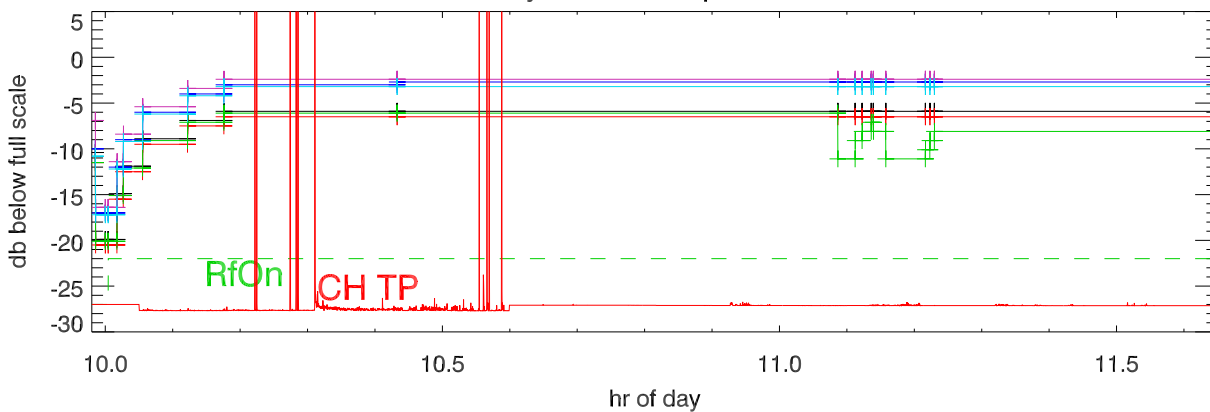
161014 8 Mhz Band tx power. rf coupler output. 8MHz,mesh -15 ft



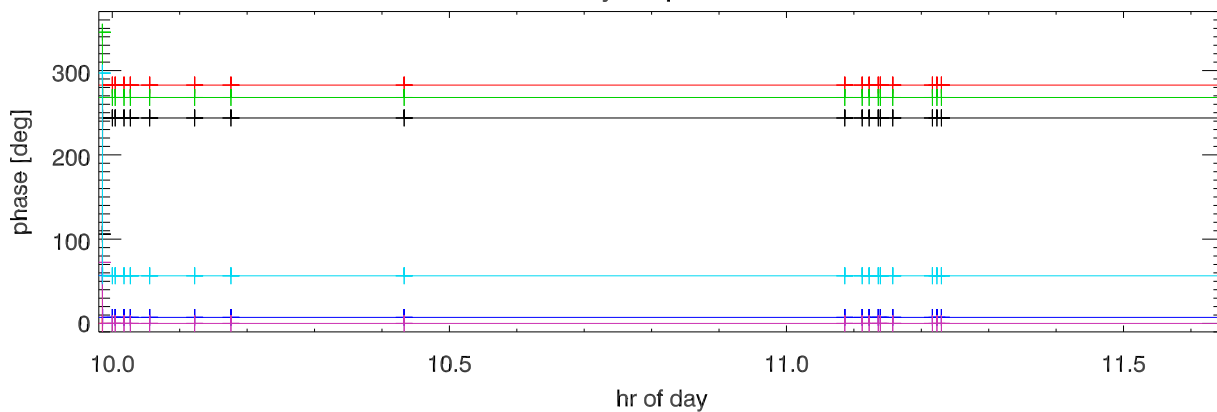
Output power in KWatt



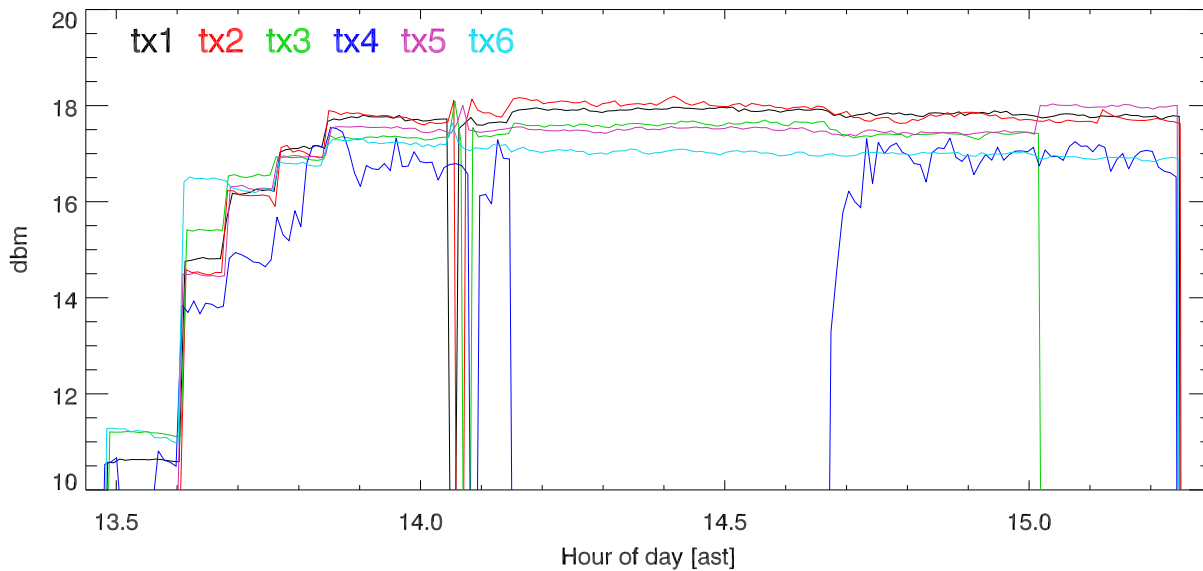
synth drive amplitude.



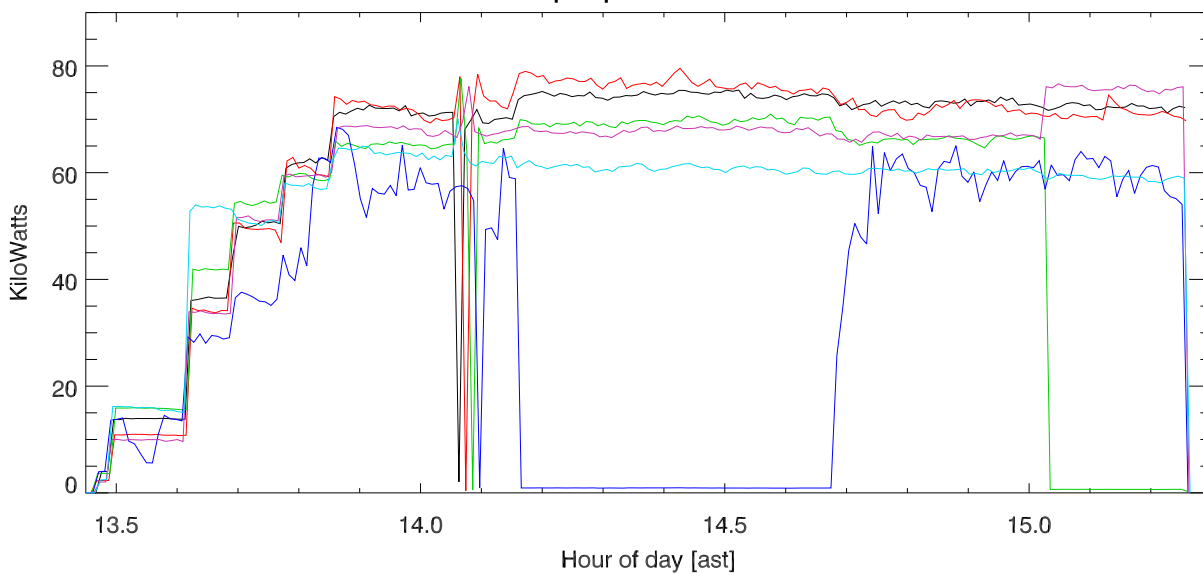
synth phase



161014 8 Mhz Band tx power. rf coupler output. 8MHz,mesh -15 ft



Output power in KWatt



synth drive amplitude.

