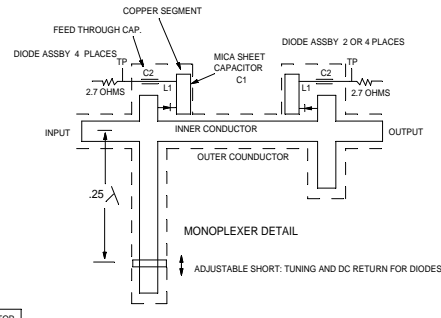


VOLTAGE DROPS IN PROTECT STATE: 5 AMP/DIODE

	6 DIODES	8 DIODES
PIN DROP	1.0	1.0
2.7 OHM DROP	1.35	1.35
MBR1045 DROP	.40	.50
IRF537 DROP	.39	.52
.2 OHM DROP	.60	.80
TOTAL	3.74	4.67



MONOPLER DRIVER
 jbh 01-19-01 file: 430_mxdrc.ECW

MONOPLER DRIVER page 1 of 2
 jbh 01-19-01 file: 430_mxdrc.ECW rev 8-14-02
 REV. 6 NOV 2002

