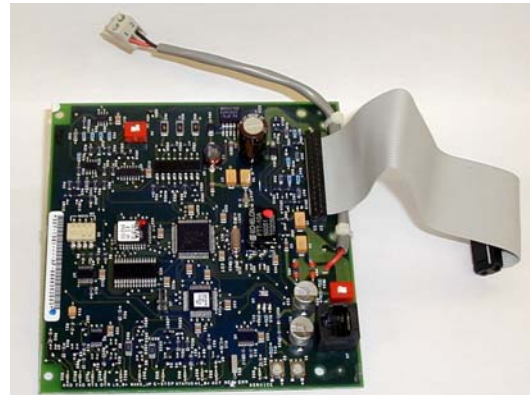


PowerCommand® Network GenSet Communications Module (GCM) for PCC3100 Controls (FT-10)



Description

The GenSet Communications Module (GCM) provides an interface for a PowerCommand GenSet to the PowerCommand Network. The GCM is easily installed inside the generator control box without additional wiring, conduit or external enclosures.

The GCM allows local or remote monitoring and control of the PowerCommand GenSet. The GCM allows a user to start, stop, emergency stop or reset a fault of the genset. The GCM may be configured for automatic alarm dial-out of genset fault conditions.

Features

- Simple real-time access to all necessary PowerCommand GenSet data.
- Automatic dial-out of all GenSet warning and shutdown conditions to a user-defined location.
- May be connected at any point in the PowerCommand Network.
- Module firmware can be upgraded in the field. May be remotely monitored and controlled with PowerCommand Software for Windows® V2.0.
- Plugs easily into genset control requiring no additional wiring, conduit or external enclosures.
- Less wiring makes installation and system upgrades quick and easy.

Specifications

<p>Network Echelon® LONWORKS®, FT-10 Cable: UTP NEMA 4 or CAT 5 (stranded)</p>	<p>Power Provided by PowerCommand Generator Control</p> <p>Temperature Operating -25 to +70 °C (-13 to +158 °F) Storage -25 to +80 °C (-13 to +176 °F)</p> <p>Humidity Relative 25 - 90% (non-condensing)</p>
---	---

Monitoring Information Available

Generator	Engine	Status
Voltage (3-Phase) Current (3-Phase) Percent Current Percent Load Power Factor Frequency Real Power Energy	Engine Speed Engine Temperature (L & R) Exhaust Temperature (L & R) Oil Pressure Oil Temperature Battery Voltage Run Time	Switch Position GenSet Status Number of Starts Model Rating Fault Status

Annunciation Available*

NFPA 110	AC Alarms	Paralleling
High Battery Voltage Low Battery Voltage Genset Running Pre-Low Oil Pressure Low Oil Pressure Pre-High Engine Temp High Engine Temp Low Engine Temp Overspeed Fail to Start Not in Automatic Low Fuel Low Coolant Level Common Alarm	Customer Fault 2 Customer Fault 4 High AC Voltage Low AC Voltage Under Frequency Overcurrent Short Circuit Reverse Power Loss of Field Loss of AC Input Fail to Synchronize Fail to Close Overload Emergency Stop Communications Failure Common Alarm	Emergency Stop Pre-Low Oil Pressure Low Oil Pressure Pre-High Engine Temp High Engine Temp Low Engine Temp Overspeed Fail to Start Not in Automatic Low Coolant Level Fail to Synchronize Fail to Close Reverse Power Loss of Field Overload Under Frequency

* Variations are not available.

Ordering Information

Model	Description
0541-0813	GenSet Communications Module (KP60-2)

See your distributor for more information



Cummins Power Generation
1400 73rd Avenue N.E.
Minneapolis, MN 55432
763.574.5000
Fax: 763.574.5298
www.cumminspower.com

Cummins Power Generation is a subsidiary of Cummins Inc.
PowerCommand is a registered trademark of Cummins Inc.
Echelon and LONWORKS are registered trademarks of Echelon.
Windows is a registered trademark of Microsoft.

WARNING For Professional Use Only. Must be installed by a qualified service technician. Improper installation presents hazards of electrical shock and improper operation, resulting in severe personal injury and/or property damage.

WARNING Back feed to a utility system can cause electrocution and/or property damage. Do not connect generator sets to any building electrical system except through an approved device or after building main switch is open.