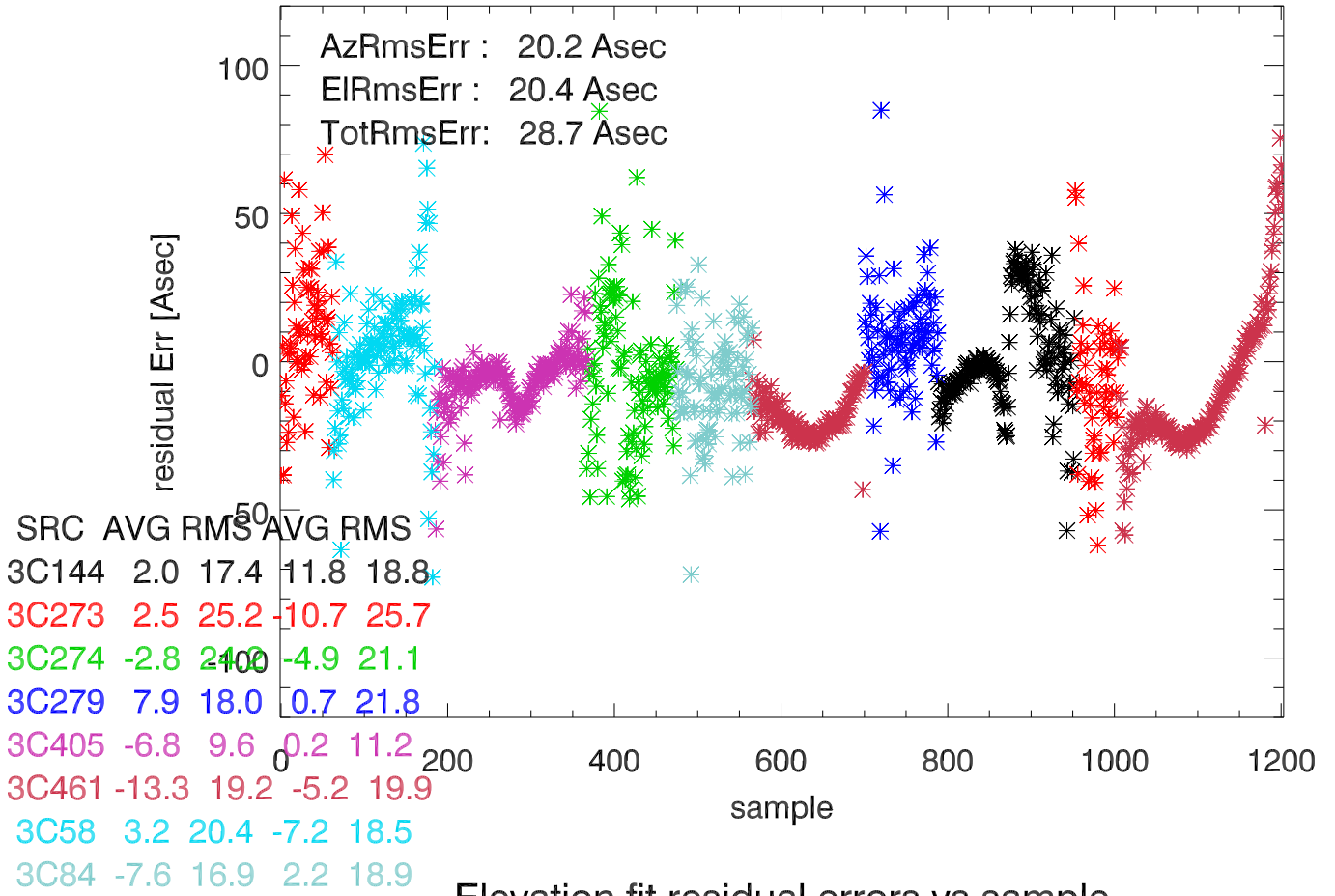
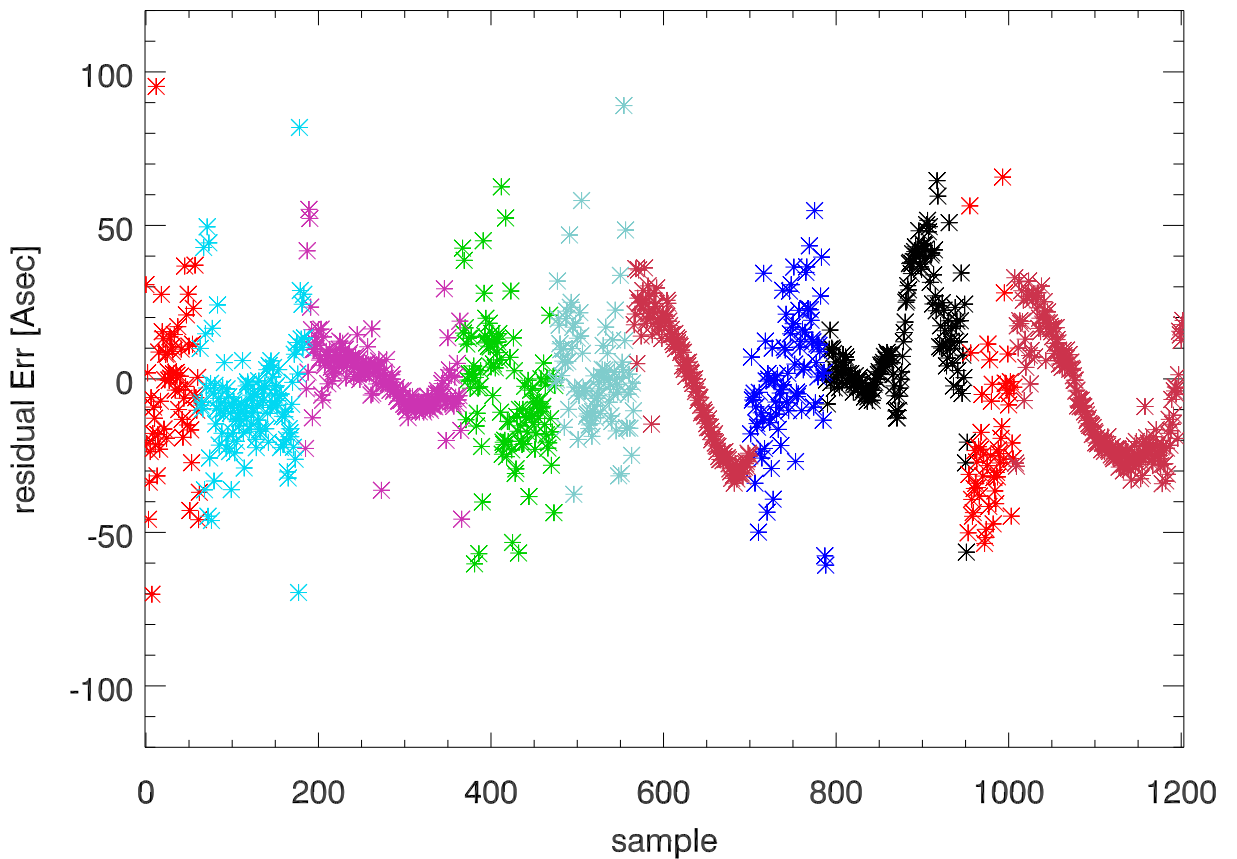


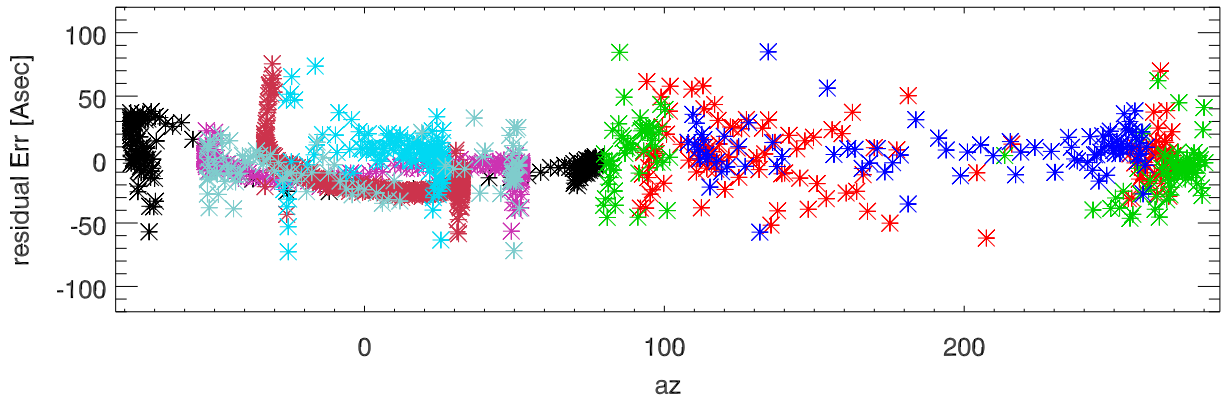
model4A azimuth fit residual errors vs sample



Elevation fit residual errors vs sample

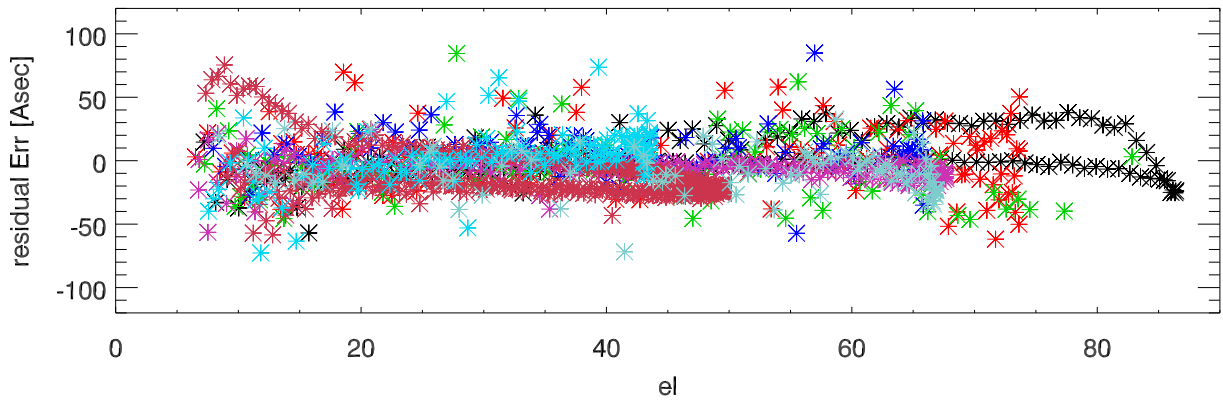


model4A azimuth fit residual errors vs az

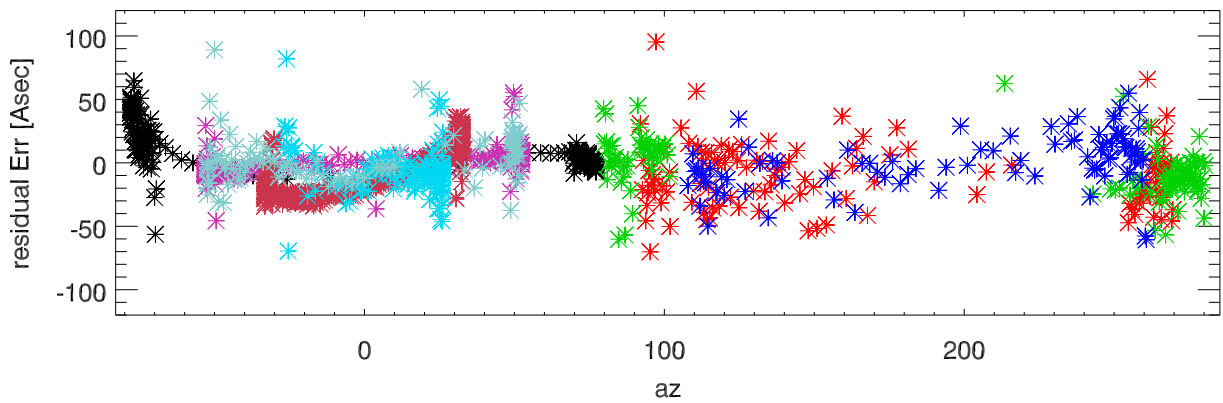


azimuth fit residual errors vs el

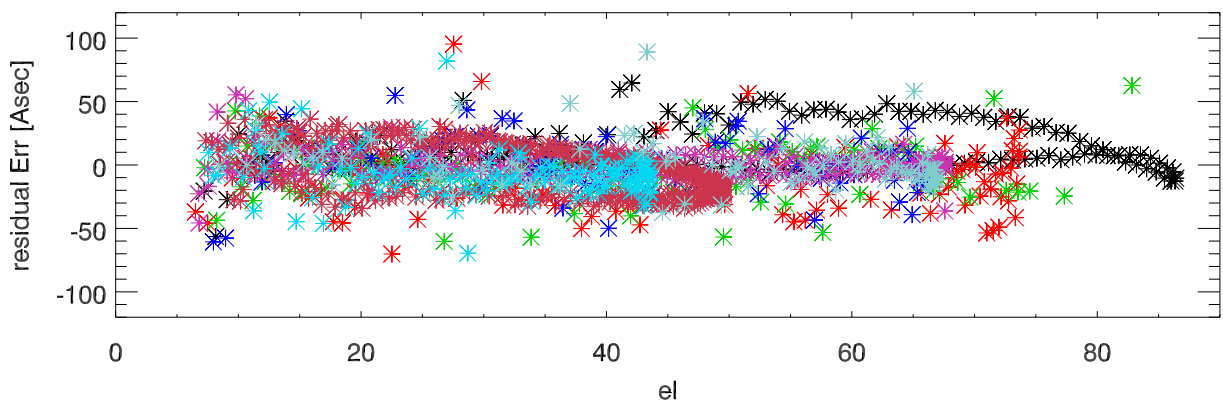
- 3C144
- 3C273
- 3C274
- 3C279
- 3C405
- 3C461
- 3C58
- 3C84

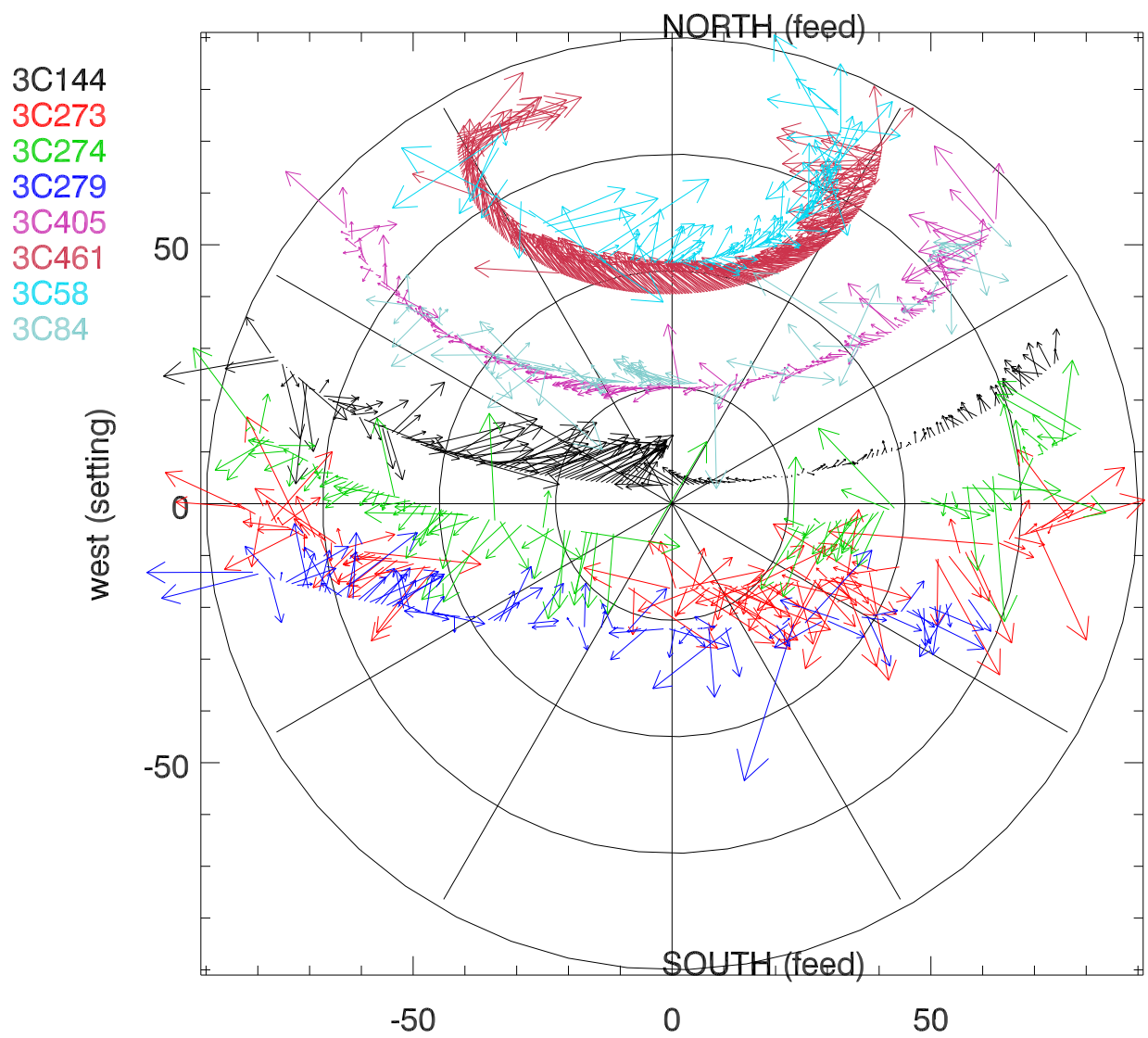


Elevation fit residual errors vs az



Elevation fit residual errors vs el





model4A pointing residuals vs az,za
 1 div=30.00Asecs
 errors each 22.5deg

za	max	avg	rms
all	95.4	24.5	15.5
22	66.4	28.8	18.1
45	95.3	23.4	14.6
67	95.4	22.7	14.7
90	77.6	28.1	16.7

Fri Sep 17 07:32:50 2021

$$dx_{EI} = P1 + P2\cos(\text{el}) + P3\sin(\text{el}) + P4\sin(\text{El})\cos(\text{Az}) + P5\sin(\text{el})\sin(\text{az})$$
$$dEI = -P4\sin(\text{az}) + P5\cos(\text{az}) + P7 + P8\cos(\text{el}) + P9\cot(\text{el})$$

npnts:1203 rmsfit:Az,El,total: 19.61 20.56 20.18

azF:	p1	p2	p3	p4	p5			
	68.84	-1461.28	-11.90	-22.72	8.04			
elF:	p4	p5	p7	p8	p9			
	-12.53	11.01	300.42	46.12	22.21			
all:	p1	p2	p3	p4	p5	p7	p8	p9
	74.79	-1464.40	-16.77	-10.16	12.73	300.01	52.39	20.37

1azTilt: direction Amp
az: 70.50517 24.10659
el: 48.70405 16.68313
Avg: 61.61191 20.03917
all: 38.58640 16.28225

p4,p5 avg: -17.62941 9.52745
p4,p5 All: -10.15514 12.72732

Residuals: azMean azRms elMean elRms
all : -4.12 20.18 -1.78 20.41
az,el : -1.37 19.61 0.63 20.56

model results in Asec

	FitAll	azEIFits
p1	74.79	68.84
p2	-1464.40	-1461.28
p3	-16.77	-11.90
p4	-10.16	-17.63
p5	12.73	9.53
p6	notused	
p7	300.01	300.42
p8	52.39	46.12
p9	20.37	22.21