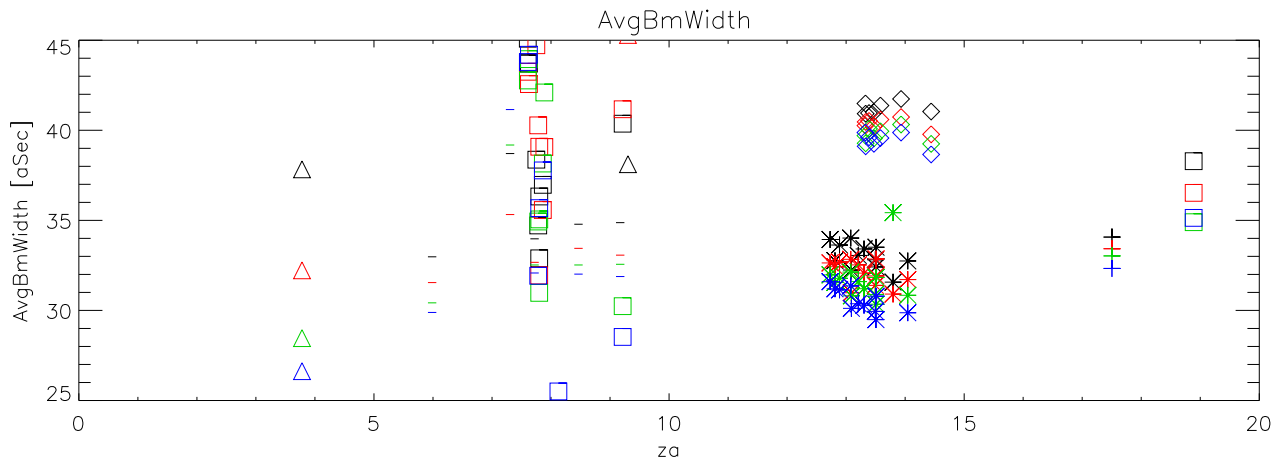
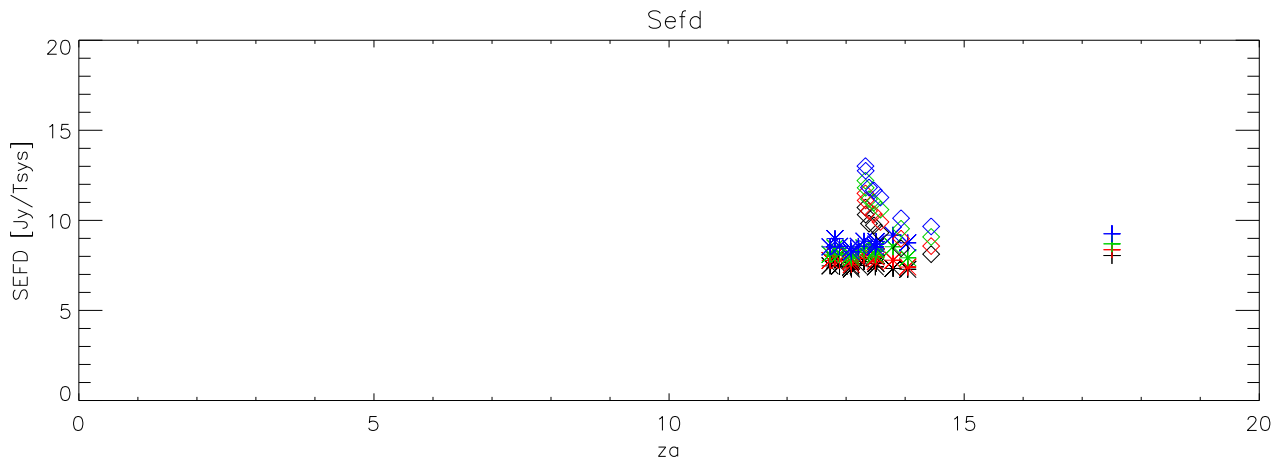
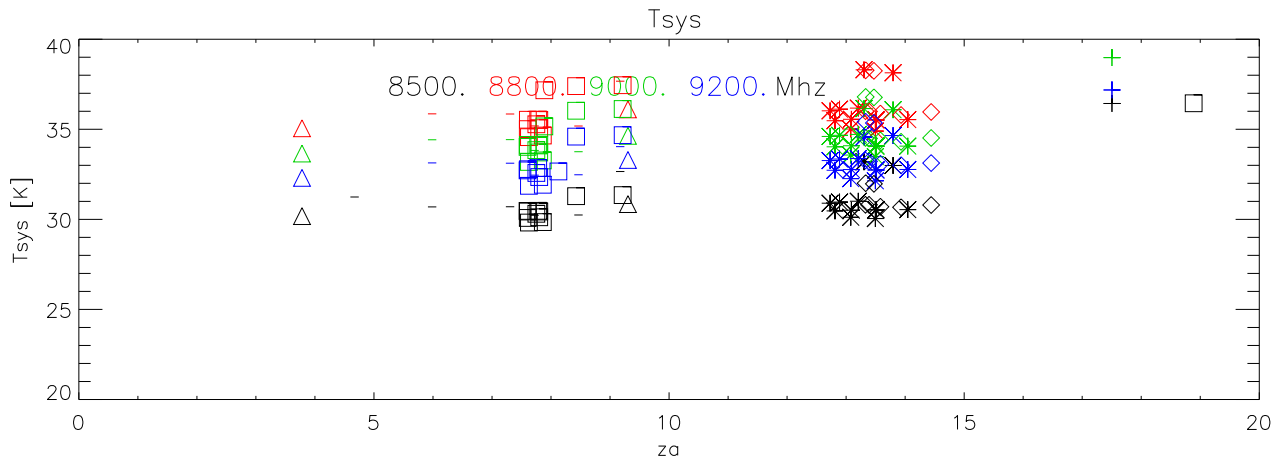
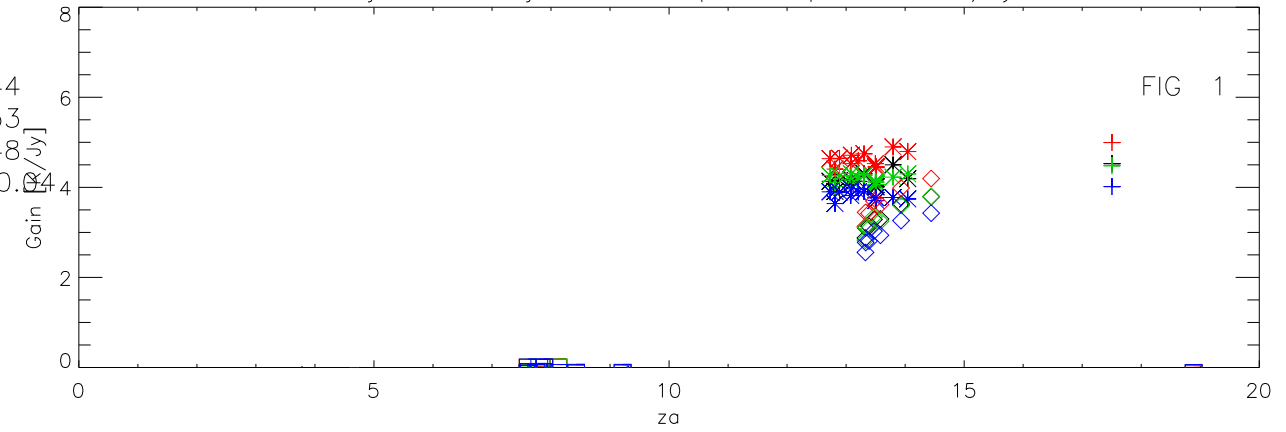


01jan09 to 31jan09 all freq 168 pnts. Gain K/Jy

- + B0109+144
- \* B0320+053
- ◇ B0340+048
- △ G192.58-0.044
- J320
- J900

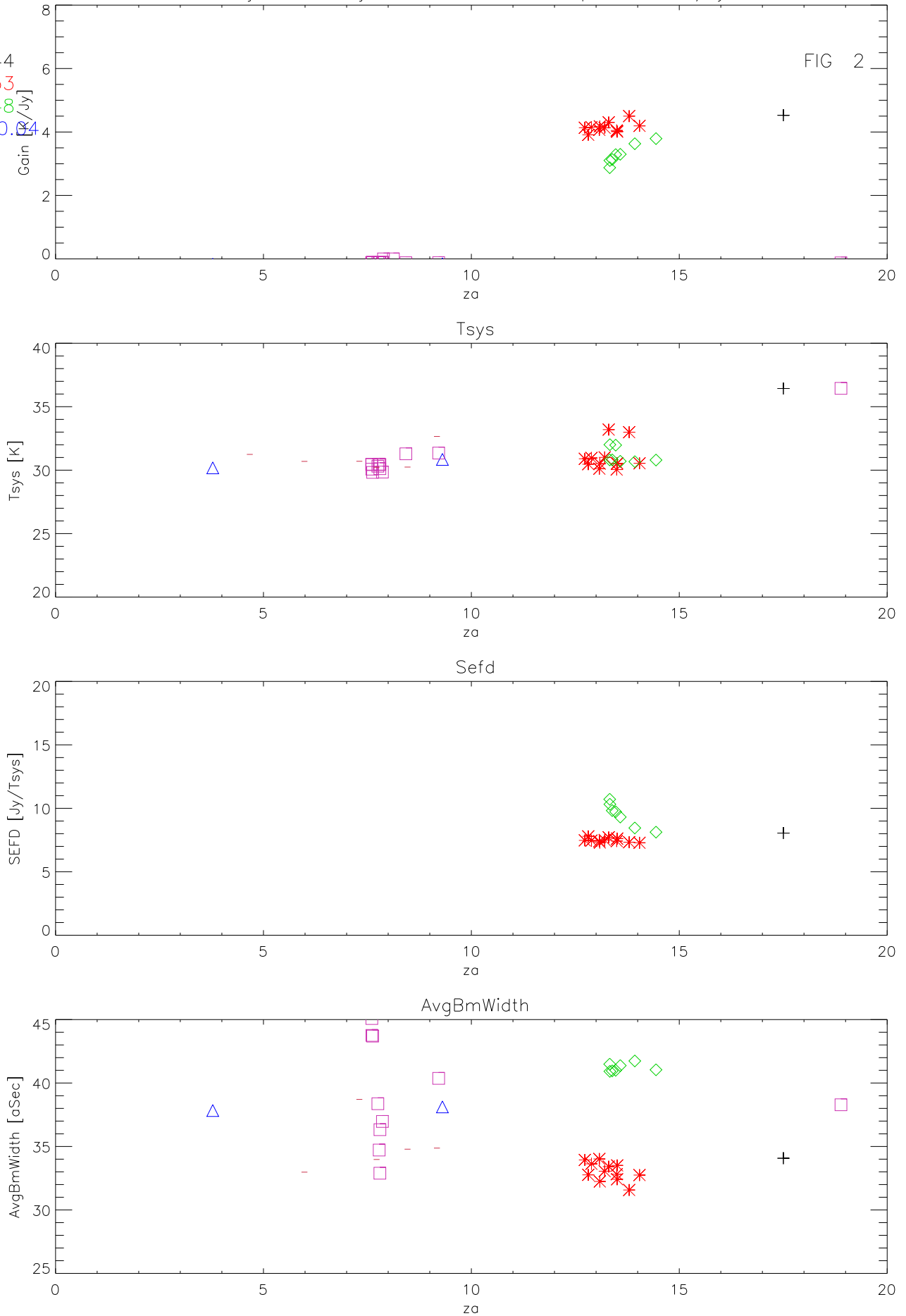
FIG 1



01jan09 to 31jan09 8500 Mhz 42 pnts. Gain K/Jy

FIG 2

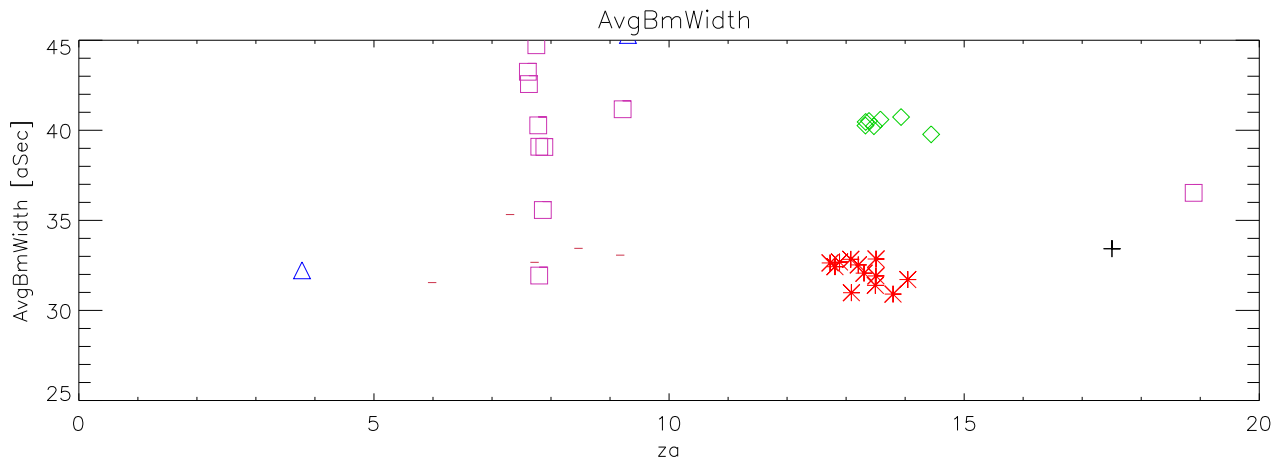
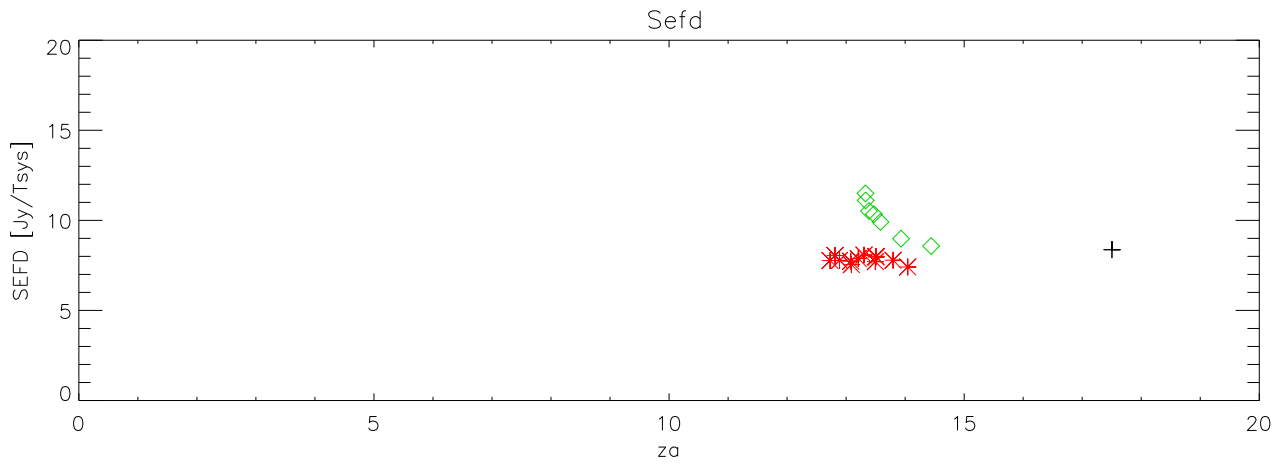
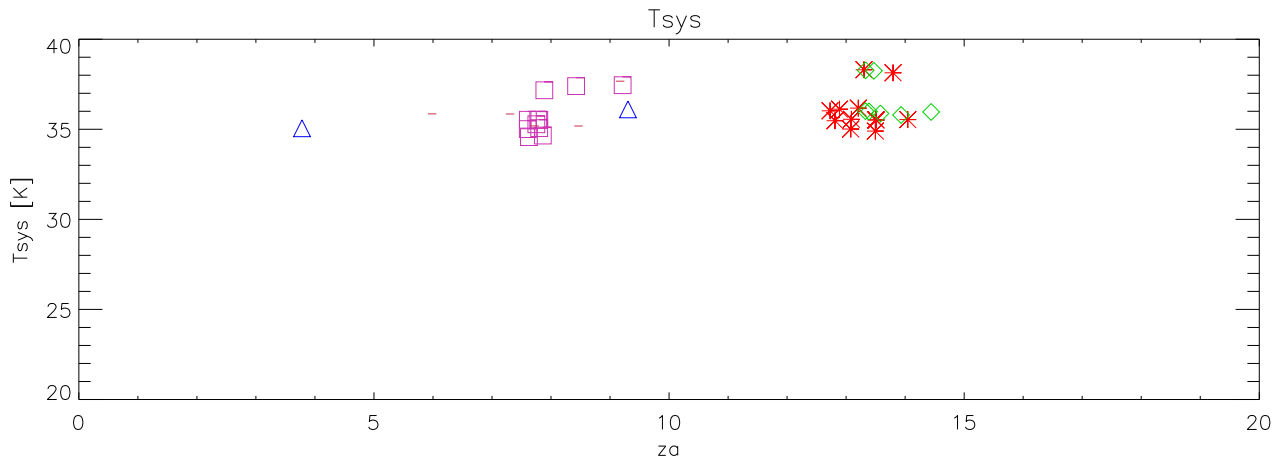
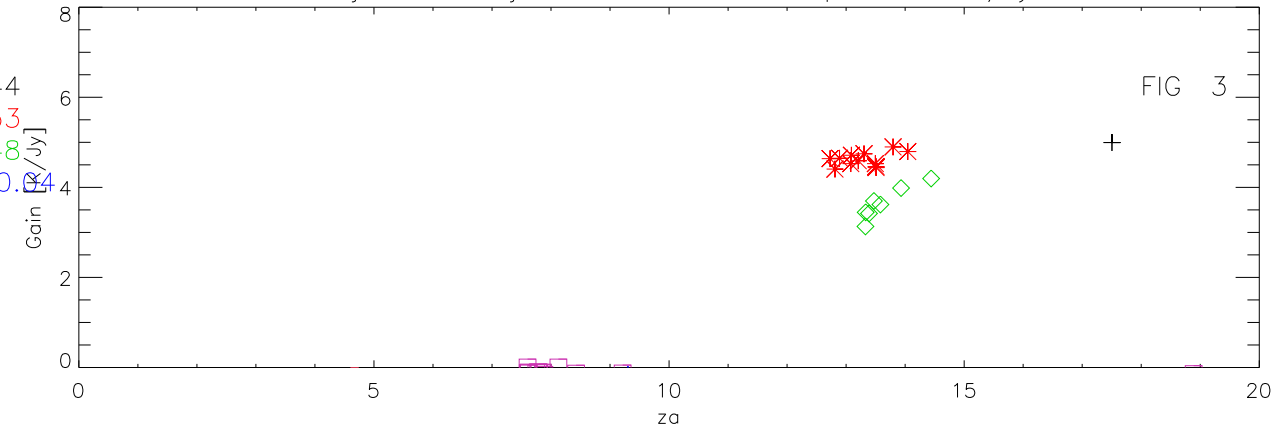
- + B0109+144
- \* B0320+053
- ◇ B0340+048
- △ G192.58-0.04
- J320
- J900



01jan09 to 31jan09 8800 Mhz 42 pnts. Gain K/Jy

FIG 3

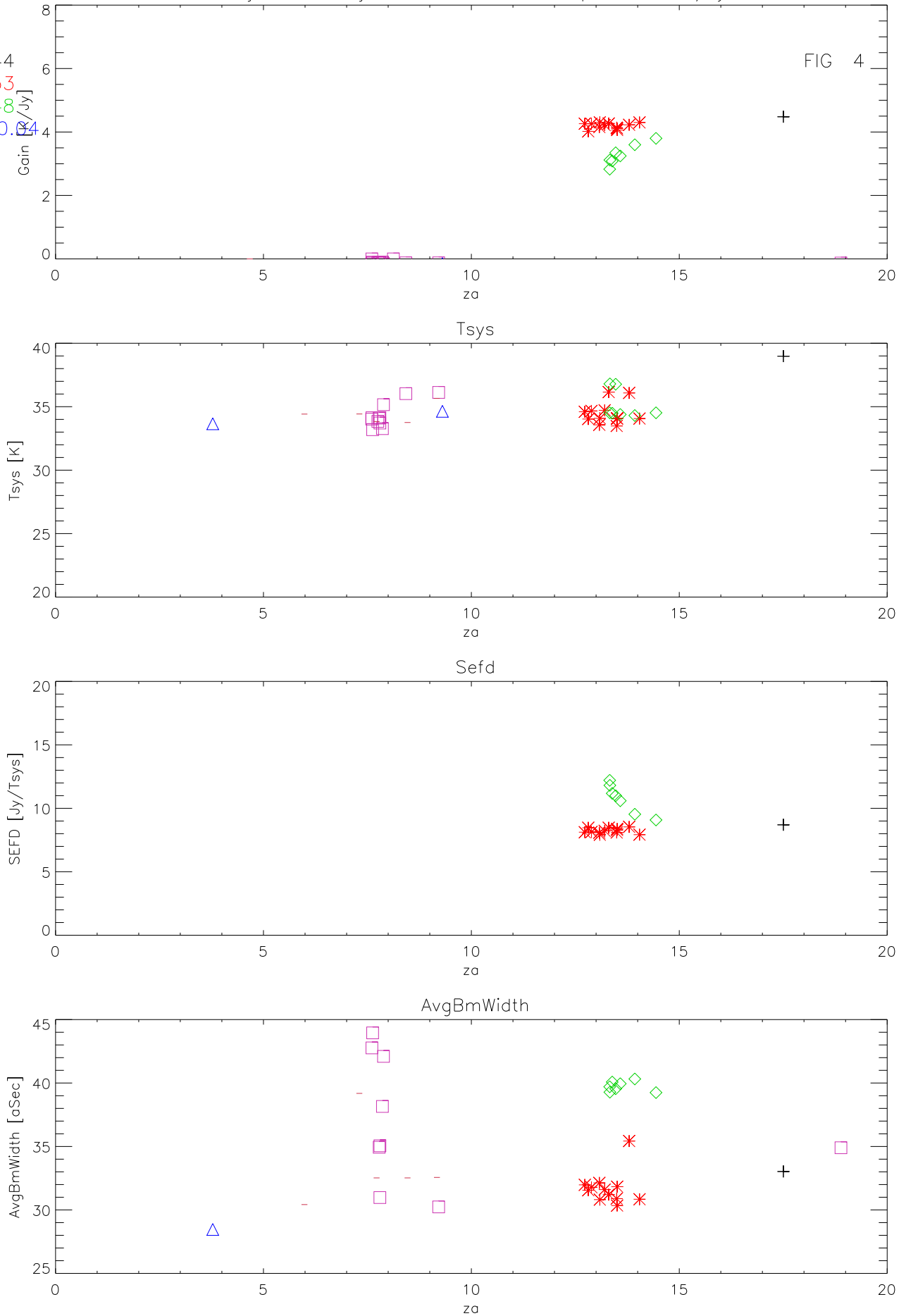
- + B0109+144
- \* B0320+053
- ◇ B0340+048
- △ G192.58-0.04
- J320
- J900



01jan09 to 31jan09 9000 Mhz 42 pnts. Gain K/Jy

FIG 4

- + B0109+144
- \* B0320+053
- ◇ B0340+048
- △ G192.58-0.04
- J320
- J900



01jan09 to 31jan09 9200 Mhz 42 pnts. Gain K/Jy

FIG 5

- + B0109+144
- \* B0320+053
- ◇ B0340+048
- △ G192.58-0.04
- J320
- J900

