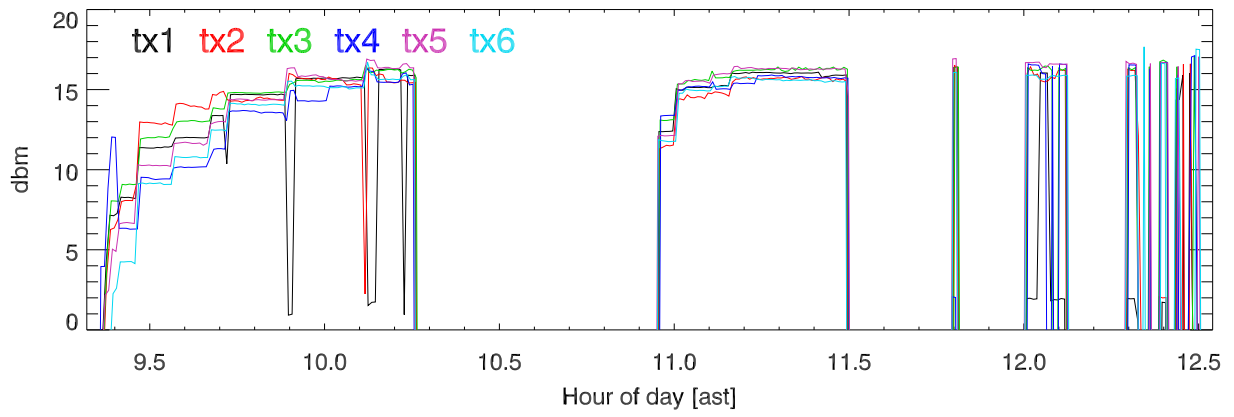
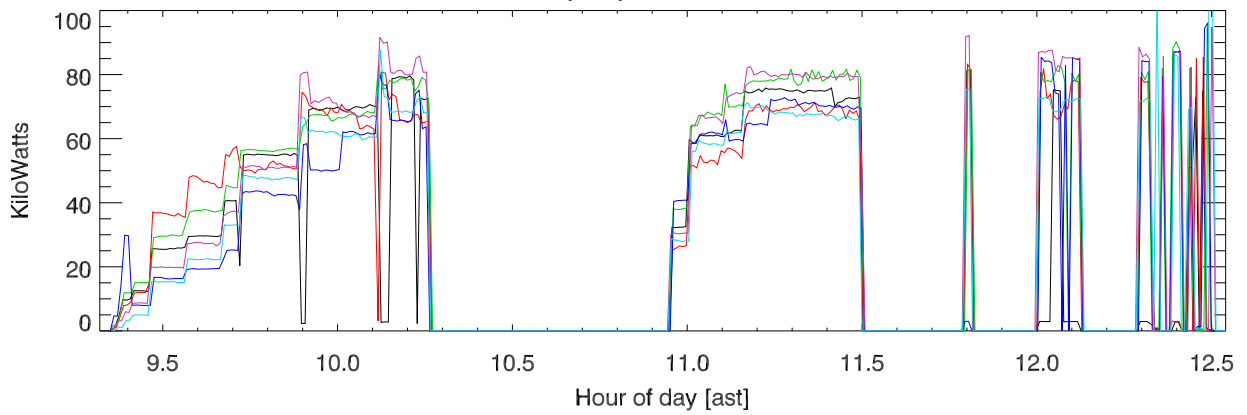


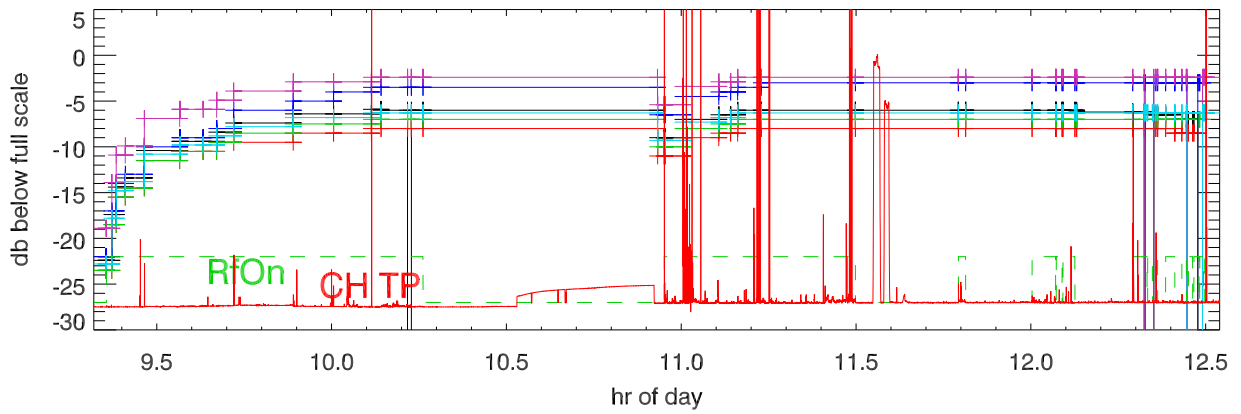
161018 5 MHz Band tx power. rf coupler output. 5MHz (morning)



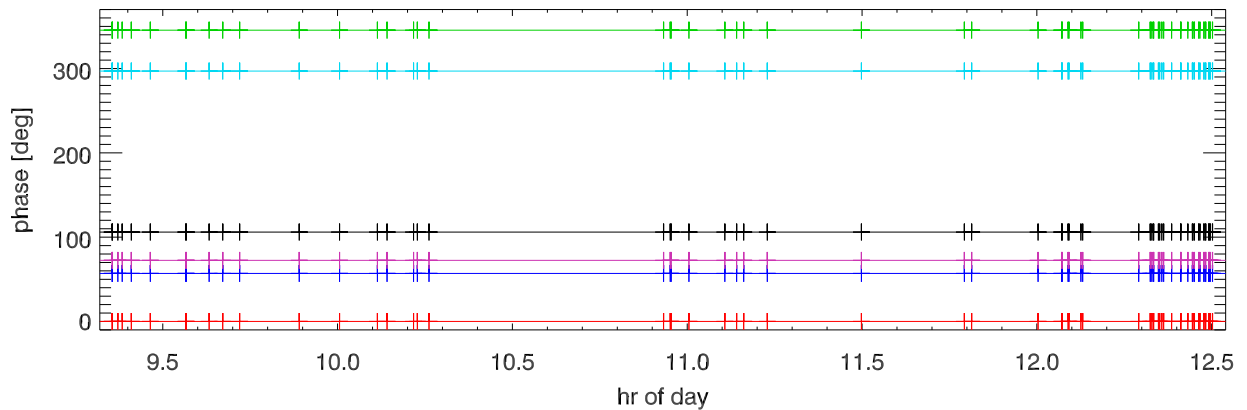
Output power in KWatt



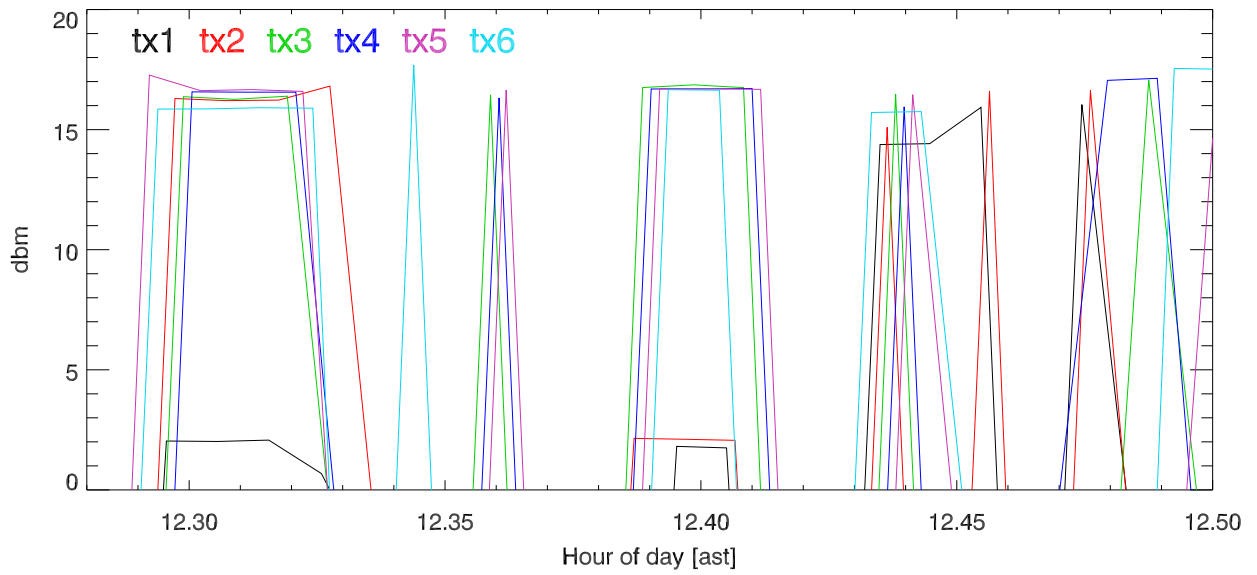
synth drive amplitude.



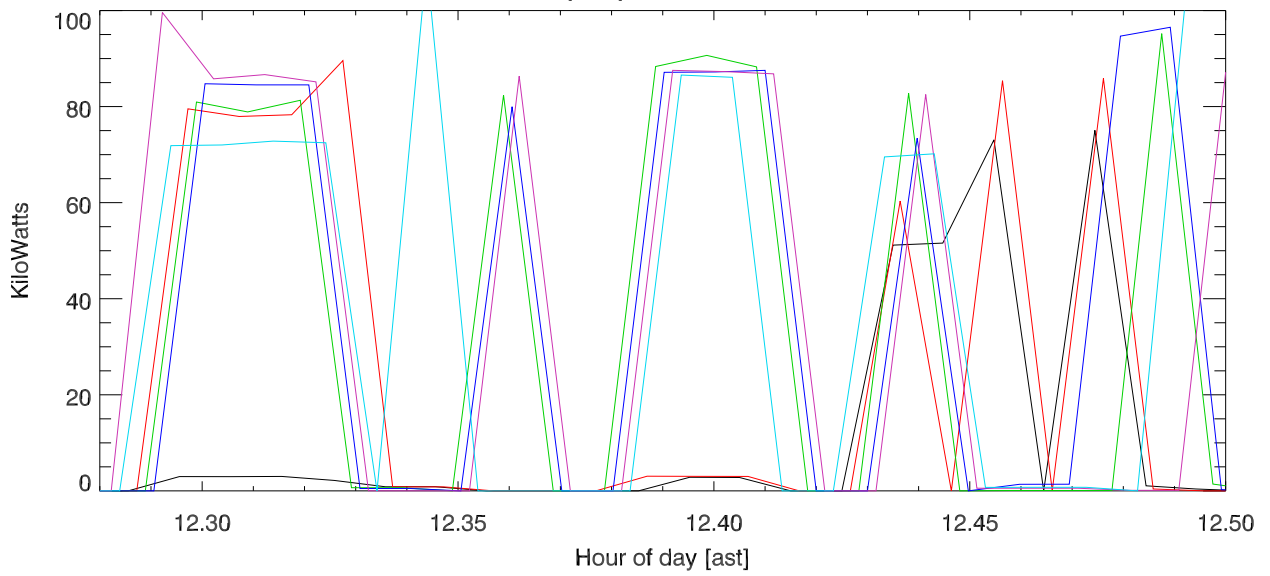
synth phase



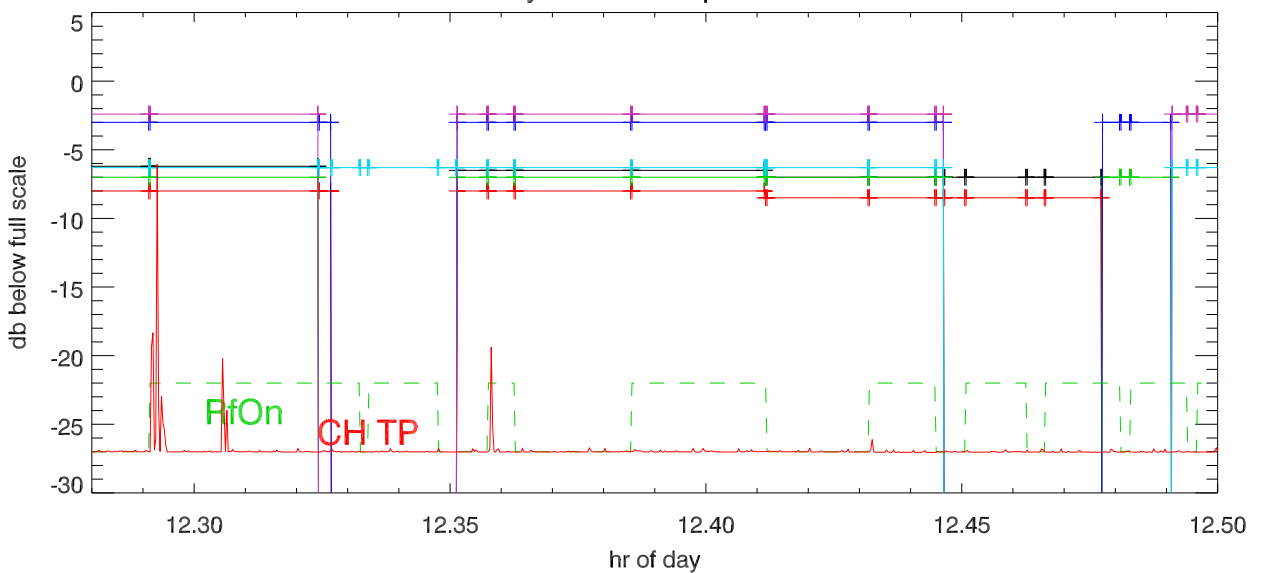
161018 5 MHz Band tx power. rf coupler output. Rogowski coil measurements



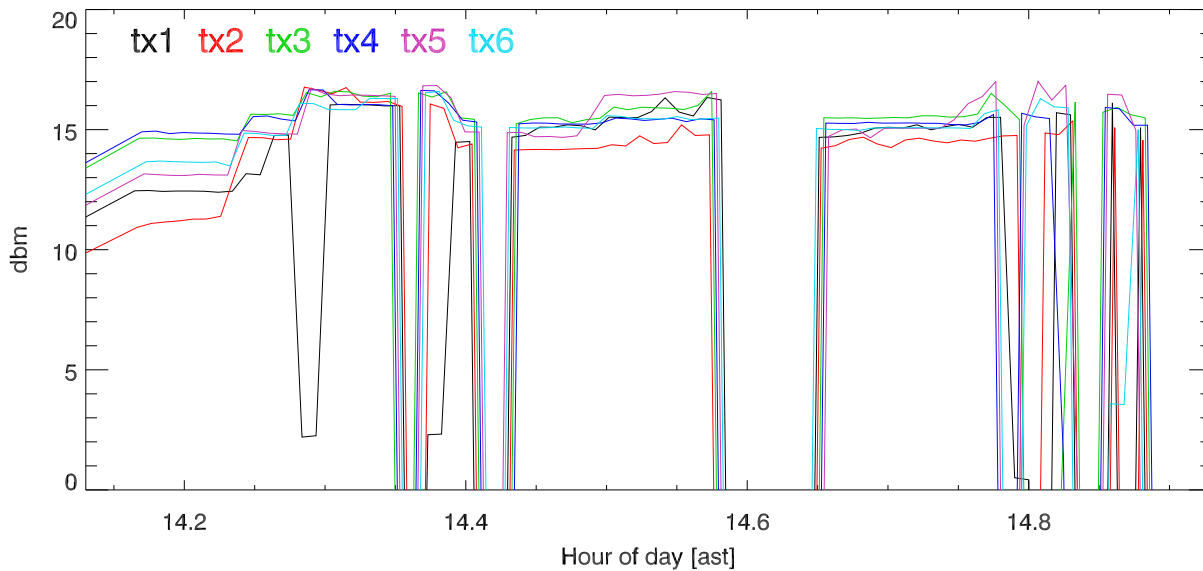
Output power in KWatt



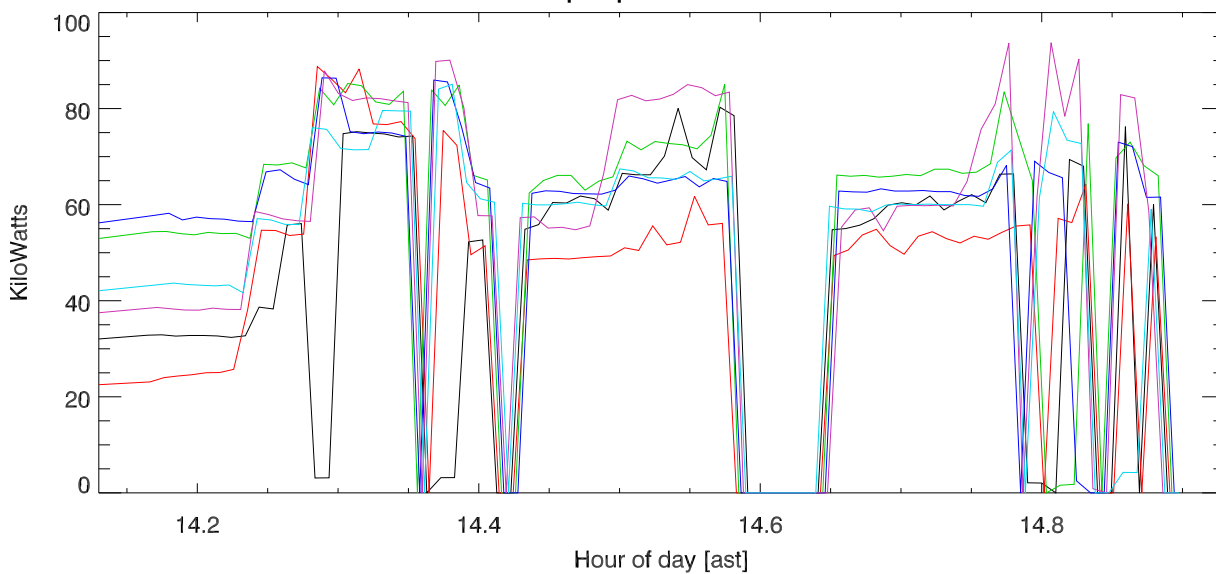
synth drive amplitude.



161018 5 MHz Band tx power. rf coupler output. 5MHz, (afternoon. peak hold)



Output power in KWatt



synth drive amplitude.

